

Datasheet for ABIN2776451
anti-CITED2 antibody (N-Term)[Go to Product page](#)

1 Validation

2 Images

Overview

Quantity:	100 µL
Target:	CITED2
Binding Specificity:	N-Term
Reactivity:	Human, Mouse, Rat, Cow, Dog, Guinea Pig, Sheep
Host:	Rabbit
Clonality:	Polyclonal
Conjugate:	This CITED2 antibody is un-conjugated
Application:	Western Blotting (WB), Immunohistochemistry (IHC)

Product Details

Immunogen:	The immunogen is a synthetic peptide directed towards the N terminal region of human CITED2
Sequence:	HHYAGAGNMN ATSGIRHAMG PGTVNGGHPP SALAPAAARN NSQFMGPPVA
Predicted Reactivity:	Cow: 100%, Dog: 100%, Guinea Pig: 100%, Human: 100%, Mouse: 100%, Rat: 100%, Sheep: 100%
Characteristics:	This is a rabbit polyclonal antibody against CITED2. It was validated on Western Blot using a cell lysate as a positive control.
Purification:	Affinity Purified

Target Details

Target:	CITED2
Alternative Name:	CITED2 (CITED2 Products)

Target Details

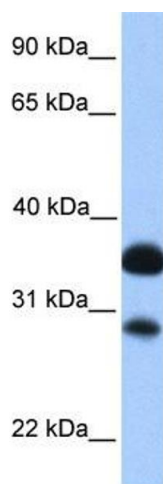
Background:	<p>CITED2 belongs to the CITED family. It interferes with the binding of transcription factors HIF-1a and STAT2 to p300/CBP.</p> <p>Alias Symbols: MRG1, P35SRJ, ASD8, VSD2</p> <p>Protein Interaction Partner: UBC, ELAVL1, EP300, SMAD3, SMAD2, LHX2, HIF1A, TFAP2C, LHX3, CREBBP, TFAP2A, TBP, TFAP2B,</p> <p>Protein Size: 270</p>
Molecular Weight:	28 kDa
Gene ID:	10370
NCBI Accession:	NM_006079 , NP_006070
UniProt:	Q99967
Pathways:	Tube Formation

Application Details

Application Notes:	Optimal working dilutions should be determined experimentally by the investigator.
Comment:	Antigen size: 270 AA
Restrictions:	For Research Use only

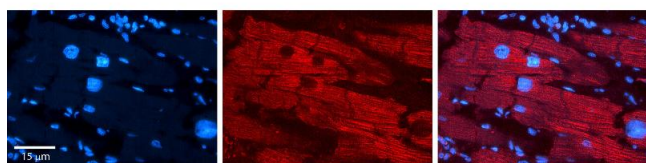
Handling

Format:	Liquid
Concentration:	Lot specific
Buffer:	Liquid. Purified antibody supplied in 1x PBS buffer with 0.09 % (w/v) sodium azide and 2 % sucrose.
Preservative:	Sodium azide
Precaution of Use:	This product contains Sodium azide: a POISONOUS AND HAZARDOUS SUBSTANCE which should be handled by trained staff only.
Handling Advice:	Avoid repeated freeze-thaw cycles.
Storage:	-20 °C
Storage Comment:	For short term use, store at 2-8°C up to 1 week. For long term storage, store at -20°C in small aliquots to prevent freeze-thaw cycles.



Western Blotting

Image 1. WB Suggested Anti-CITED2 Antibody Titration: 0.2-1 ug/ml Positive Control: Human brain



Immunohistochemistry

Image 2. Rabbit Anti-CITED2 Antibody Formalin Fixed Paraffin Embedded Tissue: Human heart Tissue Observed Staining: Cytoplasmic Primary Antibody Concentration: 1:100 Other Working Concentrations: N/A Secondary Antibody: Donkey anti-Rabbit-Cy3 Secondary Antibody Concentration: 1:200 Magnification: 20X Exposure Time: 0.5 - 2.0 sec



Successfully validated (Western Blotting (WB))

by [Dr. Pengpeng Bi Lab](#), Department of Genetics, Franklin College of Arts and Sciences,
University of Georgia

Report Number: 104256

Date: Feb 10 2020

Target:	CITED2
Lot Number:	QC11500
Method validated:	Western Blotting (WB)
Positive Control:	HEK293 cells overexpressing murine Cited2 (NCBI protein ID: NP_034958, 269 amino acids) from a transiently transfected expression plasmid
Negative Control:	Transient transfection with empty vector
Notes:	Passed. ABIN2776451 specifically recognizes Cited2 in human HEK293 cell lysates.
Primary Antibody:	ABIN2776451
Secondary Antibody:	Goat anti-Rabbit IgG (H+L), Superclonal Recombinant Secondary Antibody, HRP (Invitrogen, A27036, lot 20310171)
Protocol:	<ul style="list-style-type: none"> • Grow human HEK293 cells (Cell Biolabs, RV-101) in DMEM medium(Sigma, D5796) supplemented with FBS (Gemini, A59G00J) and Pen Strep (Gibco, 15140-122, lot 1999384), at 37°C and 5% CO₂ in 2mL medium on a 6 well plate to 80% confluency. • Transfect cells with 2µg per well pMXs-Puro murine Cited2 expression plasmid using PEI (Polysciences, 23966-1) following the manufacturer's instructions. • Lyse 1x10⁶ cells in 100µl per well cold RIPA (Sigma, R0278). • Determine total protein content of the lysates using Pierce BCA Protein Assay Kit (Thermo Fisher, 23225). • Mix 40 µg of total protein with in 10 µL 4x Laemmli Sample Buffer (Biorad, 1610747) and subsequently separate them on a denaturing 12% PAGE gel (Biorad, 1610156) in a Biorad electrophoresis chamber for 1h at 100V. • Transfer proteins onto Immobilon-PSQ PVDF Membrane (Sigma, ISEQ00010, lot R8CA8256B) with a Western blotting system for 1h at 110V. • Block the membrane with blocking buffer (5% non-fat milk in TBST) for 1h at RT. • Incubation with primary rabbit anti-CITED2 antibody (antibodies-online, ABIN2776451, lot QC11500) diluted 1:200 in blocking buffer ON at 4°C. • Wash membrane 3x for 15min with TBST. • Incubation with Goat anti-Rabbit IgG (H+L), Superclonal Recombinant Secondary Antibody, HRP (Invitrogen, A27036, lot 20310171) diluted 1:2000 in blocking buffer for 1h at RT. • Wash membrane 5x for 15min with TBST.

Validation report #104256 for Western Blotting (WB)

- Reveal protein bands using SuperSignal West Dura (Thermo Scientific, 34075, TG268239) on a UVP ChemStudio touch (Analytik Jena, 84997092802).

Experimental Notes: The CITED2 antibody ABIN2776451 reveals a protein of the expected molecular weight of the antigen in lysates of human HEK293 cells expressing murine Cited2. The protein band is only visible in the positive but not the negative controls.

Image for Validation report #104256



Validation image no. 1 for anti-Cbp/p300-Interacting Transactivator, with Glu/Asp-Rich Carboxy-terminal Domain, 2 (CITED2) (N-Term) antibody (ABIN2776451)

Western blot analysis using ABIN2776451 of cell lysates from HEK293 cells transfected with an empty vector (EV) or a murine Cited2 expression plasmid (mCited2).