

Datasheet for ABIN2776452  
**anti-POLR2I antibody (N-Term)**[Go to Product page](#)

## 1 Image

## Overview

Quantity:	100 µL
Target:	POLR2I
Binding Specificity:	N-Term
Reactivity:	Human, Mouse, Rat, Dog, Rabbit, Cow, Guinea Pig, Horse, Zebrafish (Danio rerio), Saccharomyces cerevisiae
Host:	Rabbit
Clonality:	Polyclonal
Conjugate:	This POLR2I antibody is un-conjugated
Application:	Western Blotting (WB)

## Product Details

Immunogen:	The immunogen is a synthetic peptide directed towards the N terminal region of human POLR2I
Sequence:	ACRNCDYQQE ADNSCIYVNK ITHEVDELTQ IIADVSQDPT LPRTEDHPCQ
Predicted Reactivity:	Cow: 100%, Dog: 100%, Guinea Pig: 100%, Horse: 100%, Human: 100%, Mouse: 100%, Rabbit: 100%, Rat: 100%, Yeast: 83%, Zebrafish: 93%
Characteristics:	This is a rabbit polyclonal antibody against POLR2I. It was validated on Western Blot using a cell lysate as a positive control.
Purification:	Affinity Purified

## Target Details

Target:	POLR2I
---------	--------

## Target Details

Alternative Name: POLR2I ([POLR2I Products](#))

Background: POLR2I is a subunit of RNA polymerase II, the polymerase responsible for synthesizing messenger RNA in eukaryotes. This subunit, in combination with two other polymerase subunits, forms the DNA binding domain of the polymerase, a groove in which the DNA template is transcribed into RNA. POLR2I has two zinc finger motifs with conserved cysteines and the subunit does possess zinc binding activity. Western blots using two different antibodies against two unique regions of this protein target confirm the same apparent molecular weight in our tests. This gene encodes a subunit of RNA polymerase II, the polymerase responsible for synthesizing messenger RNA in eukaryotes. This subunit, in combination with two other polymerase subunits, forms the DNA binding domain of the polymerase, a groove in which the DNA template is transcribed into RNA. The product of this gene has two zinc finger motifs with conserved cysteines and the subunit does possess zinc binding activity. Publication Note: This RefSeq record includes a subset of the publications that are available for this gene. Please see the Entrez Gene record to access additional publications.

Alias Symbols: RPB9, hRPB14.5

Protein Interaction Partner: ESR1, TCEB3, SRC, PSMB9, UBC, MED19, MED26, RECQL5, TBCD, BRCA1, CPSF6, POLR2E, POLR2D, POLR2C, POLR2B, POLR2A, DCUN1D1, CUL5, MYC, tat, WDR48, POLR2H, MED10, MED29,

Protein Size: 125

Molecular Weight: 14 kDa

Gene ID: 5438

NCBI Accession: [NM\\_006233](#), [NP\\_006224](#)

UniProt: [P36954](#)

Pathways: [Regulatory RNA Pathways](#)

## Application Details

Application Notes: Optimal working dilutions should be determined experimentally by the investigator.

Comment: Antigen size: 125 AA

Restrictions: For Research Use only

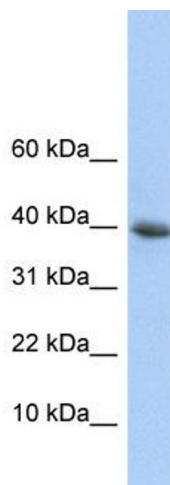
## Handling

Format: Liquid

## Handling

Concentration:	Lot specific
Buffer:	Liquid. Purified antibody supplied in 1x PBS buffer with 0.09 % (w/v) sodium azide and 2 % sucrose.
Preservative:	Sodium azide
Precaution of Use:	This product contains Sodium azide: a POISONOUS AND HAZARDOUS SUBSTANCE which should be handled by trained staff only.
Handling Advice:	Avoid repeated freeze-thaw cycles.
Storage:	-20 °C
Storage Comment:	For short term use, store at 2-8°C up to 1 week. For long term storage, store at -20°C in small aliquots to prevent freeze-thaw cycles.

## Images



### Western Blotting

**Image 1.** WB Suggested Anti-POLR2I Antibody Titration: 0.2-1 ug/ml ELISA Titer: 1:312500 Positive Control: HepG2 cell lysate POLR2I is supported by BioGPS gene expression data to be expressed in HepG2