

Datasheet for ABIN2776466  
**anti-ZNF234 antibody (Middle Region)**[Go to Product page](#)

## 1 Image

## Overview

Quantity:	100 µL
Target:	ZNF234
Binding Specificity:	Middle Region
Reactivity:	Human, Mouse, Pig, Rabbit, Cow, Rat, Dog, Guinea Pig, Horse
Host:	Rabbit
Clonality:	Polyclonal
Conjugate:	This ZNF234 antibody is un-conjugated
Application:	Western Blotting (WB)

## Product Details

Immunogen:	The immunogen is a synthetic peptide directed towards the middle region of human ZNF234
Sequence:	KGFKWSLNLD MHQRVHTGEK PYTCGECGKH FSQASSLQLH QSVHTGEKPY
Predicted Reactivity:	Cow: 86%, Dog: 100%, Guinea Pig: 79%, Horse: 100%, Human: 100%, Mouse: 86%, Pig: 100%, Rabbit: 86%, Rat: 100%
Characteristics:	This is a rabbit polyclonal antibody against ZNF234. It was validated on Western Blot using a cell lysate as a positive control.
Purification:	Affinity Purified

## Target Details

Target:	ZNF234
---------	--------

## Target Details

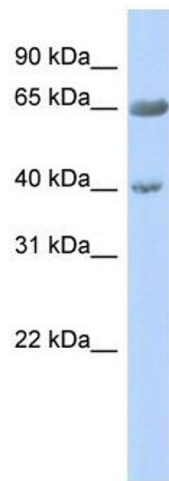
Alternative Name:	ZNF234 ( <a href="#">ZNF234 Products</a> )
Background:	ZNF234 may be involved in transcriptional regulation. Alias Symbols: HZF4, ZNF269 Protein Interaction Partner: PAN2, ELAVL1, CDC42, Protein Size: 700
Molecular Weight:	80 kDa
Gene ID:	10780
NCBI Accession:	<a href="#">NM_006630</a> , <a href="#">NP_006621</a>
UniProt:	<a href="#">Q14588</a>

## Application Details

Application Notes:	Optimal working dilutions should be determined experimentally by the investigator.
Comment:	Antigen size: 700 AA
Restrictions:	For Research Use only

## Handling

Format:	Liquid
Concentration:	Lot specific
Buffer:	Liquid. Purified antibody supplied in 1x PBS buffer with 0.09 % (w/v) sodium azide and 2 % sucrose.
Preservative:	Sodium azide
Precaution of Use:	This product contains Sodium azide: a POISONOUS AND HAZARDOUS SUBSTANCE which should be handled by trained staff only.
Handling Advice:	Avoid repeated freeze-thaw cycles.
Storage:	-20 °C
Storage Comment:	For short term use, store at 2-8°C up to 1 week. For long term storage, store at -20°C in small aliquots to prevent freeze-thaw cycles.



Western Blotting

**Image 1.** WB Suggested Anti-ZNF234 Antibody Titration:  
0.2-1 ug/ml ELISA Titer: 1:62500 Positive Control: Human  
Pancreas