



Datasheet for ABIN2776467
anti-ZNF266 antibody (N-Term)



[Go to Product page](#)

2 Images

Overview

Quantity:	100 µL
Target:	ZNF266
Binding Specificity:	N-Term
Reactivity:	Human
Host:	Rabbit
Clonality:	Polyclonal
Conjugate:	This ZNF266 antibody is un-conjugated
Application:	Western Blotting (WB), Immunohistochemistry (IHC)

Product Details

Immunogen:	The immunogen is a synthetic peptide directed towards the N terminal region of human ZNF266
Sequence:	EESRTVQRGD FQASEWKVQL KTKELALQQD VLGEPTSSGI QMIGSHNGGE
Predicted Reactivity:	Human: 100%
Characteristics:	This is a rabbit polyclonal antibody against ZNF266. It was validated on Western Blot and immunohistochemistry.
Purification:	Affinity Purified

Target Details

Target:	ZNF266
---------	--------

Target Details

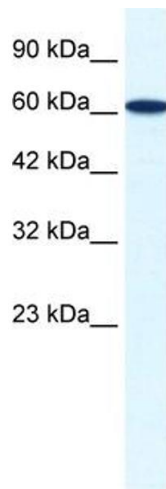
Alternative Name:	ZNF266 (ZNF266 Products)
Background:	Located on chromosome 19, ZNF266 is part of the Kruppel-related zinc finger gene family. Alias Symbols: HZF1 Protein Interaction Partner: KRTAP10-3, KRTAP10-7, KRT40, TRIM41, CEP70, MDFI, KRTAP5-9, UBC, CDC37, SPRY2, Protein Size: 549
Molecular Weight:	62 kDa
Gene ID:	10781
NCBI Accession:	NM_198058 , NP_932175
UniProt:	Q14584

Application Details

Application Notes:	Optimal working dilutions should be determined experimentally by the investigator.
Comment:	Antigen size: 549 AA
Restrictions:	For Research Use only

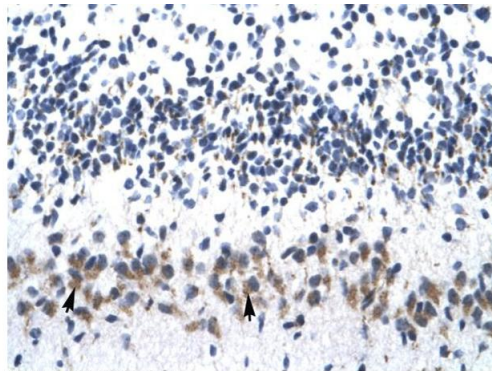
Handling

Format:	Liquid
Concentration:	Lot specific
Buffer:	Liquid. Purified antibody supplied in 1x PBS buffer with 0.09 % (w/v) sodium azide and 2 % sucrose.
Preservative:	Sodium azide
Precaution of Use:	This product contains Sodium azide: a POISONOUS AND HAZARDOUS SUBSTANCE which should be handled by trained staff only.
Handling Advice:	Avoid repeated freeze-thaw cycles.
Storage:	-20 °C
Storage Comment:	For short term use, store at 2-8°C up to 1 week. For long term storage, store at -20°C in small aliquots to prevent freeze-thaw cycles.



Western Blotting

Image 1. WB Suggested Anti-ZNF266 Antibody Titration: 0.2-1 ug/ml ELISA Titer: 1:1562500 Positive Control: HepG2 cell lysate



Immunohistochemistry

Image 2. Human Cerebellum

Rabbit Anti-ZNF266 Antibody
Catalog Number: ARP35808
Lot Number: QC5136
Paraffin Embedded Tissue: Human Cerebellum
Cells with Positive label: Purkinje cells (Indicated with Arrows)
Antibody Concentration: 4.0-8.0 µg/ml
Magnification: 400X