

Datasheet for ABIN2776468  
**anti-SCML1 antibody (Middle Region)**[Go to Product page](#)

## 2 Images

## Overview

Quantity:	100 µL
Target:	SCML1
Binding Specificity:	Middle Region
Reactivity:	Human, Pig, Horse
Host:	Rabbit
Clonality:	Polyclonal
Conjugate:	This SCML1 antibody is un-conjugated
Application:	Western Blotting (WB), Immunohistochemistry (IHC)

## Product Details

Immunogen:	The immunogen is a synthetic peptide directed towards the middle region of human SCML1
Sequence:	ESYSTPLPVS RRENNSPSNL PRPSFCMEEY QRAELEEDPI LSRTSPSPVHP
Predicted Reactivity:	Horse: 77%, Human: 100%, Pig: 86%
Characteristics:	This is a rabbit polyclonal antibody against SCML1. It was validated on Western Blot using a cell lysate as a positive control.
Purification:	Affinity Purified

## Target Details

Target:	SCML1
Alternative Name:	SCML1 ( <a href="#">SCML1 Products</a> )

## Target Details

Background:	The function of SCML1 remains unknown. Alias Symbols: - Protein Interaction Partner: CBX2, PHC3, PCGF2, RNF2, PHC2, PHC1, ELAVL1, Protein Size: 302
-------------	--

Molecular Weight:	34 kDa
-------------------	--------

Gene ID:	6322
----------	------

NCBI Accession:	<a href="#">NM_006746</a> , <a href="#">NP_006737</a>
-----------------	---

UniProt:	<a href="#">Q5H968</a>
----------	------------------------

## Application Details

Application Notes:	Optimal working dilutions should be determined experimentally by the investigator.
--------------------	--

Comment:	Antigen size: 302 AA
----------	----------------------

Restrictions:	For Research Use only
---------------	-----------------------

## Handling

Format:	Liquid
---------	--------

Concentration:	Lot specific
----------------	--------------

Buffer:	Liquid. Purified antibody supplied in 1x PBS buffer with 0.09 % (w/v) sodium azide and 2 % sucrose.
---------	---

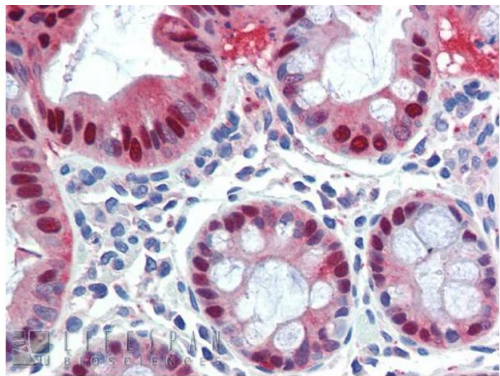
Preservative:	Sodium azide
---------------	--------------

Precaution of Use:	This product contains Sodium azide: a POISONOUS AND HAZARDOUS SUBSTANCE which should be handled by trained staff only.
--------------------	--

Handling Advice:	Avoid repeated freeze-thaw cycles.
------------------	------------------------------------

Storage:	-20 °C
----------	--------

Storage Comment:	For short term use, store at 2-8°C up to 1 week. For long term storage, store at -20°C in small aliquots to prevent freeze-thaw cycles.
------------------	---



Rabbit Anti-SCML1 Antibody  
Catalog Number: ARP35811  
Lot Number: QC11502  
Paraffin Embedded Tissue: Human Colon  
Antibody Concentration: 5.0 µg/ml

Data courtesy of Lifespan Biosciences, Inc.

### Immunohistochemistry

**Image 1.** Immunohistochemistry with Human Colon lysate tissue at an antibody concentration of 5.0ug/ml using anti-SCML1 antibody



### Western Blotting

**Image 2.** WB Suggested Anti-SCML1 Antibody Titration: 0.2-1 µg/ml ELISA Titer: 1:12500 Positive Control: HeLa cell lysate SCML1 is supported by BioGPS gene expression data to be expressed in HeLa