

Datasheet for ABIN2776476
anti-ZNF75 antibody (Middle Region)[Go to Product page](#)

2 Images

Overview

Quantity:	100 µL
Target:	ZNF75
Binding Specificity:	Middle Region
Reactivity:	Human, Horse, Dog
Host:	Rabbit
Clonality:	Polyclonal
Conjugate:	This ZNF75 antibody is un-conjugated
Application:	Western Blotting (WB), Immunohistochemistry (IHC)

Product Details

Immunogen:	The immunogen is a synthetic peptide directed towards the middle region of human ZNF75
Sequence:	LALSEQKRIK HWKMASKLIL PESLSLLTFE DVAVYFSEEE WQLLNPLEKT
Predicted Reactivity:	Dog: 86%, Horse: 86%, Human: 100%
Characteristics:	This is a rabbit polyclonal antibody against ZNF75. It was validated on Western Blot and immunohistochemistry.
Purification:	Protein A purified

Target Details

Target:	ZNF75
Alternative Name:	ZNF75 (ZNF75 Products)

Target Details

Background: The ZNF75 gene, which is located on chromosome X, is predicted to encode a zinc finger protein, currently with unknown function.

Alias Symbols: D8C6, ZNF75, ZNF82

Protein Interaction Partner: UBC,

Protein Size: 510

Molecular Weight: 34 kDa

Gene ID: 7626

NCBI Accession: [NM_007131](#), [NP_009062](#)

UniProt: [P51815](#)

Application Details

Application Notes: Optimal working dilutions should be determined experimentally by the investigator.

Comment: Antigen size: 510 AA

Restrictions: For Research Use only

Handling

Format: Liquid

Concentration: Lot specific

Buffer: Liquid. Purified antibody supplied in 1x PBS buffer with 0.09 % (w/v) sodium azide and 2 % sucrose.

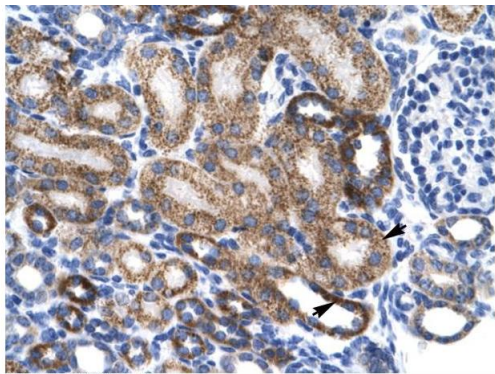
Preservative: Sodium azide

Precaution of Use: This product contains Sodium azide: a POISONOUS AND HAZARDOUS SUBSTANCE which should be handled by trained staff only.

Handling Advice: Avoid repeated freeze-thaw cycles.

Storage: -20 °C

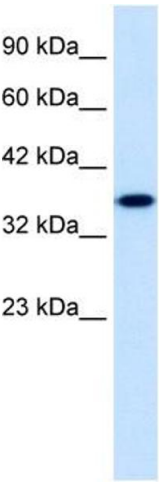
Storage Comment: For short term use, store at 2-8°C up to 1 week. For long term storage, store at -20°C in small aliquots to prevent freeze-thaw cycles.



Rabbit Anti-ZNF75 Antibody
Catalog Number: ARP35823
Lot Number: QC5147
Paraffin Embedded Tissue: Human Kidney
Cells with Positive label: Epithelial cells of renal tubule (Indicated with Arrows)
Antibody Concentration: 4.0-8.0 µg/ml
Magnification: 400X

Immunohistochemistry

Image 1. Human kidney



Western Blotting

Image 2. WB Suggested Anti-ZNF75 Antibody Titration:
1.25ug/ml ELISA Titer: 1:312500 Positive Control: HepG2
cell lysate