

Datasheet for ABIN2776488
anti-GTF3C3 antibody (N-Term)



[Go to Product page](#)

1 Image

Overview

Quantity:	100 µL
Target:	GTF3C3
Binding Specificity:	N-Term
Reactivity:	Human, Mouse, Rat, Cow, Dog, Horse, Pig
Host:	Rabbit
Clonality:	Polyclonal
Conjugate:	This GTF3C3 antibody is un-conjugated
Application:	Western Blotting (WB)

Product Details

Immunogen:	The immunogen is a synthetic peptide directed towards the N terminal region of human GTF3C3
Sequence:	GKLSAEENPD DSEVPSSSGI NSTKSQDKDV NEGETSDGVR KSVHKVFASM
Predicted Reactivity:	Cow: 86%, Dog: 85%, Horse: 92%, Human: 100%, Mouse: 92%, Pig: 100%, Rat: 85%
Characteristics:	This is a rabbit polyclonal antibody against GTF3C3. It was validated on Western Blot using a cell lysate as a positive control.
Purification:	Protein A purified

Target Details

Target:	GTF3C3
---------	--------

Target Details

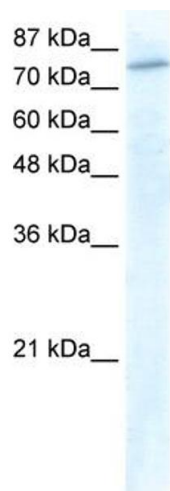
Alternative Name:	GTF3C3 (GTF3C3 Products)
Background:	<p>GTF3C3 subunit of human transcription factor TFIIIIon Channel was identified as a DEDD- and FLAME-3-specific interacting protein.</p> <p>Alias Symbols: TFIIIC102, TFIIICgamma, TFIIIC2-102</p> <p>Protein Interaction Partner: CEP250, TP53, UBC, EED, HNRNPD, VCP, EPAS1, GTF3C1, GTF3C6, CPSF2, CPSF1, GTF3C4, GTF3C5, GTF3C2, SIRT7, SUMO2, SMARCAD1, MYC, EP300, PCBD1, SQSTM1, RPAP2, PLK1, DEDD2, BRF1, TBP, DEDD, POLR3C,</p> <p>Protein Size: 886</p>
Molecular Weight:	101 kDa
Gene ID:	9330
NCBI Accession:	NM_012086 , NP_036218
UniProt:	Q9Y5Q9

Application Details

Application Notes:	Optimal working dilutions should be determined experimentally by the investigator.
Comment:	Antigen size: 886 AA
Restrictions:	For Research Use only

Handling

Format:	Liquid
Concentration:	Lot specific
Buffer:	Liquid. Purified antibody supplied in 1x PBS buffer with 0.09 % (w/v) sodium azide and 2 % sucrose.
Preservative:	Sodium azide
Precaution of Use:	This product contains Sodium azide: a POISONOUS AND HAZARDOUS SUBSTANCE which should be handled by trained staff only.
Handling Advice:	Avoid repeated freeze-thaw cycles.
Storage:	-20 °C
Storage Comment:	For short term use, store at 2-8°C up to 1 week. For long term storage, store at -20°C in small aliquots to prevent freeze-thaw cycles.



Western Blotting

Image 1. WB Suggested Anti-GTF3C3 Antibody Titration: 1.25ug/ml ELISA Titer: 1:62500 Positive Control: HepG2 cell lysate GTF3C3 is supported by BioGPS gene expression data to be expressed in HepG2