

Datasheet for ABIN2776489  
**anti-GTF3C5 antibody (N-Term)**[Go to Product page](#)

## 2 Images

## Overview

Quantity:	100 µL
Target:	GTF3C5
Binding Specificity:	N-Term
Reactivity:	Human, Mouse, Rat, Cow, Horse, Dog, Rabbit, Guinea Pig
Host:	Rabbit
Clonality:	Polyclonal
Conjugate:	This GTF3C5 antibody is un-conjugated
Application:	Western Blotting (WB), Immunohistochemistry (IHC)

## Product Details

Immunogen:	The immunogen is a synthetic peptide directed towards the N terminal region of human GTF3C5
Sequence:	KVLMRLPEKE AFFHQELPLY IPPPIFSRLD APVDYFYRPE TQHREGYNPN
Predicted Reactivity:	Cow: 86%, Dog: 93%, Guinea Pig: 93%, Horse: 93%, Human: 100%, Mouse: 93%, Rabbit: 93%, Rat: 93%
Characteristics:	This is a rabbit polyclonal antibody against GTF3C5. It was validated on Western Blot and immunohistochemistry.
Purification:	Affinity Purified

## Target Details

Target:	GTF3C5
---------	--------

## Target Details

Alternative Name:	GTF3C5 ( <a href="#">GTF3C5 Products</a> )
Background:	<p>GTF3C5 is polypeptide 5 of general transcription factor IIIon Channel. Human transcription factor IIIon Channel (hTFIIIon Channel) is a multisubunit complex that directly recognizes promoter elements and recruits TFIIIB and RNA polymerase III.</p> <p>Alias Symbols: TFIIIC63, TFIIIC2-63, TFIIICepsilon</p> <p>Protein Interaction Partner: MDFI, NOTCH2NL, KRTAP10-3, KRT40, CEP250, VCP, UBC, ECT2, PAXIP1, SRA1, GTF3C6, PBRM1, GTF3C3, GTF3C4, GTF3C2, GTF3C1, CUL1, CUL3, SMARCAD1, tat, EP300, TCF4, TCF21, TAF10, BRF1, POLR3C, TBP,</p> <p>Protein Size: 519</p>
Molecular Weight:	60 kDa
Gene ID:	9328
NCBI Accession:	<a href="#">NM_012087</a> , <a href="#">NP_036219</a>
UniProt:	<a href="#">Q9Y5Q8</a>

## Application Details

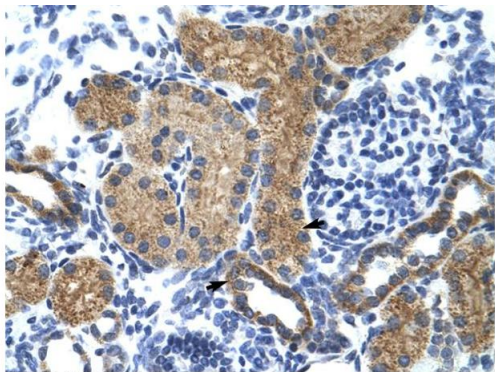
Application Notes:	Optimal working dilutions should be determined experimentally by the investigator.
Comment:	Antigen size: 519 AA
Restrictions:	For Research Use only

## Handling

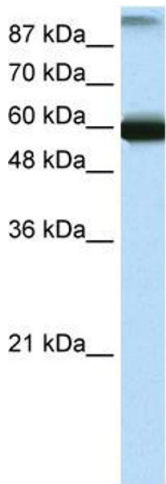
Format:	Liquid
Concentration:	Lot specific
Buffer:	Liquid. Purified antibody supplied in 1x PBS buffer with 0.09 % (w/v) sodium azide and 2 % sucrose.
Preservative:	Sodium azide
Precaution of Use:	This product contains Sodium azide: a POISONOUS AND HAZARDOUS SUBSTANCE which should be handled by trained staff only.
Handling Advice:	Avoid repeated freeze-thaw cycles.
Storage:	-20 °C
Storage Comment:	For short term use, store at 2-8°C up to 1 week. For long term storage, store at -20°C in small

aliquots to prevent freeze-thaw cycles.

Images



Rabbit Anti-GTF3C5 Antibody  
Catalog Number: ARP35843  
Lot Number: QC5164  
Paraffin Embedded Tissue: Human Kidney  
Cells with Positive label: Epithelial cells of renal tubule (Indicated with Arrows)  
Antibody Concentration: 4.0-8.0 µg/ml  
Magnification: 400X



Immunohistochemistry

Image 1. Human kidney

Western Blotting

Image 2. WB Suggested Anti-GTF3C5 Antibody Titration:  
0.2-1 µg/ml ELISA Titer: 1:312500 Positive Control:  
Transfected 293T