

Datasheet for ABIN2776495
anti-NUFIP1 antibody (N-Term)[Go to Product page](#)

3 Images

Overview

Quantity:	100 µL
Target:	NUFIP1
Binding Specificity:	N-Term
Reactivity:	Human
Host:	Rabbit
Clonality:	Polyclonal
Conjugate:	This NUFIP1 antibody is un-conjugated
Application:	Western Blotting (WB)

Product Details

Immunogen:	The immunogen is a synthetic peptide directed towards the N terminal region of human NUFIP1
Sequence:	GQPWNFHA ST SWYWRQSSDR FPRHQKSFNP AVKNSYYPRK YDAKFTDFSL
Predicted Reactivity:	Human: 100%
Characteristics:	This is a rabbit polyclonal antibody against NUFIP1. It was validated on Western Blot using a cell lysate as a positive control.
Purification:	Affinity Purified

Target Details

Target:	NUFIP1
---------	--------

Target Details

Alternative Name:	NUFIP1 (NUFIP1 Products)
Background:	<p>The exact function of NUFIP1 remains unknown.</p> <p>Alias Symbols: NUFIP, bA540M5.1</p> <p>Protein Interaction Partner: UBC, Nhp2l1, RUVBL2, RUVBL1, TAF9, KLF6, CCNT1, FMR1, BRCA1, CDK9,</p> <p>Protein Size: 495</p>
Molecular Weight:	56 kDa
Gene ID:	26747
NCBI Accession:	NM_012345 , NP_036477
UniProt:	Q9UHK0
Pathways:	Ribonucleoprotein Complex Subunit Organization

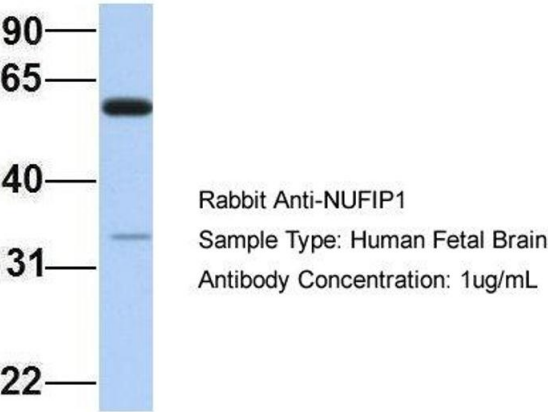
Application Details

Application Notes:	Optimal working dilutions should be determined experimentally by the investigator.
Comment:	Antigen size: 495 AA
Restrictions:	For Research Use only

Handling

Format:	Liquid
Concentration:	Lot specific
Buffer:	Liquid. Purified antibody supplied in 1x PBS buffer with 0.09 % (w/v) sodium azide and 2 % sucrose.
Preservative:	Sodium azide
Precaution of Use:	This product contains Sodium azide: a POISONOUS AND HAZARDOUS SUBSTANCE which should be handled by trained staff only.
Handling Advice:	Avoid repeated freeze-thaw cycles.
Storage:	-20 °C
Storage Comment:	For short term use, store at 2-8°C up to 1 week. For long term storage, store at -20°C in small aliquots to prevent freeze-thaw cycles.

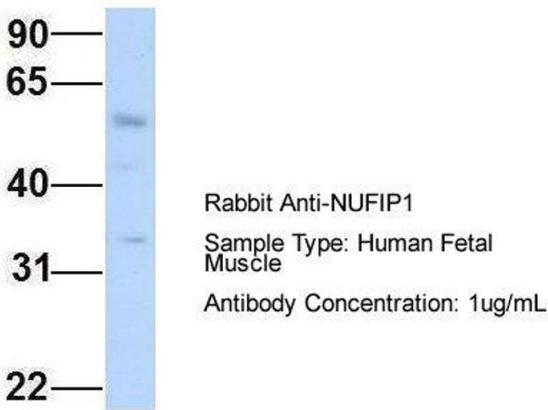
NUFIP1



Western Blotting

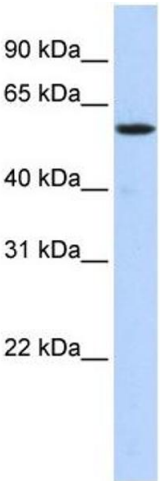
Image 1. Host: Rabbit Target Name: NUFIP1 Sample Type: Human Fetal Brain Antibody Dilution: 1.0 µg/ml

NUFIP1



Western Blotting

Image 2. Host: Rabbit Target Name: NUFIP1 Sample Type: Human Fetal Muscle Antibody Dilution: 1.0 µg/ml



Western Blotting

Image 3. WB Suggested Anti-NUFIP1 Antibody Titration: 0.2-1 µg/ml ELISA Titer: 1:312500 Positive Control: Transfected 293T