

Datasheet for ABIN2776499  
**anti-ESR2 antibody (N-Term)**

## 6 Images

[Go to Product page](#)

## Overview

Quantity:	100 µL
Target:	ESR2
Binding Specificity:	N-Term
Reactivity:	Human, Rat
Host:	Rabbit
Clonality:	Polyclonal
Conjugate:	This ESR2 antibody is un-conjugated
Application:	Western Blotting (WB), Immunohistochemistry (IHC)

## Product Details

Immunogen:	The immunogen is a synthetic peptide directed towards the N terminal region of human ESR2
Sequence:	SYVDSHHEYPA MTFYSPAVM NYSIPSNVTN LEGGPGRQTT SPNVLWPTPG
Predicted Reactivity:	Human: 100%, Rat: 91%
Characteristics:	This is a rabbit polyclonal antibody against ESR2. It was validated on Western Blot.
Purification:	Affinity Purified

## Target Details

Target:	ESR2
Alternative Name:	ESR2 ( <a href="#">ESR2 Products</a> )
Background:	ESR2 is a member of the family of estrogen receptors and superfamily of nuclear receptor

## Target Details

transcription factors. It contains an N-terminal DNA binding domain and C-terminal ligand binding domain and is localized to the nucleus, cytoplasm, and mitochondria. Upon binding to 17beta-estradiol or related ligands, the protein forms homo- or hetero-dimers that interact with specific DNA sequences to activate transcription. Some isoforms dominantly inhibit the activity of other estrogen receptor family members. Several alternatively spliced transcript variants of this gene have been described, but the full-length nature of some of these variants has not been fully characterized.

Alias Symbols: ER-BETA, ESR-BETA, ESRB, ESTRB, Erb, NR3A2

Protein Interaction Partner: PLSCR1, MEOX2, NOTCH2NL, RFX6, MMS19, BCAS2, NCOA1, RPS18, MRPS15, MRPS22, ZC3HAV1, PTC3, EXOSC4, MRPS2, MED4, MRPS27, MRPS31, MED17, TRIM24, NRIP1, NCOA3, STAU1, SP1, PABPC5, MYLK2, RPS11, RPS4X, RPLP0, RPL36AL, PPP5C, HSPA8, ESR2, ESR1, ACTB, SRA1, ARI

Protein Size: 530

Molecular Weight: 56 kDa

Gene ID: 2100

NCBI Accession: [NM\\_001437](#), [NP\\_001428](#)

UniProt: [Q92731](#)

Pathways: [Nuclear Receptor Transcription Pathway](#), [EGFR Signaling Pathway](#), [Intracellular Steroid Hormone Receptor Signaling Pathway](#), [Steroid Hormone Mediated Signaling Pathway](#), [Regulation of Intracellular Steroid Hormone Receptor Signaling](#)

## Application Details

Application Notes: Optimal working dilutions should be determined experimentally by the investigator.

Comment: Antigen size: 530 AA

Restrictions: For Research Use only

## Handling

Format: Liquid

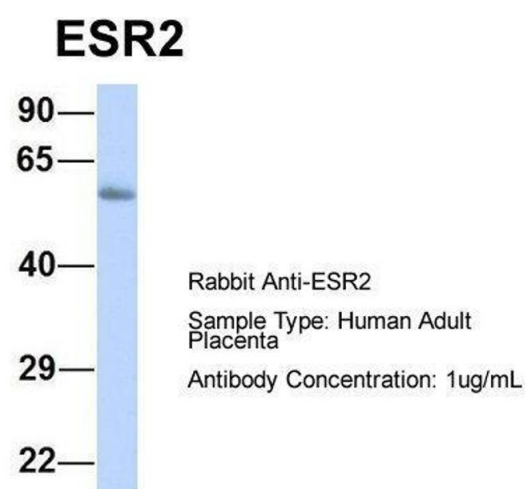
Concentration: Lot specific

Buffer: Liquid. Purified antibody supplied in 1x PBS buffer with 0.09 % (w/v) sodium azide and 2 % sucrose.

## Handling

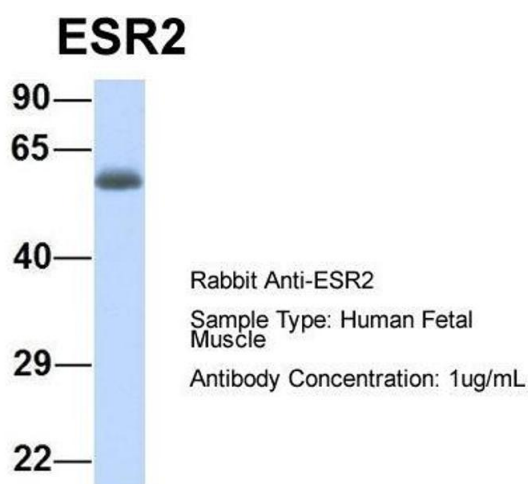
Preservative:	Sodium azide
Precaution of Use:	This product contains Sodium azide: a POISONOUS AND HAZARDOUS SUBSTANCE which should be handled by trained staff only.
Handling Advice:	Avoid repeated freeze-thaw cycles.
Storage:	-20 °C
Storage Comment:	For short term use, store at 2-8°C up to 1 week. For long term storage, store at -20°C in small aliquots to prevent freeze-thaw cycles.

## Images



### Western Blotting

**Image 1.** Host: Rabbit Target Name: ESR2 Sample Type: Human Adult Placenta Antibody Dilution: 1.0ug/ml

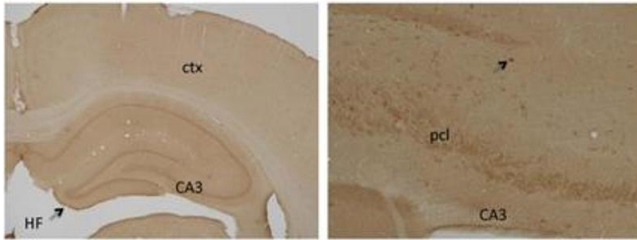


### Western Blotting

**Image 2.** Host: Rabbit Target Name: ESR2 Sample Type: Human Fetal Muscle Antibody Dilution: 1.0ug/ml

Immunohistochemistry

**Image 3.** Rat Brain



Please check the [product details page](#) for more images. Overall 6 images are available for ABIN2776499.