

Datasheet for ABIN2776506

anti-ZBTB44 antibody (C-Term)



[Go to Product page](#)

1 Image

1 Publication

Overview

Quantity:	100 µL
Target:	ZBTB44
Binding Specificity:	C-Term
Reactivity:	Human, Dog, Cow, Mouse, Rat, Guinea Pig, Horse, Rabbit
Host:	Rabbit
Clonality:	Polyclonal
Conjugate:	This ZBTB44 antibody is un-conjugated
Application:	Western Blotting (WB)

Product Details

Immunogen:	The immunogen is a synthetic peptide directed towards the C terminal region of human BTBD15
Sequence:	PVDSSLAFPW TFPFGIDRRI QPEKVKQAEN TRTLELPGPS ETGRRMADYV
Predicted Reactivity:	Cow: 86%, Dog: 86%, Guinea Pig: 86%, Horse: 86%, Human: 100%, Mouse: 86%, Rabbit: 93%, Rat: 86%
Characteristics:	This is a rabbit polyclonal antibody against BTBD15. It was validated on Western Blot using a cell lysate as a positive control.
Purification:	Affinity Purified

Target Details

Target:	ZBTB44
---------	--------

Target Details

Alternative Name:	BTBD15 (ZBTB44 Products)
Background:	<p>Located on chromosome 11, the BTBD15 gene encodes a BTB (POZ) domain containing 15 protein with unknown function.</p> <p>Alias Symbols: BTBD15, ZNF851, HSPC063</p> <p>Protein Interaction Partner: PSMA6, FAM124A, SMYD1, ZBTB44, WDFY3, POLI, GLRX3, AP1M1, RAD23A, SMURF2, SMAD7, SMAD1,</p> <p>Protein Size: 467</p>
Molecular Weight:	52 kDa
Gene ID:	29068
NCBI Accession:	NM_014155 , NP_054874
UniProt:	Q86XX5

Application Details

Application Notes:	Optimal working dilutions should be determined experimentally by the investigator.
Comment:	Antigen size: 467 AA
Restrictions:	For Research Use only

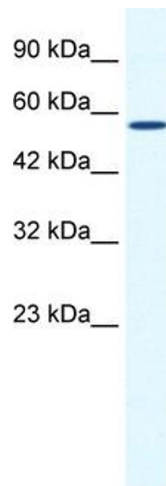
Handling

Format:	Liquid
Concentration:	Lot specific
Buffer:	Liquid. Purified antibody supplied in 1x PBS buffer with 0.09 % (w/v) sodium azide and 2 % sucrose.
Preservative:	Sodium azide
Precaution of Use:	This product contains Sodium azide: a POISONOUS AND HAZARDOUS SUBSTANCE which should be handled by trained staff only.
Handling Advice:	Avoid repeated freeze-thaw cycles.
Storage:	-20 °C
Storage Comment:	For short term use, store at 2-8°C up to 1 week. For long term storage, store at -20°C in small aliquots to prevent freeze-thaw cycles.

Publications

Product cited in: Tilley, Harvey, Heguy, Hackett, Wang, OConnor, Crystal: "Down-regulation of the notch pathway in human airway epithelium in association with smoking and chronic obstructive pulmonary disease." in: **American journal of respiratory and critical care medicine**, Vol. 179, Issue 6, pp. 457-66, (2009) ([PubMed](#)).

Images



Western Blotting

Image 1. WB Suggested Anti-BTBD15 Antibody Titration: 0.2-1 ug/ml ELISA Titer: 1:62500 Positive Control: HepG2 cell lysate