

Datasheet for ABIN2776514  
**anti-VSX1 antibody (Middle Region)**



[Go to Product page](#)

1 Image

## Overview

Quantity:	100 µL
Target:	VSX1
Binding Specificity:	Middle Region
Reactivity:	Human, Mouse, Cow, Dog, Horse, Pig, Saccharomyces cerevisiae
Host:	Rabbit
Clonality:	Polyclonal
Conjugate:	This VSX1 antibody is un-conjugated
Application:	Western Blotting (WB)

## Product Details

Immunogen:	The immunogen is a synthetic peptide directed towards the middle region of human VSX1
Sequence:	FLPPRGPEPA APLAPSRPPP ALGRQKRSDS VSTSEDEDSQS EDRNDLKASP
Predicted Reactivity:	Cow: 93%, Dog: 86%, Horse: 93%, Human: 100%, Mouse: 79%, Pig: 86%, Yeast: 86%
Characteristics:	This is a rabbit polyclonal antibody against VSX1. It was validated on Western Blot using a cell lysate as a positive control.
Purification:	Affinity Purified

## Target Details

Target:	VSX1
Alternative Name:	VSX1 ( <a href="#">VSX1 Products</a> )

## Target Details

Background:	<p>VSX1 contains a paired-like homeodomain and binds to the core of the locus control region of the red/green visual pigment gene cluster. VSX1 may regulate expression of the cone opsin genes early in development. Mutations in this gene can cause posterior polymorphous corneal dystrophy (PPCD) and keratoconus. The protein encoded by this gene contains a paired-like homeodomain and binds to the core of the locus control region of the red/green visual pigment gene cluster. The encoded protein may regulate expression of the cone opsin genes early in development. Mutations in this gene can cause posterior polymorphous corneal dystrophy (PPCD) and keratoconus. Two transcript variants encoding different isoforms have been found for this gene. The protein encoded by this gene contains a paired-like homeodomain and binds to the core of the locus control region of the red/green visual pigment gene cluster. The encoded protein may regulate expression of the cone opsin genes early in development. Mutations in this gene can cause posterior polymorphous corneal dystrophy and keratoconus. Alternatively spliced transcript variants encoding different isoforms have been described.</p> <p>Alias Symbols: KTCN, PPCD, PPD, RINX, KTCN1, CAASDS</p> <p>Protein Size: 365</p>
-------------	--

Molecular Weight:	38 kDa
Gene ID:	30813
NCBI Accession:	<a href="#">NM_014588</a> , <a href="#">NP_055403</a>
UniProt:	<a href="#">Q9NZR4</a>

## Application Details

Application Notes:	Optimal working dilutions should be determined experimentally by the investigator.
Comment:	Antigen size: 365 AA
Restrictions:	For Research Use only

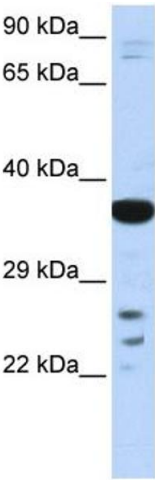
## Handling

Format:	Liquid
Concentration:	Lot specific
Buffer:	Liquid. Purified antibody supplied in 1x PBS buffer with 0.09 % (w/v) sodium azide and 2 % sucrose.
Preservative:	Sodium azide

Handling

Precaution of Use:	This product contains Sodium azide: a POISONOUS AND HAZARDOUS SUBSTANCE which should be handled by trained staff only.
Handling Advice:	Avoid repeated freeze-thaw cycles.
Storage:	-20 °C
Storage Comment:	For short term use, store at 2-8°C up to 1 week. For long term storage, store at -20°C in small aliquots to prevent freeze-thaw cycles.

Images



**Western Blotting**

**Image 1.** WB Suggested Anti-VSX1 Antibody Titration: 0.2-1 ug/ml ELISA Titer: 1:62500 Positive Control: Human Liver