

Datasheet for ABIN2776520
anti-MLXIP antibody (C-Term)[Go to Product page](#)

2 Images

Overview

Quantity:	100 µL
Target:	MLXIP
Binding Specificity:	C-Term
Reactivity:	Human, Mouse, Rat, Dog, Guinea Pig, Horse, Cow
Host:	Rabbit
Clonality:	Polyclonal
Conjugate:	This MLXIP antibody is un-conjugated
Application:	Western Blotting (WB), Immunohistochemistry (IHC)

Product Details

Immunogen:	The immunogen is a synthetic peptide directed towards the C terminal region of human MLXIP
Sequence:	ALSWLDQHCS LPILRPMVLS TLRQLSTSTS ILTDPAQLPE QASKAVTRIG
Predicted Reactivity:	Cow: 77%, Dog: 79%, Guinea Pig: 86%, Horse: 79%, Human: 100%, Mouse: 86%, Rat: 86%
Characteristics:	This is a rabbit polyclonal antibody against MLXIP. It was validated on Western Blot.
Purification:	Affinity Purified

Target Details

Target:	MLXIP
Alternative Name:	MLXIP (MLXIP Products)
Background:	MONDOA forms heterodimers with MLX (MIM 602976) that can bind to and activate

Target Details

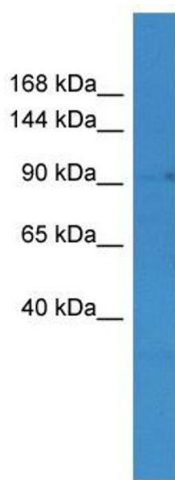
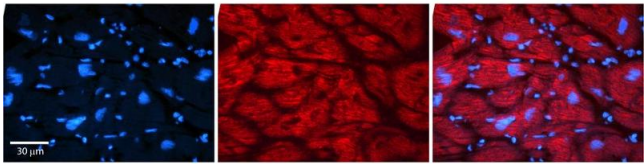
	transcription from CACGTG E boxes. Alias Symbols: KIAA0867, MIR, MONDOA, bHLHe36 Protein Interaction Partner: CNPY2, MLX, YWHAB, Protein Size: 919
Molecular Weight:	101 kDa
Gene ID:	22877
NCBI Accession:	NM_014938 , NP_055753
UniProt:	Q9HAP2

Application Details

Application Notes:	Optimal working dilutions should be determined experimentally by the investigator.
Comment:	Antigen size: 919 AA
Restrictions:	For Research Use only

Handling

Format:	Liquid
Concentration:	Lot specific
Buffer:	Liquid. Purified antibody supplied in 1x PBS buffer with 0.09 % (w/v) sodium azide and 2 % sucrose.
Preservative:	Sodium azide
Precaution of Use:	This product contains Sodium azide: a POISONOUS AND HAZARDOUS SUBSTANCE which should be handled by trained staff only.
Handling Advice:	Avoid repeated freeze-thaw cycles.
Storage:	-20 °C
Storage Comment:	For short term use, store at 2-8°C up to 1 week. For long term storage, store at -20°C in small aliquots to prevent freeze-thaw cycles.



Immunohistochemistry

Image 1. Rabbit Anti-MLXIP Antibody Catalog Number: ARP35892_P050 Formalin Fixed Paraffin Embedded Tissue: Human Adult heart Observed Staining: Cytoplasmic (stronger than ARP35891) Primary Antibody Concentration: 1:600 Secondary Antibody: Donkey anti-Rabbit-Cy2/3 Secondary Antibody Concentration: 1:200 Magnification: 20X Exposure Time: 0.5 – 2.0 sec Protocol located in Reviews and Data.

Western Blotting

Image 2. WB Suggested Anti-MLXIP Antibody Titration: 0.2-1 ug/ml ELISA Titer: 1:62500 Positive Control: Jurkat cell lysate MLXIP is strongly supported by BioGPS gene expression data to be expressed in Human Jurkat cells