



[Go to Product page](#)

Datasheet for ABIN2776521  
**anti-ZFYVE26 antibody (N-Term)**

1 Image

Overview

Quantity:	100 µL
Target:	ZFYVE26
Binding Specificity:	N-Term
Reactivity:	Human, Mouse, Rat, Cow, Dog, Guinea Pig, Horse, Rabbit
Host:	Rabbit
Clonality:	Polyclonal
Conjugate:	This ZFYVE26 antibody is un-conjugated
Application:	Western Blotting (WB)

Product Details

Immunogen:	The immunogen is a synthetic peptide directed towards the N-terminal region of Human ZFYVE26
Sequence:	PQLQEGQGDI PKRVEDILQA LVVCPNLLRC GQDINPQRVA WWLLVLEKW
Predicted Reactivity:	Cow: 86%, Dog: 86%, Guinea Pig: 86%, Horse: 86%, Human: 100%, Mouse: 77%, Rabbit: 93%, Rat: 93%
Characteristics:	This is a rabbit polyclonal antibody against ZFYVE26. It was validated on Western Blot.
Purification:	Affinity Purified

Target Details

Target:	ZFYVE26
---------	---------

## Target Details

---

Alternative Name: ZFYVE26 ([ZFYVE26 Products](#))

---

Background: This gene encodes a protein which contains a FYVE zinc finger binding domain. The presence of this domain is thought to target these proteins to membrane lipids through interaction with phospholipids in the membrane. Mutations in this gene are associated with autosomal recessive spastic paraplegia-15.

Protein Interaction Partner: KRTAP10-3, KRTAP10-9, KRTAP10-7, KRT40, PNMA5, USHBP1, CEP44, TFIP11, PNMA1, TRAF1, TDO2, TADA2A, MDFI, KRT15, HNRNPC, GOLGA2, ALAS1, UBC,

Protein Size: 791

---

Molecular Weight: 87 kDa

---

Gene ID: 23503

---

## Application Details

---

Application Notes: Optimal working dilution should be determined by the investigator.

---

Restrictions: For Research Use only

---

## Handling

---

Format: Liquid

---

Concentration: 1 mg/mL

---

Buffer: Liquid. Purified antibody supplied in 1x PBS buffer with 0.09 % (w/v) sodium azide and 2 % sucrose.

---

Preservative: Sodium azide

---

Precaution of Use: This product contains Sodium azide: a POISONOUS AND HAZARDOUS SUBSTANCE which should be handled by trained staff only.

---

Handling Advice: Avoid repeat freeze-thaw cycles.

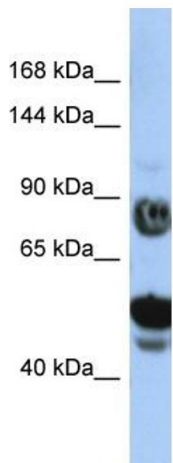
---

Storage: -20 °C

---

Storage Comment: For short term use, store at 2-8°C up to 1 week. For long term storage, store at -20°C in small aliquots to prevent freeze-thaw cycles.

---



Host: Rabbit  
Target Name: ZFYVE26  
Sample Tissue: HepG2 Cell Lysate  
Antibody Dilution: 1.0µg/ml

### Western Blotting

**Image 1.** Host: Rabbit Target Name: ZFYVE26 Sample Type: HepG2 Whole Cell lysates Antibody Dilution: 1.0ug/ml