

Datasheet for ABIN2776544
anti-LSM2 antibody (Middle Region)

3 Images

[Go to Product page](#)

Overview

Quantity:	100 µL
Target:	LSM2
Binding Specificity:	Middle Region
Reactivity:	Human, Mouse, Rat, Cow, Goat, Guinea Pig, Horse, Rabbit, Zebrafish (Danio rerio)
Host:	Rabbit
Clonality:	Polyclonal
Conjugate:	This LSM2 antibody is un-conjugated
Application:	Western Blotting (WB), Immunohistochemistry (IHC)

Product Details

Immunogen:	The immunogen is a synthetic peptide directed towards the middle region of human LSM2
Sequence:	TDPEKYPHML SVKNCFIRGS VVRYVQLPAD EVDTQLLQDA ARKEALQQKQ
Predicted Reactivity:	Cow: 100%, Goat: 100%, Guinea Pig: 100%, Horse: 100%, Human: 100%, Mouse: 100%, Rabbit: 100%, Rat: 100%, Zebrafish: 93%
Characteristics:	This is a rabbit polyclonal antibody against LSM2. It was validated on Western Blot and immunohistochemistry.
Purification:	Protein A purified

Target Details

Target:	LSM2
---------	------

Target Details

Alternative Name:	LSM2 (LSM2 Products)
Background:	<p>Sm-like proteins were identified in a variety of organisms based on sequence homology with the Sm protein family. Sm-like proteins contain the Sm sequence motif, which consists of 2 regions separated by a linker of variable length that folds as a loop. The Sm-like proteins are thought to form a stable heteromer present in tri-snRNP particles, which are important for pre-mRNA splicing. Sm-like proteins were identified in a variety of organisms based on sequence homology with the Sm protein family (see SNRPD2, MIM 601061). Sm-like proteins contain the Sm sequence motif, which consists of 2 regions separated by a linker of variable length that folds as a loop. The Sm-like proteins are thought to form a stable heteromer present in tri-snRNP particles, which are important for pre-mRNA splicing.[supplied by OMIM].</p> <p>Alias Symbols: G7B, snRNP, C6orf28, YBL026W</p> <p>Protein Interaction Partner: REL, MEOX2, MAGEA6, KRT13, CLNS1A, AES, LNX1, TRIM54, BANP, LSM3, UBC, RALA, RNH1, RAB1B, ZNF408, SNRPE, SNRPD2, EXOSC10, DNAJA1, SOX2, LSM8, LSM7, LSM6, SF3B2, SNRPB, PRCC, TRIM56, PYROXD1, LSM4, LSM5, RBM8A, DHX38, DHX16, SNRPD1, ILF3, DKC1, RNU6ATAC, R</p> <p>Protein Size: 95</p>
Molecular Weight:	10 kDa
Gene ID:	57819
NCBI Accession:	NM_021177 , NP_067000
UniProt:	Q9Y333
Pathways:	Ribonucleoprotein Complex Subunit Organization

Application Details

Application Notes:	Optimal working dilutions should be determined experimentally by the investigator.
Comment:	Antigen size: 95 AA
Restrictions:	For Research Use only

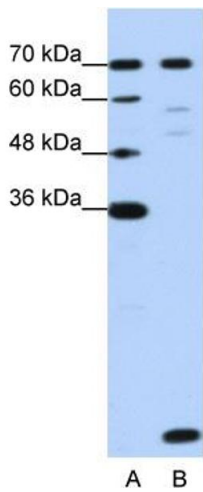
Handling

Format:	Liquid
Concentration:	Lot specific
Buffer:	Liquid. Purified antibody supplied in 1x PBS buffer with 0.09 % (w/v) sodium azide and 2 %

Handling

	sucrose.
Preservative:	Sodium azide
Precaution of Use:	This product contains Sodium azide: a POISONOUS AND HAZARDOUS SUBSTANCE which should be handled by trained staff only.
Handling Advice:	Avoid repeated freeze-thaw cycles.
Storage:	-20 °C
Storage Comment:	For short term use, store at 2-8°C up to 1 week. For long term storage, store at -20°C in small aliquots to prevent freeze-thaw cycles.

Images



Western Blotting

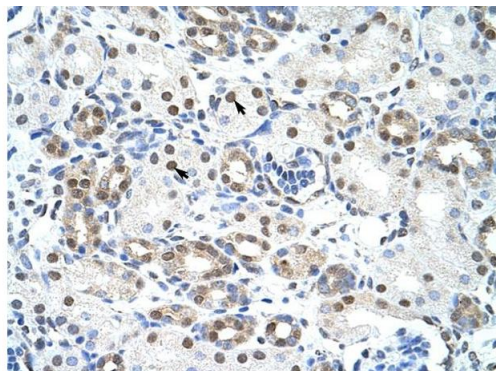
Image 1. WB Suggested Anti-LSM2 Antibody Titration:
1.25ug/ml Positive Control: HepG2 cell lysate



Rabbit Anti-LSM2 Antibody
Catalog Number: ARP40963
Lot Number: QC10344
Paraffin Embedded Tissue: Human Heart
Cells with Positive label: Myocardial cells (Indicated with Arrows)
Antibody Concentration: 4.0-8.0 µg/ml
Magnification: 400X

Immunohistochemistry

Image 2. Rabbit Anti-LSM2Antibody Paraffin Embedded
Tissue: Human Heart Cellular Data: Myocardial cells
Antibody Concentration: 4.0-8.0 ug/ml Magnification: 400X



Rabbit Anti-LSM2 Antibody
Catalog Number: ARP40963
Lot Number: QC10344
Paraffin Embedded Tissue: Human Kidney
Cells with Positive label: Epithelial cells of renal tubule (Indicated with Arrows)
Antibody Concentration: 4.0-8.0 µg/ml
Magnification: 400X

Immunohistochemistry

Image 3. Rabbit Anti-LSM2 Antibody Paraffin Embedded
Tissue: Human Kidney Cellular Data: Epithelial cells of renal
tubule Antibody Concentration: 4.0-8.0 ug/ml Magnification:
400X