



[Go to Product page](#)

Datasheet for ABIN2776545

anti-PTBP2 antibody (N-Term)

1 Image

1 Publication

Overview

| | |
|----------------------|--|
| Quantity: | 100 µL |
| Target: | PTBP2 |
| Binding Specificity: | N-Term |
| Reactivity: | Human, Mouse, Rat, Dog, Cow, Guinea Pig, Rabbit, Zebrafish (Danio rerio) |
| Host: | Rabbit |
| Clonality: | Polyclonal |
| Conjugate: | This PTBP2 antibody is un-conjugated |
| Application: | Western Blotting (WB) |

Product Details

| | |
|-----------------------|---|
| Immunogen: | The immunogen is a synthetic peptide directed towards the N terminal region of human PTBP2 |
| Sequence: | MDGIVTEVAV GVKRGSDLL SGSVLSSPNS NMSSMVVTAN GNDSKKFKGE |
| Predicted Reactivity: | Cow: 93%, Dog: 100%, Guinea Pig: 100%, Human: 100%, Mouse: 100%, Rabbit: 100%, Rat: 100%, Zebrafish: 92% |
| Characteristics: | This is a rabbit polyclonal antibody against PTBP2. It was validated on Western Blot using a cell lysate as a positive control. |
| Purification: | Protein A purified |

Target Details

| | |
|---------|-------|
| Target: | PTBP2 |
|---------|-------|

Target Details

| | |
|-------------------|---|
| Alternative Name: | PTBP2 (PTBP2 Products) |
| Background: | <p>PTBP2 binds to the intronic cluster of RNA regulatory elements, downstream control sequence (DCS). It is implicated in controlling the assembly of other splicing-regulatory proteins. This protein is very similar to the polypyrimidine tract binding protein but it is expressed primarily in the brain.</p> <p>Alias Symbols: PTB, nPTB, PTBLP, brPTB, nPTB5, nPTB6, nPTB7, nPTB8</p> <p>Protein Interaction Partner: PTBP2, RBM10, EIF5A2, PUF60, KHDRBS1, KHDRBS3, TOM1, MATR3, QKI, UBC, SNRPA, RBM4, HNRNPD, HNRNPC, HNRNPAB, ELAVL1, UBE2E2, PCBP3, SUMO2, CALCOCO2, KHSRP, FUS,</p> <p>Protein Size: 356</p> |
| Molecular Weight: | 40 kDa |
| Gene ID: | 58155 |
| NCBI Accession: | NM_021190 |
| Pathways: | Ribonucleoprotein Complex Subunit Organization , SARS-CoV-2 Protein Interactome |

Application Details

| | |
|--------------------|--|
| Application Notes: | Optimal working dilutions should be determined experimentally by the investigator. |
| Comment: | Antigen size: 356 AA |
| Restrictions: | For Research Use only |

Handling

| | |
|--------------------|--|
| Format: | Liquid |
| Concentration: | Lot specific |
| Buffer: | Liquid. Purified antibody supplied in 1x PBS buffer with 0.09 % (w/v) sodium azide and 2 % sucrose. |
| Preservative: | Sodium azide |
| Precaution of Use: | This product contains Sodium azide: a POISONOUS AND HAZARDOUS SUBSTANCE which should be handled by trained staff only. |
| Handling Advice: | Avoid repeated freeze-thaw cycles. |
| Storage: | -20 °C |

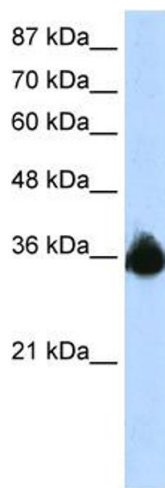
Handling

Storage Comment: For short term use, store at 2-8°C up to 1 week. For long term storage, store at -20°C in small aliquots to prevent freeze-thaw cycles.

Publications

Product cited in: Takeshita, Ichikawa, Nitta, Goyama, Asai, Ogawa, Chiba, Kurokawa: "AML1-Evi-1 specifically transforms hematopoietic stem cells through fusion of the entire Evi-1 sequence to AML1." in: **Leukemia**, Vol. 22, Issue 6, pp. 1241-9, (2008) ([PubMed](#)).

Images



Western Blotting

Image 1. WB Suggested Anti-PTBP2 Antibody Titration:
1.25ug/ml Positive Control: HepG2 cell lysate