



[Go to Product page](#)

Datasheet for ABIN2776550
anti-ELAVL4 antibody (N-Term)

1 Image

Overview

Quantity:	100 µL
Target:	ELAVL4
Binding Specificity:	N-Term
Reactivity:	Human, Rat, Mouse, Zebrafish (Danio rerio), Cow, Dog, Guinea Pig, Horse, Rabbit
Host:	Rabbit
Clonality:	Polyclonal
Conjugate:	This ELAVL4 antibody is un-conjugated
Application:	Western Blotting (WB)

Product Details

Immunogen:	The immunogen is a synthetic peptide directed towards the N terminal region of human ELAVL4
Sequence:	MQTGATTTDDS KTNLIVNYLP QNMTQEEFRS LFGSIGEIES CKLVRDKITG
Predicted Reactivity:	Cow: 93%, Dog: 93%, Guinea Pig: 93%, Horse: 93%, Human: 100%, Mouse: 93%, Rabbit: 93%, Rat: 93%, Zebrafish: 92%
Characteristics:	This is a rabbit polyclonal antibody against ELAVL4. It was validated on Western Blot using a cell lysate as a positive control.
Purification:	Affinity Purified

Target Details

Target:	ELAVL4
---------	--------

Target Details

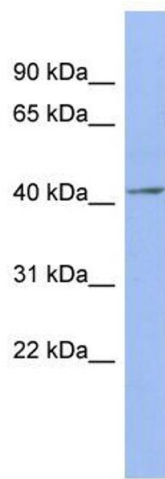
Alternative Name:	ELAVL4 (ELAVL4 Products)
Background:	<p>ELAVL4 may play a role in neuron-specific RNA processing. ELAVL4 protects CDKN1A mRNA from decay by binding to its 3'-UTR. By similarity, ELAVL4 binds to AU-rich sequences (AREs) of target mRNAs, including VEGF and FOS mRNA.</p> <p>Alias Symbols: HUD, PNEM</p> <p>Protein Interaction Partner: PHF20L1, UBC, SUMO1, NFX1, ELAVL2, GAP43, EWSR1, NXF1,</p> <p>Protein Size: 380</p>
Molecular Weight:	42 kDa
Gene ID:	1996
NCBI Accession:	NM_021952 , NP_068771
UniProt:	P26378

Application Details

Application Notes:	Optimal working dilutions should be determined experimentally by the investigator.
Comment:	Antigen size: 380 AA
Restrictions:	For Research Use only

Handling

Format:	Liquid
Concentration:	Lot specific
Buffer:	Liquid. Purified antibody supplied in 1x PBS buffer with 0.09 % (w/v) sodium azide and 2 % sucrose.
Preservative:	Sodium azide
Precaution of Use:	This product contains Sodium azide: a POISONOUS AND HAZARDOUS SUBSTANCE which should be handled by trained staff only.
Handling Advice:	Avoid repeated freeze-thaw cycles.
Storage:	-20 °C
Storage Comment:	For short term use, store at 2-8°C up to 1 week. For long term storage, store at -20°C in small aliquots to prevent freeze-thaw cycles.



Western Blotting

Image 1. WB Suggested Anti-ELAVL4 Antibody Titration:
0.2-1 ug/ml ELISA Titer: 1:62500 Positive Control: NCI-H226
cell lysate