



Datasheet for ABIN2776552  
**anti-RBM26 antibody (Middle Region)**



[Go to Product page](#)

7 Images

Overview

Quantity:	100 µL
Target:	RBM26
Binding Specificity:	Middle Region
Reactivity:	Human, Mouse, Rat, Cow, Dog, Horse, Pig, Rabbit, Zebrafish (Danio rerio)
Host:	Rabbit
Clonality:	Polyclonal
Conjugate:	This RBM26 antibody is un-conjugated
Application:	Western Blotting (WB)

Product Details

Immunogen:	The immunogen is a synthetic peptide directed towards the middle region of human RBM26
Sequence:	PAALKAAQKT LLVSTSAVDN NEAQKKKQEA LKLQDVRKR KQEILEKHIE
Predicted Reactivity:	Cow: 100%, Dog: 100%, Horse: 100%, Human: 100%, Mouse: 100%, Pig: 100%, Rabbit: 100%, Rat: 100%, Zebrafish: 79%
Characteristics:	This is a rabbit polyclonal antibody against RBM26. It was validated on Western Blot using a cell lysate as a positive control.
Purification:	Affinity Purified

Target Details

Target:	RBM26
---------	-------

## Target Details

---

Alternative Name:	RBM26 ( <a href="#">RBM26 Products</a> )
Background:	<p>RBM26 contains 1 C3H1-type zinc finger and 2 RRM (RNA recognition motif) domains. The function of RBM26 remains unknown.</p> <p>Alias Symbols: ARRS2, SE70-2, ZC3H17, PR01777, C13orf10, RP11-255E21.1</p> <p>Protein Interaction Partner: NCK2, RPA3, RPA2, RPA1, Dlg4, PPP1CA, UBC, ATXN1, CRCP, RAB3GAP2, HINFP, HNRNPA1, SUMO2, KBTBD7,</p> <p>Protein Size: 558</p>
Molecular Weight:	61 kDa
Gene ID:	64062
NCBI Accession:	<a href="#">NM_022118</a>
UniProt:	<a href="#">Q5T8P6</a>

## Application Details

---

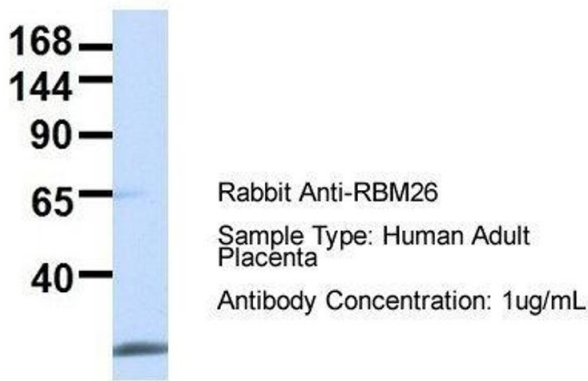
Application Notes:	Optimal working dilutions should be determined experimentally by the investigator.
Comment:	Antigen size: 558 AA
Restrictions:	For Research Use only

## Handling

---

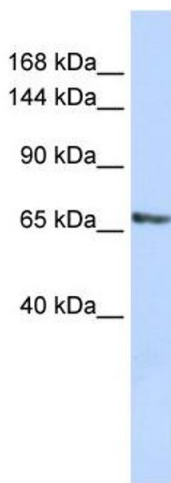
Format:	Liquid
Concentration:	Lot specific
Buffer:	Liquid. Purified antibody supplied in 1x PBS buffer with 0.09 % (w/v) sodium azide and 2 % sucrose.
Preservative:	Sodium azide
Precaution of Use:	This product contains Sodium azide: a POISONOUS AND HAZARDOUS SUBSTANCE which should be handled by trained staff only.
Handling Advice:	Avoid repeated freeze-thaw cycles.
Storage:	-20 °C
Storage Comment:	For short term use, store at 2-8°C up to 1 week. For long term storage, store at -20°C in small aliquots to prevent freeze-thaw cycles.

## RBM26



### Western Blotting

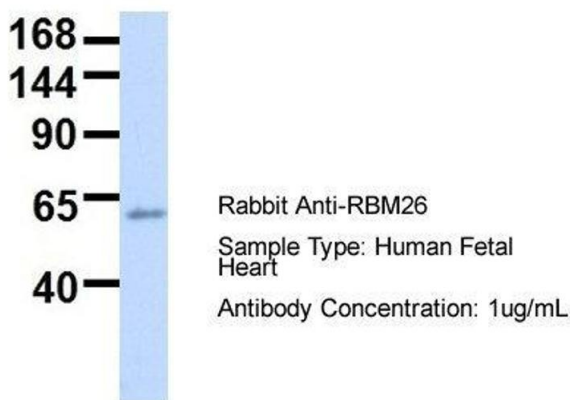
**Image 1.** Host: Rabbit Target Name: RBM26 Sample Type: Human Adult Placenta Antibody Dilution: 1.0ug/ml



### Western Blotting

**Image 2.** WB Suggested Anti-RBM26 Antibody Titration: 0.2-1 ug/ml ELISA Titer: 1:62500 Positive Control: HepG2 cell lysate There is BioGPS gene expression data showing that RBM26 is expressed in HepG2

## RBM26



### Western Blotting

**Image 3.** Host: Rabbit Target Name: RBM26 Sample Type: Human Fetal Heart Antibody Dilution: 1.0ug/ml

Please check the [product details page](#) for more images. Overall 7 images are available for ABIN2776552.