

Datasheet for ABIN2776553
anti-EIF4H antibody (C-Term)[Go to Product page](#)

4 Images

Overview

Quantity:	100 µL
Target:	EIF4H
Binding Specificity:	C-Term
Reactivity:	Human, Mouse, Rat, Dog, Horse, Cow, Guinea Pig, Rabbit
Host:	Rabbit
Clonality:	Polyclonal
Conjugate:	This EIF4H antibody is un-conjugated
Application:	Western Blotting (WB)

Product Details

Immunogen:	The immunogen is a synthetic peptide directed towards the C terminal region of human EIF4H
Sequence:	TEEERAQRPR LQLKPRTVAT PLNQVANPNS AIFGGARPRE EVVQKEQE
Predicted Reactivity:	Cow: 93%, Dog: 93%, Guinea Pig: 93%, Horse: 93%, Human: 100%, Mouse: 100%, Rabbit: 93%, Rat: 100%
Characteristics:	This is a rabbit polyclonal antibody against EIF4H. It was validated on Western Blot using a cell lysate as a positive control.
Purification:	Affinity Purified

Target Details

Target:	EIF4H
---------	-------

Target Details

Alternative Name:	EIF4H (EIF4H Products)
Background:	<p>EIF4H is one of the translation initiation factors, which functions to stimulate the initiation of protein synthesis at the level of mRNA utilization. This gene is deleted in Williams syndrome, a multisystem developmental disorder caused by the deletion of contiguous genes at 7q11.23. Alternative splicing of this gene generates 2 transcript variants. This gene encodes one of the translation initiation factors, which functions to stimulate the initiation of protein synthesis at the level of mRNA utilization. This gene is deleted in Williams syndrome, a multisystem developmental disorder caused by the deletion of contiguous genes at 7q11.23. Alternative splicing of this gene generates 2 transcript variants.</p> <p>Alias Symbols: KIAA0038, WBSCR1, WSCR1, eIF-4H</p> <p>Protein Interaction Partner: LNX1, C11orf68, UBC, GINS2, MAT2B, AHSA1, NDRG1, RPS6KA1, PGD, GLA, G6PD, EIF5, EEF2, CASP7, FN1, MRPL44, MRPL9, PUF60, NUDT21, HNRNPA0, SYNCRIP, HNRNPDL, EIF3A, TRA2B, SRSF3, RBMS2, ICT1, EIF4G2, EIF4E, EIF4A1, DGKQ, AI837181,</p> <p>Protein Size: 248</p>
Molecular Weight:	27 kDa
Gene ID:	7458
NCBI Accession:	NM_022170 , NP_071496
UniProt:	Q15056
Pathways:	SARS-CoV-2 Protein Interactome

Application Details

Application Notes:	Optimal working dilutions should be determined experimentally by the investigator.
Comment:	Antigen size: 248 AA
Restrictions:	For Research Use only

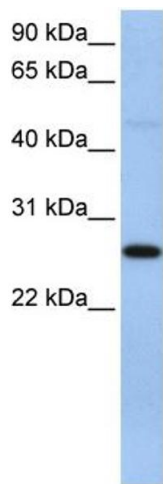
Handling

Format:	Liquid
Concentration:	Lot specific
Buffer:	Liquid. Purified antibody supplied in 1x PBS buffer with 0.09 % (w/v) sodium azide and 2 % sucrose.

Handling

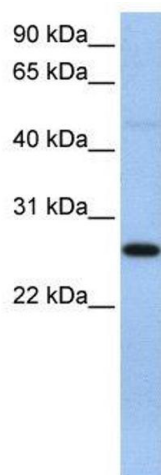
Preservative:	Sodium azide
Precaution of Use:	This product contains Sodium azide: a POISONOUS AND HAZARDOUS SUBSTANCE which should be handled by trained staff only.
Handling Advice:	Avoid repeated freeze-thaw cycles.
Storage:	-20 °C
Storage Comment:	For short term use, store at 2-8°C up to 1 week. For long term storage, store at -20°C in small aliquots to prevent freeze-thaw cycles.

Images



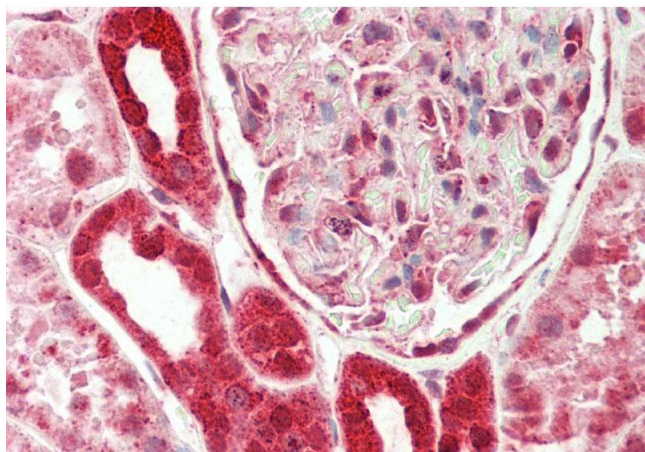
Western Blotting

Image 1. WB Suggested Anti-EIF4H Antibody Titration: 0.2-1 ug/ml ELISA Titer: 1:62500 Positive Control: 721_B cell lysate EIF4H is supported by BioGPS gene expression data to be expressed in 721_B



Western Blotting

Image 2. WB Suggested Anti-EIF4H Antibody Titration: 0.2-1 µg/mL ELISA Titer: 1::2500 Positive Control: 21_B cell lysate EIF4H is supported by BioGPS gene expression data to be expressed in 721_B



Immunohistochemistry

Image 3. Rabbit Anti-EIF4H antibody Formalin Fixed Paraffin Embedded Tissue: Human Kidney Primary antibody Concentration: 1:200 Secondary Antibody: Donkey anti-Rabbit-Cy3 Secondary Antibody Concentration: 1:200 Magnification: 20x Exposure Time: 0.5-2.0sec

Please check the [product details page](#) for more images. Overall 4 images are available for ABIN2776553.