



[Go to Product page](#)

Datasheet for ABIN2776558
anti-MTHFSD antibody (N-Term)

2 Images

Overview

Quantity:	100 µL
Target:	MTHFSD
Binding Specificity:	N-Term
Reactivity:	Human, Mouse, Dog, Cow, Horse, Rabbit, Guinea Pig, Zebrafish (Danio rerio), Pig, Rat
Host:	Rabbit
Clonality:	Polyclonal
Conjugate:	This MTHFSD antibody is un-conjugated
Application:	Western Blotting (WB), Immunohistochemistry (IHC)

Product Details

Immunogen:	The immunogen is a synthetic peptide directed towards the N terminal region of human MTHFSD
Sequence:	EVKVDPDKPL EGVRLVLQS KKTLVPTPR LRTGLFNKIT PPPGATKDIL
Predicted Reactivity:	Cow: 100%, Dog: 100%, Guinea Pig: 90%, Horse: 100%, Human: 100%, Mouse: 100%, Pig: 93%, Rabbit: 92%, Rat: 93%, Zebrafish: 77%
Characteristics:	This is a rabbit polyclonal antibody against MTHFSD. It was validated on Western Blot and immunohistochemistry.
Purification:	Protein A purified

Target Details

Target:	MTHFSD
---------	--------

Target Details

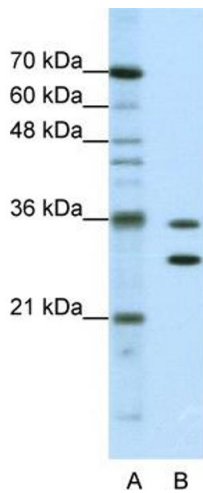
Alternative Name:	MTHFSD (MTHFSD Products)
Background:	The function remains unknown. Protein Interaction Partner: SEC23IP, CUL2, TP63, TP73, TP53, Protein Size: 371
Molecular Weight:	41 kDa
Gene ID:	64779
NCBI Accession:	NM_022764 , NP_073601
UniProt:	Q9H954

Application Details

Application Notes:	Optimal working dilutions should be determined experimentally by the investigator.
Comment:	Antigen size: 371 AA
Restrictions:	For Research Use only

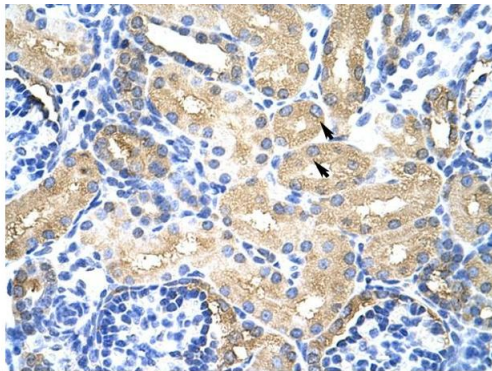
Handling

Format:	Liquid
Concentration:	Lot specific
Buffer:	Liquid. Purified antibody supplied in 1x PBS buffer with 0.09 % (w/v) sodium azide and 2 % sucrose.
Preservative:	Sodium azide
Precaution of Use:	This product contains Sodium azide: a POISONOUS AND HAZARDOUS SUBSTANCE which should be handled by trained staff only.
Handling Advice:	Avoid repeated freeze-thaw cycles.
Storage:	-20 °C
Storage Comment:	For short term use, store at 2-8°C up to 1 week. For long term storage, store at -20°C in small aliquots to prevent freeze-thaw cycles.



Western Blotting

Image 1. WB Suggested Anti-MTHFSD Antibody Titration: 0.625ug/ml ELISA Titer: 1:1562500 Positive Control: Jurkat cell lysate



Rabbit Anti-MTHFSD Antibody
Catalog Number: ARP40987
Lot Number: QC9766
Paraffin Embedded Tissue: Human Kidney
Cells with Positive label: Epithelial cells of renal tubule (Indicated with Arrows)
Antibody Concentration: 4.0-8.0 µg/ml
Magnification: 400X

Immunohistochemistry

Image 2. Rabbit Anti-MTHFSD Antibody Paraffin Embedded Tissue: Human Kidney Cellular Data: Epithelial cells of renal tubule Antibody Concentration: 4.0-8.0 ug/ml Magnification: 400X