

Datasheet for ABIN2776561
anti-Nucleolar Protein 6 antibody (N-Term)[Go to Product page](#)

1 Image

Overview

| | |
|----------------------|--|
| Quantity: | 100 µL |
| Target: | Nucleolar Protein 6 (NOL6) |
| Binding Specificity: | N-Term |
| Reactivity: | Human, Mouse, Rat, Guinea Pig, Cow, Dog, Horse, Rabbit, Saccharomyces cerevisiae |
| Host: | Rabbit |
| Clonality: | Polyclonal |
| Conjugate: | This Nucleolar Protein 6 antibody is un-conjugated |
| Application: | Western Blotting (WB) |

Product Details

| | |
|-----------------------|--|
| Immunogen: | The immunogen is a synthetic peptide directed towards the N terminal region of human NOL6 |
| Sequence: | SRKRTLAEPK AKGLLPVKL SRAELYKEPT NEELNRLRET EILFHSSLLR |
| Predicted Reactivity: | Cow: 93%, Dog: 100%, Guinea Pig: 100%, Horse: 100%, Human: 100%, Mouse: 100%, Rabbit: 93%, Rat: 100%, Yeast: 90% |
| Characteristics: | This is a rabbit polyclonal antibody against NOL6. It was validated on Western Blot using a cell lysate as a positive control. |
| Purification: | Affinity Purified |

Target Details

| | |
|---------|----------------------------|
| Target: | Nucleolar Protein 6 (NOL6) |
|---------|----------------------------|

Target Details

| | |
|-------------------|---|
| Alternative Name: | NOL6 (NOL6 Products) |
| Background: | <p>NOL6 is a nucleolar RNA-associated protein that is highly conserved between species. RNase treatment of permeabilized cells indicates that the nucleolar localization is RNA dependent. Further studies suggest that the protein is associated with ribosome biogenesis through an interaction with pre-rRNA primary transcripts. The nucleolus is a dense subnuclear membraneless organelle that assembles around clusters of rRNA genes and functions in ribosome biogenesis. This gene encodes a nucleolar RNA-associated protein that is highly conserved between species. RNase treatment of permeabilized cells indicates that the nucleolar localization is RNA dependent. Further studies suggest that the protein is associated with ribosome biogenesis through an interaction with pre-rRNA primary transcripts. Alternative splicing has been observed at this locus and two splice variants encoding distinct isoforms have been identified.</p> <p>Alias Symbols: FLJ21959, MGC14896, MGC14921, MGC20838, NRAP, UTP22, bA311H10.1</p> <p>Protein Interaction Partner: UBC, SIAH1, LIN28A, RNF2, BMI1, EED, SIRT7, SUMO2, SUMO1, G3BP1,</p> <p>Protein Size: 1146</p> |
| Molecular Weight: | 127 kDa |
| Gene ID: | 65083 |
| NCBI Accession: | NM_022917 , NP_075068 |
| UniProt: | Q9H6R4 |

Application Details

| | |
|--------------------|--|
| Application Notes: | Optimal working dilutions should be determined experimentally by the investigator. |
| Comment: | Antigen size: 1146 AA |
| Restrictions: | For Research Use only |

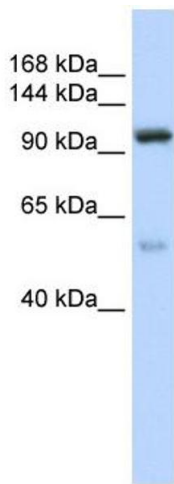
Handling

| | |
|----------------|---|
| Format: | Liquid |
| Concentration: | Lot specific |
| Buffer: | Liquid. Purified antibody supplied in 1x PBS buffer with 0.09 % (w/v) sodium azide and 2 % sucrose. |

Handling

| | |
|--------------------|---|
| Preservative: | Sodium azide |
| Precaution of Use: | This product contains Sodium azide: a POISONOUS AND HAZARDOUS SUBSTANCE which should be handled by trained staff only. |
| Handling Advice: | Avoid repeated freeze-thaw cycles. |
| Storage: | -20 °C |
| Storage Comment: | For short term use, store at 2-8°C up to 1 week. For long term storage, store at -20°C in small aliquots to prevent freeze-thaw cycles. |

Images



Western Blotting

Image 1. WB Suggested Anti-NOL6 Antibody Titration: 0.2-1 ug/ml ELISA Titer: 1:1562500 Positive Control: 721_B cell lysate NOL6 is supported by BioGPS gene expression data to be expressed in 721_B