

Datasheet for ABIN2776572
anti-MRPL24 antibody (N-Term)[Go to Product page](#)

2 Images

Overview

Quantity:	100 µL
Target:	MRPL24
Binding Specificity:	N-Term
Reactivity:	Human, Mouse, Rat, Cow, Dog, Guinea Pig, Horse, Rabbit
Host:	Rabbit
Clonality:	Polyclonal
Conjugate:	This MRPL24 antibody is un-conjugated
Application:	Western Blotting (WB)

Product Details

Immunogen:	The immunogen is a synthetic peptide directed towards the N terminal region of human MRPL24
Sequence:	RRRPVVVEPI SDEDWYLFCG DTVEILEGKD AGKQGKVVQV IRQRNWVVVG
Predicted Reactivity:	Cow: 100%, Dog: 100%, Guinea Pig: 100%, Horse: 100%, Human: 100%, Mouse: 100%, Rabbit: 100%, Rat: 100%
Characteristics:	This is a rabbit polyclonal antibody against MRPL24. It was validated on Western Blot using a cell lysate as a positive control.
Purification:	Affinity Purified

Target Details

Target:	MRPL24
---------	--------

Target Details

Alternative Name: MRPL24 ([MRPL24 Products](#))

Background: Mammalian mitochondrial ribosomal proteins are encoded by nuclear genes and help in protein synthesis within the mitochondrion. Mitochondrial ribosomes (mitoribosomes) consist of a small 28S subunit and a large 39S subunit. They have an estimated 75 % protein to rRNA composition compared to prokaryotic ribosomes, where this ratio is reversed. Another difference between mammalian mitoribosomes and prokaryotic ribosomes is that the latter contain a 5S rRNA. Among different species, the proteins comprising the mitoribosome differ greatly in sequence, and sometimes in biochemical properties, which prevents easy recognition by sequence homology. MRPL24 is a 39S subunit protein which is more than twice the size of its E.coli counterpart (EcoL24). Mammalian mitochondrial ribosomal proteins are encoded by nuclear genes and help in protein synthesis within the mitochondrion. Mitochondrial ribosomes (mitoribosomes) consist of a small 28S subunit and a large 39S subunit. They have an estimated 75 % protein to rRNA composition compared to prokaryotic ribosomes, where this ratio is reversed. Another difference between mammalian mitoribosomes and prokaryotic ribosomes is that the latter contain a 5S rRNA. Among different species, the proteins comprising the mitoribosome differ greatly in sequence, and sometimes in biochemical properties, which prevents easy recognition by sequence homology. This gene encodes a 39S subunit protein which is more than twice the size of its E.coli counterpart (EcoL24). Sequence analysis identified two transcript variants that encode the same protein.

Alias Symbols: FLJ20917, MGC22737, MGC9831, MRP-L18, L24mt, MRP-L24

Protein Interaction Partner: TP53, AURKA, GRSF1, NPM1, MRPL21, C19orf70, MRPL45, TMEM177, MRPL44, MRPL40, MRPS5, TSR1, MRPL39, MRPL51, MRPL37, MRPL4, MRPL2, MRPL13, ERLEC1, MRPL19, TUFG, RPS15, ILF2, ABCC2, APP, CUL3, UBC, Ybx1, ICT1,

Protein Size: 216

Molecular Weight: 25 kDa

Gene ID: 79590

NCBI Accession: [NM_024540](#), [NP_078816](#)

UniProt: [Q96A35](#)

Application Details

Application Notes: Optimal working dilutions should be determined experimentally by the investigator.

Comment: Antigen size: 216 AA

Restrictions: For Research Use only

Handling

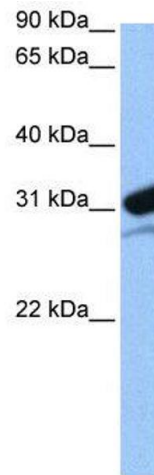
Format:	Liquid
Concentration:	Lot specific
Buffer:	Liquid. Purified antibody supplied in 1x PBS buffer with 0.09 % (w/v) sodium azide and 2 % sucrose.
Preservative:	Sodium azide
Precaution of Use:	This product contains Sodium azide: a POISONOUS AND HAZARDOUS SUBSTANCE which should be handled by trained staff only.
Handling Advice:	Avoid repeated freeze-thaw cycles.
Storage:	-20 °C
Storage Comment:	For short term use, store at 2-8°C up to 1 week. For long term storage, store at -20°C in small aliquots to prevent freeze-thaw cycles.

Images



Western Blotting

Image 1. WB Suggested Anti-MRPL24 Antibody Titration: 0.2-1 ug/ml Positive Control: 721_B cell lysate MRPL24 is supported by BioGPS gene expression data to be expressed in 721_B



Western Blotting

Image 2. WB Suggested Anti-MRPL24 Antibody Titration: 0.2-1 µg/mL Positive Control: 21_B cell lysate MRPL24 is supported by BioGPS gene expression data to be expressed in 721_B