



[Go to Product page](#)

Datasheet for ABIN2776574  
**anti-CPSF7 antibody (C-Term)**

3 Images

### Overview

Quantity:	100 µL
Target:	CPSF7
Binding Specificity:	C-Term
Reactivity:	Human, Mouse, Rat, Dog, Horse, Cow, Guinea Pig, Rabbit
Host:	Rabbit
Clonality:	Polyclonal
Conjugate:	This CPSF7 antibody is un-conjugated
Application:	Western Blotting (WB), Immunohistochemistry (IHC)

### Product Details

Immunogen:	The immunogen is a synthetic peptide directed towards the C terminal region of human FLJ12529
Sequence:	GASGSSSRKR HRSRERSPSR SRESSRRHRD LLHNEDRHDD YFQERNREHE
Predicted Reactivity:	Cow: 100%, Dog: 100%, Guinea Pig: 100%, Horse: 100%, Human: 100%, Mouse: 100%, Rabbit: 100%, Rat: 100%
Characteristics:	This is a rabbit polyclonal antibody against FLJ12529. It was validated on Western Blot and immunohistochemistry.
Purification:	Protein A purified

### Target Details

Target:	CPSF7
---------	-------

## Target Details

---

Alternative Name:	FLJ12529 ( <a href="#">CPSF7 Products</a> )
Background:	The function remains unknown. Alias Symbols: CFIm59, FLJ12529 Protein Interaction Partner: NUDT21, SEC23B, EPM2AIP1, NCK2, SMAD3, CLK2, RUNX1T1, AES, ARMC7, SNRNP25, STAU1, UBC, FXR2, WWOX, RPA3, RPA2, RPA1, SUZ12, EED, EZH2, rev, ITCH, WBP4, APBB1, VCAM1, ITGA4, FN1, DAB2, CSNK2A1, Dlg4, NUP133, ERGIC3, CPSF6, MRPS31, UBAP2L, TPM2, RPS19, OGDH Protein Size: 471
Molecular Weight:	52 kDa
Gene ID:	79869
NCBI Accession:	<a href="#">NM_024811</a> , <a href="#">NP_079087</a>
UniProt:	<a href="#">Q8N684</a>

## Application Details

---

Application Notes:	Optimal working dilutions should be determined experimentally by the investigator.
Comment:	Antigen size: 471 AA
Restrictions:	For Research Use only

## Handling

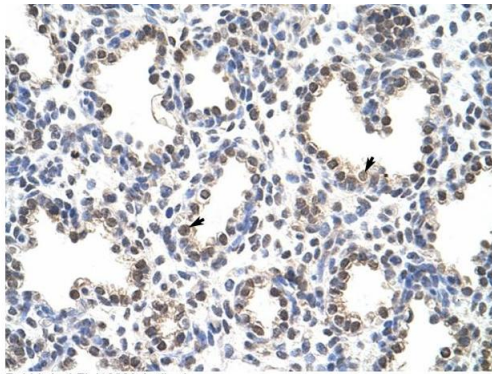
---

Format:	Liquid
Concentration:	Lot specific
Buffer:	Liquid. Purified antibody supplied in 1x PBS buffer with 0.09 % (w/v) sodium azide and 2 % sucrose.
Preservative:	Sodium azide
Precaution of Use:	This product contains Sodium azide: a POISONOUS AND HAZARDOUS SUBSTANCE which should be handled by trained staff only.
Handling Advice:	Avoid repeated freeze-thaw cycles.
Storage:	-20 °C
Storage Comment:	For short term use, store at 2-8°C up to 1 week. For long term storage, store at -20°C in small aliquots to prevent freeze-thaw cycles.



### Western Blotting

**Image 1.** WB Suggested Anti-FLJ12529 Antibody Titration: 1.25ug/ml Positive Control: HepG2 cell lysate CPSF7 is supported by BioGPS gene expression data to be expressed in HepG2



### Immunohistochemistry

**Image 2.** Rabbit Anti-FLJ12529 Antibody Paraffin Embedded Tissue: Human Lung Cellular Data: Alveolar cells Antibody Concentration: 4.0-8.0 ug/ml Magnification: 400X

Rabbit Anti-FLJ12529 Antibody  
 Catalog Number: ARP41012  
 Lot Number: QC10105  
 Paraffin Embedded Tissue: Human Lung  
 Cells with Positive label: Alveolar cells (Indicated with Arrows)  
 Antibody Concentration: 4.0-8.0 µg/ml  
 Magnification: 400X



### Western Blotting

**Image 3.** WB Suggested Anti-FLJ12529 Antibody Titration: 1.25 µg/mL Positive Control: HepG2 cell lysate CPSF7 is supported by BioGPS gene expression data to be expressed in HepG2