



[Go to Product page](#)

Datasheet for ABIN2776576  
**anti-MRM1 antibody (C-Term)**

2 Images

Overview

Quantity:	100 µL
Target:	MRM1
Binding Specificity:	C-Term
Reactivity:	Human, Mouse, Rat, Rabbit, Cow, Guinea Pig, Horse, Dog
Host:	Rabbit
Clonality:	Polyclonal
Conjugate:	This MRM1 antibody is un-conjugated
Application:	Western Blotting (WB), Immunohistochemistry (IHC)

Product Details

Immunogen:	The immunogen is a synthetic peptide directed towards the C terminal region of human MRM1
Sequence:	GTVGCPSTED PQSSEIPIMS CLEFLWERPT LLVLGNEGSG LSQEVQASCQ
Predicted Reactivity:	Cow: 86%, Dog: 93%, Guinea Pig: 100%, Horse: 100%, Human: 100%, Mouse: 91%, Rabbit: 100%, Rat: 100%
Characteristics:	This is a rabbit polyclonal antibody against MRM1. It was validated on Western Blot and immunohistochemistry.
Purification:	Protein A purified

Target Details

Target:	MRM1
---------	------

## Target Details

---

Alternative Name:	MRM1 ( <a href="#">MRM1 Products</a> )
Background:	MRM1 belongs to the RNA methyltransferase trmH family and probably methylates the ribose of guanosine G-2270 in the peptidyl transferase center of the mitochondrial large ribosomal RNA (21S) Protein Interaction Partner: AGTRAP, BMI1, EEF1A1, ICT1, Protein Size: 155
Molecular Weight:	18 kDa
Gene ID:	79922
NCBI Accession:	<a href="#">NM_024864</a>

## Application Details

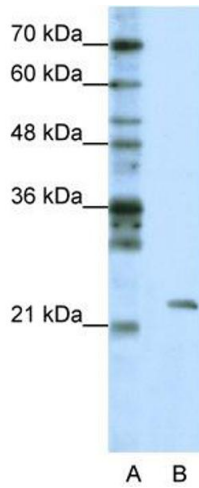
---

Application Notes:	Optimal working dilutions should be determined experimentally by the investigator.
Comment:	Antigen size: 155 AA
Restrictions:	For Research Use only

## Handling

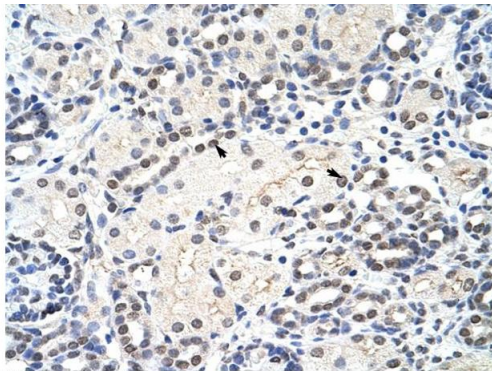
---

Format:	Liquid
Concentration:	Lot specific
Buffer:	Liquid. Purified antibody supplied in 1x PBS buffer with 0.09 % (w/v) sodium azide and 2 % sucrose.
Preservative:	Sodium azide
Precaution of Use:	This product contains Sodium azide: a POISONOUS AND HAZARDOUS SUBSTANCE which should be handled by trained staff only.
Handling Advice:	Avoid repeated freeze-thaw cycles.
Storage:	-20 °C
Storage Comment:	For short term use, store at 2-8°C up to 1 week. For long term storage, store at -20°C in small aliquots to prevent freeze-thaw cycles.



### Western Blotting

**Image 1.** WB Suggested Anti-MRM1 Antibody Titration:  
1.25ug/ml Positive Control: HepG2 cell lysate



Rabbit Anti-MRM1 Antibody  
Catalog Number: ARP41015  
Lot Number: QC10106  
Paraffin Embedded Tissue: Human Kidney  
Cells with Positive label: Epithelial cells of renal tubule (Indicated with Arrows)  
Antibody Concentration: 4.0-8.0 µg/ml  
Magnification: 400X

### Immunohistochemistry

**Image 2.** Rabbit Anti-MRM1 Antibody Paraffin Embedded  
Tissue: Human Kidney Cellular Data: Epithelial cells of renal  
tubule Antibody Concentration: 4.0-8.0 ug/ml Magnification:  
400X