

Datasheet for ABIN2776578
anti-RPF1 antibody (N-Term)[Go to Product page](#)

2 Images

Overview

Quantity:	100 µL
Target:	RPF1
Binding Specificity:	N-Term
Reactivity:	Human, Mouse, Rat, Rabbit, Cow, Guinea Pig, Horse, Saccharomyces cerevisiae, Dog
Host:	Rabbit
Clonality:	Polyclonal
Conjugate:	This RPF1 antibody is un-conjugated
Application:	Western Blotting (WB), Immunohistochemistry (IHC)

Product Details

Immunogen:	The immunogen is a synthetic peptide directed towards the N terminal region of human BXDC5
Sequence:	AAAFPPGFSI SEIKNKQRRH LMFTRWKQQQ RKEKLAACKK LKKEREALGD
Predicted Reactivity:	Cow: 100%, Dog: 93%, Guinea Pig: 100%, Horse: 100%, Human: 100%, Mouse: 100%, Rabbit: 100%, Rat: 100%, Yeast: 79%
Characteristics:	This is a rabbit polyclonal antibody against BXDC5. It was validated on Western Blot using a cell lysate as a positive control.
Purification:	Affinity Purified

Target Details

Target:	RPF1
---------	------

Target Details

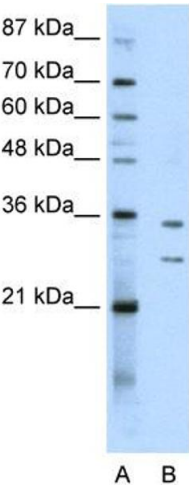
Alternative Name:	BXDC5 (RPF1 Products)
Background:	<p>BXDC5 may be required for ribosome biogenesis.</p> <p>Alias Symbols: DKFZp761G0415, DKFZp761M0215, FLJ12475, RP11-118B23.1, RPF1, BXDC5</p> <p>Protein Interaction Partner: KRTAP10-7, UBC,</p> <p>Protein Size: 349</p>
Molecular Weight:	38 kDa
Gene ID:	80135
NCBI Accession:	NM_025065 , NP_079341
UniProt:	Q9H9Y2

Application Details

Application Notes:	Optimal working dilutions should be determined experimentally by the investigator.
Comment:	Antigen size: 349 AA
Restrictions:	For Research Use only

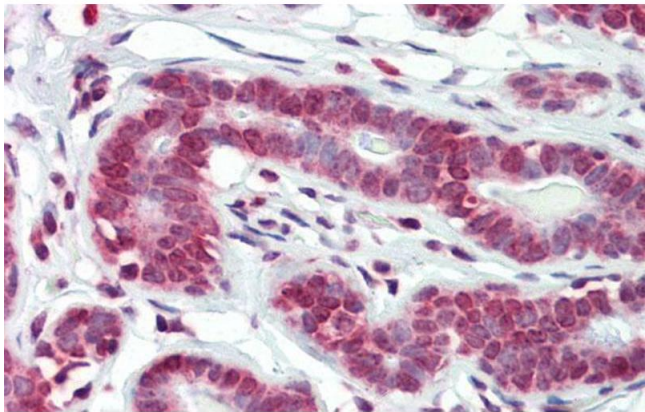
Handling

Format:	Liquid
Concentration:	Lot specific
Buffer:	Liquid. Purified antibody supplied in 1x PBS buffer with 0.09 % (w/v) sodium azide and 2 % sucrose.
Preservative:	Sodium azide
Precaution of Use:	This product contains Sodium azide: a POISONOUS AND HAZARDOUS SUBSTANCE which should be handled by trained staff only.
Handling Advice:	Avoid repeated freeze-thaw cycles.
Storage:	-20 °C
Storage Comment:	For short term use, store at 2-8°C up to 1 week. For long term storage, store at -20°C in small aliquots to prevent freeze-thaw cycles.



Western Blotting

Image 1. WB Suggested Anti-BXDC5 Antibody Titration: 0.2-1 ug/ml Positive Control: K562 cell lysate



Immunohistochemistry

Image 2. Immunohistochemistry with Human Breast tissue at an antibody concentration of 5.0ug/ml using anti-BXDC5 antibody