

Datasheet for ABIN2776580
anti-CPEB4 antibody (N-Term)[Go to Product page](#)

4 Images

Overview

Quantity:	100 µL
Target:	CPEB4
Binding Specificity:	N-Term
Reactivity:	Human, Mouse, Rat, Dog, Guinea Pig, Rabbit, Cow, Horse, Saccharomyces cerevisiae
Host:	Rabbit
Clonality:	Polyclonal
Conjugate:	This CPEB4 antibody is un-conjugated
Application:	Western Blotting (WB)

Product Details

Immunogen:	The immunogen is a synthetic peptide directed towards the N terminal region of human CPEB4
Sequence:	DEILGSEKAK SQQQEQDPL EKQQLSPSPG QEAGILPETE KAKSEENQGD
Predicted Reactivity:	Cow: 93%, Dog: 100%, Guinea Pig: 100%, Horse: 93%, Human: 100%, Mouse: 100%, Rabbit: 100%, Rat: 100%, Yeast: 83%
Characteristics:	This is a rabbit polyclonal antibody against CPEB4. It was validated on Western Blot using a cell lysate as a positive control.
Purification:	Affinity Purified

Target Details

Target:	CPEB4
---------	-------

Target Details

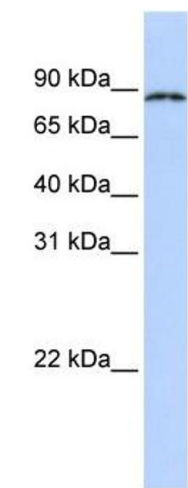
Alternative Name:	CPEB4 (CPEB4 Products)
Background:	The exact function of CPEB4 remains unknown. Alias Symbols: KIAA1673 Protein Interaction Partner: BMI1, SAV1, UBE3C, NDST1, Protein Size: 729
Molecular Weight:	80 kDa
Gene ID:	80315
NCBI Accession:	NM_030627 , NP_085130
UniProt:	Q17RY0

Application Details

Application Notes:	Optimal working dilutions should be determined experimentally by the investigator.
Comment:	Antigen size: 729 AA
Restrictions:	For Research Use only

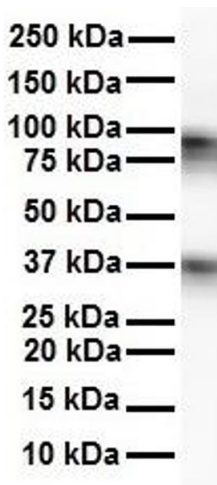
Handling

Format:	Liquid
Concentration:	Lot specific
Buffer:	Liquid. Purified antibody supplied in 1x PBS buffer with 0.09 % (w/v) sodium azide and 2 % sucrose.
Preservative:	Sodium azide
Precaution of Use:	This product contains Sodium azide: a POISONOUS AND HAZARDOUS SUBSTANCE which should be handled by trained staff only.
Handling Advice:	Avoid repeated freeze-thaw cycles.
Storage:	-20 °C
Storage Comment:	For short term use, store at 2-8°C up to 1 week. For long term storage, store at -20°C in small aliquots to prevent freeze-thaw cycles.



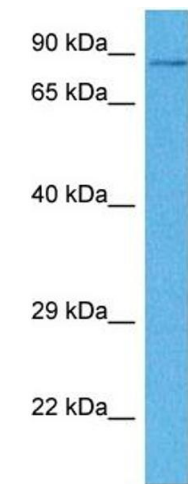
Western Blotting

Image 1. WB Suggested Anti-CPEB4 Antibody Titration: 0.2-1 ug/ml ELISA Titer: 1:312500 Positive Control: Human Lung



Western Blotting

Image 2. WB Suggested Anti-CPEB4 antibody Titration: 1 ug/mL Sample Type: Human Raji



Western Blotting

Image 3. Host: Rabbit Target Name: CPEB4 Sample Tissue: Human DLD1 Whole Cell Antibody Dilution: 1 ug/ml

Please check the [product details page](#) for more images. Overall 4 images are available for ABIN2776580.