



Datasheet for ABIN2776582  
**anti-FIP1L1 antibody (C-Term)**



[Go to Product page](#)

2 Images

Overview

Quantity:	100 µL
Target:	FIP1L1
Binding Specificity:	C-Term
Reactivity:	Human, Mouse, Rat, Cow, Horse, Dog, Guinea Pig, Zebrafish (Danio rerio), Rabbit
Host:	Rabbit
Clonality:	Polyclonal
Conjugate:	This FIP1L1 antibody is un-conjugated
Application:	Western Blotting (WB), Immunohistochemistry (IHC)

Product Details

Immunogen:	The immunogen is a synthetic peptide directed towards the C terminal region of human FIP1L1
Sequence:	EYAERGYERH RASREKEERH RERRHREKKE TRHKSSRSNS RRRHESEEGD
Predicted Reactivity:	Cow: 100%, Dog: 100%, Guinea Pig: 100%, Horse: 100%, Human: 100%, Mouse: 100%, Rabbit: 93%, Rat: 100%, Zebrafish: 86%
Characteristics:	This is a rabbit polyclonal antibody against FIP1L1. It was validated on Western Blot using a cell lysate as a positive control.
Purification:	Affinity Purified

Target Details

Target:	FIP1L1
---------	--------

## Target Details

---

Alternative Name: FIP1L1 ([FIP1L1 Products](#))

---

Background: FIP1L1 is a component of the cleavage and polyadenylation specificity factor (CPSF) complex that plays a key role in pre-mRNA 3'-end formation, recognizing the AAUAAA signal sequence and interacting with poly(A) polymerase and other factors to bring about cleavage and poly(A) addition. FIP1L1 contributes to poly(A) site recognition and stimulates poly(A) addition. It binds to U-rich RNA sequence elements surrounding the poly(A) site. FIP1L1 may act to tether poly(A) polymerase to the CPSF complex.

Alias Symbols: DKFZp586K0717, FLJ33619, Rhe, hFip1

Protein Interaction Partner: ZMYND19, CPSF4, NAA10, SGTA, GOLGA2, STAU1, UBC, WWOX, SUZ12, RNF2, EZH2, PRMT6, PRMT2, CLK2, HDAC9, CSNK2A1, LIG4, WDR33, CPSF2, CPSF3, CPSF1, NUP153, APP, COPS5, HNRNPA1, SRRM2, RNPS1,

Protein Size: 594

---

Molecular Weight: 65 kDa

---

Gene ID: 81608

---

NCBI Accession: [NM\\_030917](#), [NP\\_112179](#)

---

UniProt: [Q6UN15](#)

---

## Application Details

---

Application Notes: Optimal working dilutions should be determined experimentally by the investigator.

---

Comment: Antigen size: 594 AA

---

Restrictions: For Research Use only

---

## Handling

---

Format: Liquid

---

Concentration: Lot specific

---

Buffer: Liquid. Purified antibody supplied in 1x PBS buffer with 0.09 % (w/v) sodium azide and 2 % sucrose.

---

Preservative: Sodium azide

---

Precaution of Use: This product contains Sodium azide: a POISONOUS AND HAZARDOUS SUBSTANCE which should be handled by trained staff only.

---

Handling Advice: Avoid repeated freeze-thaw cycles.

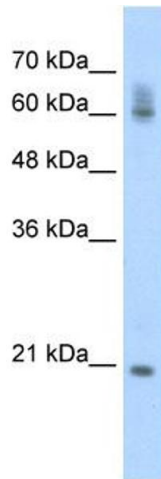
---

## Handling

Storage: -20 °C

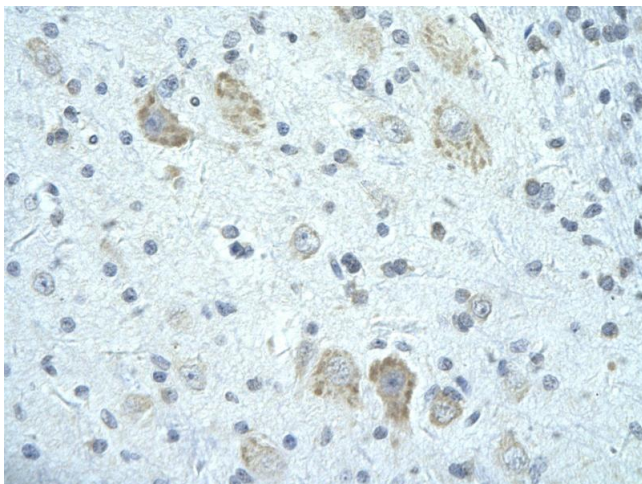
Storage Comment: For short term use, store at 2-8°C up to 1 week. For long term storage, store at -20°C in small aliquots to prevent freeze-thaw cycles.

## Images



### Western Blotting

**Image 1.** WB Suggested Anti-FIP1L1 Antibody Titration: 0.2-1 ug/ml Positive Control: Jurkat cell lysate FIP1L1 is supported by BioGPS gene expression data to be expressed in Jurkat



### Immunohistochemistry

**Image 2.** Rabbit Anti-FIP1L1 antibody Paraffin Embedded Tissue: Human Brain cell Cellular Data: Epithelial cells of renal tubule Antibody Concentration: 4.0-8.0 ug/ml Magnification: 400X