

Datasheet for ABIN2776587  
**anti-RBM4B antibody (C-Term)**[Go to Product page](#)

## 3 Images

## Overview

Quantity:	100 µL
Target:	RBM4B
Binding Specificity:	C-Term
Reactivity:	Human, Mouse, Rat, Pig, Cow, Horse, Rabbit, Dog, Goat, Guinea Pig
Host:	Rabbit
Clonality:	Polyclonal
Conjugate:	This RBM4B antibody is un-conjugated
Application:	Western Blotting (WB), Immunohistochemistry (IHC)

## Product Details

Immunogen:	The immunogen is a synthetic peptide directed towards the C terminal region of human RBM4B
Sequence:	AAAATTSSYY GRDRSPLRRA AAMLPTVGEG YGYGPESELS QASAATRNSL
Predicted Reactivity:	Cow: 100%, Dog: 93%, Goat: 85%, Guinea Pig: 93%, Horse: 100%, Human: 100%, Mouse: 86%, Pig: 100%, Rabbit: 93%, Rat: 86%
Characteristics:	This is a rabbit polyclonal antibody against RBM4B. It was validated on Western Blot and immunohistochemistry.
Purification:	Protein A purified

## Target Details

Target:	RBM4B
---------	-------

## Target Details

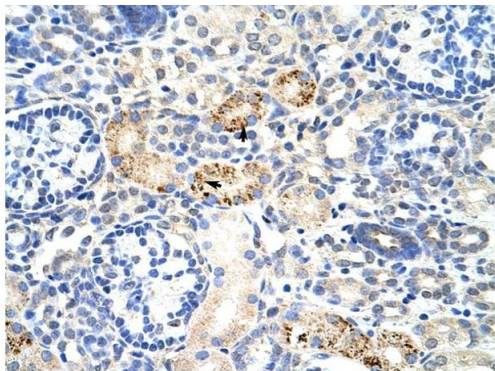
Alternative Name:	RBM4B ( <a href="#">RBM4B Products</a> )
Background:	<p>RBM4B contains 1 CCHC-type zinc finger and 2 RRM (RNA recognition motif) domains. It may play a role in alternative splice site selection during pre-mRNA processing.</p> <p>Alias Symbols: RBM30, RBM4L, ZCRB3B, ZCCHC15</p> <p>Protein Interaction Partner: HNRNPUL1, DZIP3, SUMO2, SUZ12, SMYD1, UBC, APP, CUL3, ELAVL1, APC, MRPS9, POLR2M, HNRNPM,</p> <p>Protein Size: 359</p>
Molecular Weight:	39 kDa
Gene ID:	83759
NCBI Accession:	<a href="#">NM_031492</a> , <a href="#">NP_113680</a>
UniProt:	<a href="#">Q9BQ04</a>
Pathways:	<a href="#">Photoperiodism</a>

## Application Details

Application Notes:	Optimal working dilutions should be determined experimentally by the investigator.
Comment:	Antigen size: 359 AA
Restrictions:	For Research Use only

## Handling

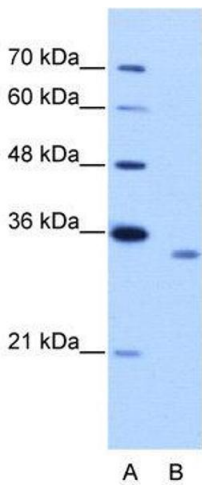
Format:	Liquid
Concentration:	Lot specific
Buffer:	Liquid. Purified antibody supplied in 1x PBS buffer with 0.09 % (w/v) sodium azide and 2 % sucrose.
Preservative:	Sodium azide
Precaution of Use:	This product contains Sodium azide: a POISONOUS AND HAZARDOUS SUBSTANCE which should be handled by trained staff only.
Handling Advice:	Avoid repeated freeze-thaw cycles.
Storage:	-20 °C
Storage Comment:	For short term use, store at 2-8°C up to 1 week. For long term storage, store at -20°C in small aliquots to prevent freeze-thaw cycles.



Rabbit Anti-RBM4B Antibody  
Catalog Number: ARP41039  
Lot Number: QC10124  
Paraffin Embedded Tissue: Human Kidney  
Cells with Positive label: Epithelial cells of renal tubule (Indicated with Arrows)  
Antibody Concentration: 4.0-8.0 µg/ml  
Magnification: 400X

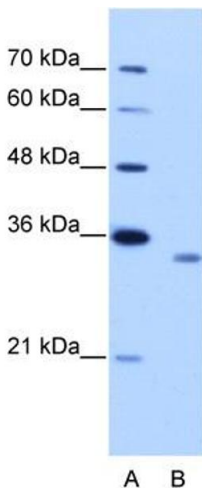
Immunohistochemistry

**Image 1.** Rabbit Anti-RBM4B Antibody Paraffin Embedded  
Tissue: Human Kidney Cellular Data: Epithelial cells of renal  
tubule Antibody Concentration: 4.0-8.0 ug/ml Magnification:  
400X



Western Blotting

**Image 2.** WB Suggested Anti-RBM4B  
Antibody Titration: 2.5 µg/mL  
Positive Control: Jurkat cell lysate  
RBM4B is supported by BioGPS gene expression data to be  
expressed in Jurkat



Western Blotting

**Image 3.** WB Suggested Anti-RBM4B Antibody Titration:  
2.5ug/ml Positive Control: Jurkat cell lysate RBM4B is  
supported by BioGPS gene expression data to be expressed  
in Jurkat