



Datasheet for ABIN2776592
anti-BRD9 antibody (N-Term)



[Go to Product page](#)

3 Images

Overview

Quantity:	100 µL
Target:	BRD9
Binding Specificity:	N-Term
Reactivity:	Human, Mouse, Rat, Dog, Cow, Guinea Pig, Horse, Rabbit, Zebrafish (Danio rerio), Saccharomyces cerevisiae
Host:	Rabbit
Clonality:	Polyclonal
Conjugate:	This BRD9 antibody is un-conjugated
Application:	Western Blotting (WB)

Product Details

Immunogen:	The immunogen is a synthetic peptide directed towards the N-terminal region of Human BRD9
Sequence:	YYDDRS DHER ERHKEK KKKK KKKSEKEKHL DDEERRKRKE EKKRKREHEH
Predicted Reactivity:	Cow: 100%, Dog: 100%, Guinea Pig: 100%, Horse: 100%, Human: 100%, Mouse: 100%, Rabbit: 100%, Rat: 100%, Yeast: 92%, Zebrafish: 75%
Characteristics:	This is a rabbit polyclonal antibody against BRD9. It was validated on Western Blot.
Purification:	Affinity Purified

Target Details

Target:	BRD9
---------	------

Target Details

Alternative Name:	BRD9 (BRD9 Products)
Background:	BRD9 may play a role in chromatin remodeling and regulation of transcription. Alias Symbols: LAVS3040, PRO9856 Protein Interaction Partner: CATIP, SUMO2, Protein Size: 597
Molecular Weight:	65 kDa
Gene ID:	65980
NCBI Accession:	NM_023924 , NP_076413
UniProt:	Q9H8M2

Application Details

Restrictions:	For Research Use only
---------------	-----------------------

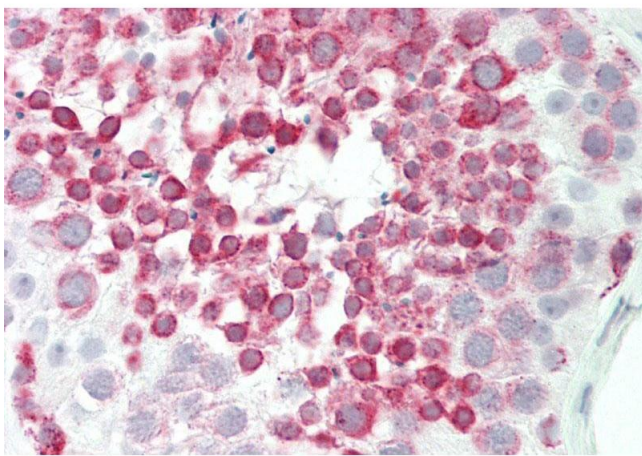
Handling

Format:	Liquid
Concentration:	1 mg/mL
Buffer:	Liquid. Purified antibody supplied in 1x PBS buffer with 0.09 % (w/v) sodium azide and 2 % sucrose.
Preservative:	Sodium azide
Precaution of Use:	This product contains Sodium azide: a POISONOUS AND HAZARDOUS SUBSTANCE which should be handled by trained staff only.
Handling Advice:	Avoid repeat freeze-thaw cycles.
Storage:	-20 °C
Storage Comment:	For short term use, store at 2-8°C up to 1 week. For long term storage, store at -20°C in small aliquots to prevent freeze-thaw cycles.



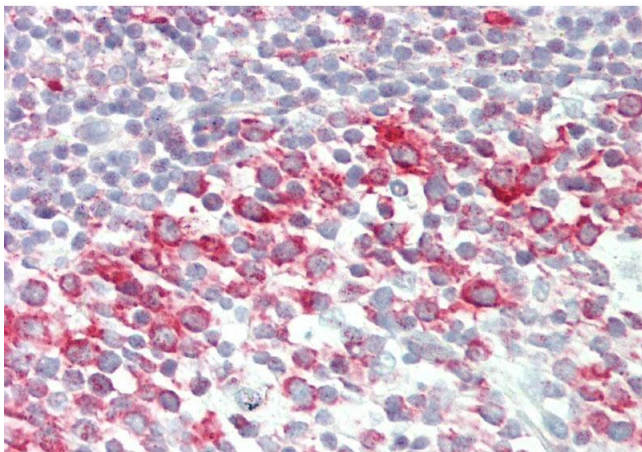
Western Blotting

Image 1.



Immunohistochemistry

Image 2. Rabbit Anti-BRD9 antibody Formalin Fixed Paraffin Embedded Tissue: Human Testis Primary antibody Concentration: 1:100 Secondary Antibody: Donkey anti-Rabbit-Cy3 Secondary Antibody Concentration: 1:200 Magnification: 20x Exposure Time: 0.5-2.0sec



Immunohistochemistry

Image 3. Rabbit Anti-BRD9 antibody Formalin Fixed Paraffin Embedded Tissue: Human Tonsil Primary antibody Concentration: 1:100 Secondary Antibody: Donkey anti-Rabbit-Cy3 Secondary Antibody Concentration: 1:200 Magnification: 20x Exposure Time: 0.5-2.0sec