

Datasheet for ABIN2776596

anti-THO Complex 3 antibody (Middle Region)**3** Images**1** Publication[Go to Product page](#)

Overview

Quantity:	100 µL
Target:	THO Complex 3 (THOC3)
Binding Specificity:	Middle Region
Reactivity:	Human, Mouse, Rat, Dog, Cow, Guinea Pig, Horse, Rabbit, Zebrafish (Danio rerio)
Host:	Rabbit
Clonality:	Polyclonal
Conjugate:	This THO Complex 3 antibody is un-conjugated
Application:	Western Blotting (WB), Immunohistochemistry (IHC)

Product Details

Immunogen:	The immunogen is a synthetic peptide directed towards the middle region of human THOC3
Sequence:	PDGQTIAVGN KDDVVTFIDA KTHRSKAE EQ FKFEVNEISW NNDNNMFFLT
Predicted Reactivity:	Cow: 100%, Dog: 100%, Guinea Pig: 100%, Horse: 100%, Human: 100%, Mouse: 100%, Rabbit: 100%, Rat: 100%, Zebrafish: 86%
Characteristics:	This is a rabbit polyclonal antibody against THOC3. It was validated on Western Blot and immunohistochemistry.
Purification:	Protein A purified

Target Details

Target:	THO Complex 3 (THOC3)
---------	-----------------------

Target Details

Alternative Name:	THOC3 (THOC3 Products)
Background:	<p>THOC3 is part of the TREX (transcription/export) complex, which includes THO2, HPR1, ALY, and UAP56. TEX1 is part of the TREX (transcription/export) complex, which includes THO2 (MIM 300395), HPR1 (MIM 606930), ALY (MIM 604171), and UAP56 (MIM 606390). [supplied by OMIM].</p> <p>Alias Symbols: TEX1</p> <p>Protein Interaction Partner: THOC2, ALYREF, THOC5, DDX39B, SUMO2, NCBP1, UBC, MLKL, BRCA1, ZCRB1, THOC7, THOC6, ZC3H15, ZKSCAN5, THOC1, VIM, UTRN, TTC1, HDGF, TK1, YOD1,</p> <p>Protein Size: 351</p>
Molecular Weight:	39 kDa
Gene ID:	84321
NCBI Accession:	NM_032361 , NP_115737
UniProt:	Q96J01

Application Details

Application Notes:	Optimal working dilutions should be determined experimentally by the investigator.
Comment:	Antigen size: 351 AA
Restrictions:	For Research Use only

Handling

Format:	Liquid
Concentration:	Lot specific
Buffer:	Liquid. Purified antibody supplied in 1x PBS buffer with 0.09 % (w/v) sodium azide and 2 % sucrose.
Preservative:	Sodium azide
Precaution of Use:	This product contains Sodium azide: a POISONOUS AND HAZARDOUS SUBSTANCE which should be handled by trained staff only.
Handling Advice:	Avoid repeated freeze-thaw cycles.
Storage:	-20 °C

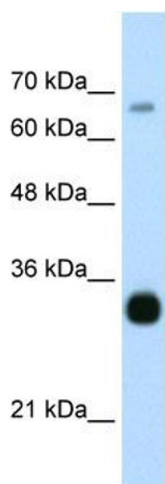
Handling

Storage Comment: For short term use, store at 2-8°C up to 1 week. For long term storage, store at -20°C in small aliquots to prevent freeze-thaw cycles.

Publications

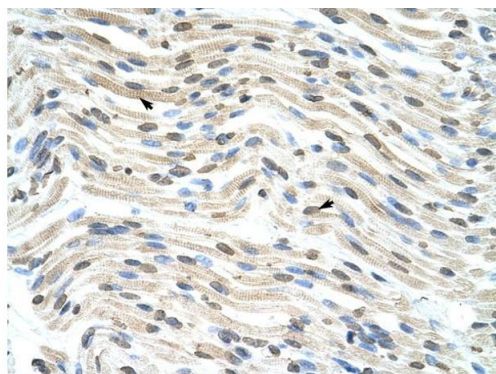
Product cited in: Mehrle, Rosenfelder, Schupp, del Val, Arlt, Hahne, Bechtel, Simpson, Hofmann, Hide, Glatting, Huber, Pepperkok, Poustka, Wiemann: "The LIFEdb database in 2006." in: **Nucleic acids research**, Vol. 34, Issue Database issue, pp. D415-8, (2005) ([PubMed](#)).

Images



Western Blotting

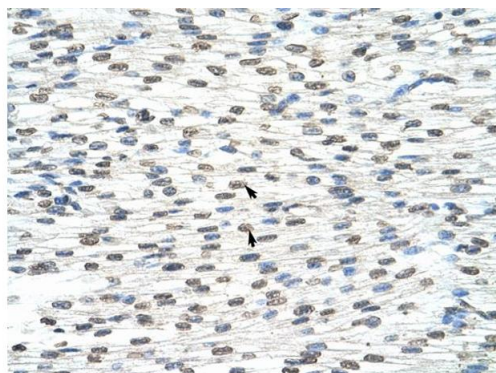
Image 1. WB Suggested Anti-THOC3 Antibody Titration:
0.25ug/ml Positive Control: HepG2 cell lysate



Rabbit Anti-THOC3 Antibody
Catalog Number: ARP41052
Lot Number: QC10164
Paraffin Embedded Tissue: Human Heart
Cells with Positive label: Myocardial cells (Indicated with Arrows)
Antibody Concentration: 4.0-8.0 µg/ml
Magnification: 400X

Immunohistochemistry

Image 2. Rabbit Anti-THOC3 Antibody Paraffin Embedded
Tissue: Human Heart Cellular Data: Myocardial cells
Antibody Concentration: 4.0-8.0 ug/ml Magnification: 400X



Rabbit Anti-THOC3 Antibody
Catalog Number: ARP41052
Lot Number: QC10164
Paraffin Embedded Tissue: Human Heart
Cells with Positive label: Myocardial cells (Indicated with Arrows)
Antibody Concentration: 4.0-8.0 µg/ml
Magnification: 400X

Immunohistochemistry

Image 3. Rabbit Anti-THOC3 Antibody Paraffin Embedded
Tissue: Human Heart Cellular Data: Myocardial cells
Antibody Concentration: 4.0-8.0 ug/ml Magnification: 400X