

Datasheet for ABIN2776603  
**anti-ZCRB1 antibody (N-Term)**



[Go to Product page](#)

1 Image

## Overview

Quantity:	100 µL
Target:	ZCRB1
Binding Specificity:	N-Term
Reactivity:	Human, Mouse, Rat, Cow, Dog, Guinea Pig, Horse, Rabbit, Saccharomyces cerevisiae
Host:	Rabbit
Clonality:	Polyclonal
Conjugate:	This ZCRB1 antibody is un-conjugated
Application:	Western Blotting (WB)

## Product Details

Immunogen:	The immunogen is a synthetic peptide directed towards the N terminal region of human ZCRB1
Sequence:	MSGGLAPSKS TVYVSNLPFS LTNNDLYRIF SKYGKVVKVT IMKDKDTRKS
Predicted Reactivity:	Cow: 100%, Dog: 100%, Guinea Pig: 100%, Horse: 100%, Human: 100%, Mouse: 100%, Rabbit: 100%, Rat: 100%, Yeast: 91%
Characteristics:	This is a rabbit polyclonal antibody against ZCRB1. It was validated on Western Blot using a cell lysate as a positive control.
Purification:	Affinity Purified

## Target Details

Target:	ZCRB1
---------	-------

### Target Details

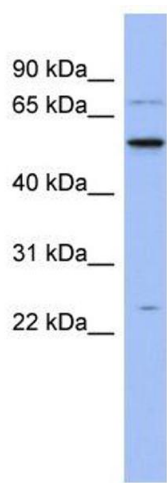
Alternative Name:	ZCRB1 ( <a href="#">ZCRB1 Products</a> )
Background:	<p>Pre-mRNA splicing is catalyzed by the spliceosome. U12-type spliceosome binds U12-type pre-mRNAs and recognizes the 5' splice site and branch-point sequence. U11 and U12 snRNPs are components of U12-type spliceosome and function as a molecular bridge conn</p> <p>Alias Symbols: MADP-1, MADP1, MGC26805, RBM36, ZCCHC19</p> <p>Protein Interaction Partner: THOC3, THOC7, THOC2, PLRG1, ELAVL1, UBC, RNU11, RNU12-2P,</p> <p>Protein Size: 217</p>
Molecular Weight:	24 kDa
Gene ID:	85437
NCBI Accession:	<a href="#">NM_033114</a> , <a href="#">NP_149105</a>
UniProt:	<a href="#">Q8TBF4</a>

### Application Details

Application Notes:	Optimal working dilutions should be determined experimentally by the investigator.
Comment:	Antigen size: 217 AA
Restrictions:	For Research Use only

### Handling

Format:	Liquid
Concentration:	Lot specific
Buffer:	Liquid. Purified antibody supplied in 1x PBS buffer with 0.09 % (w/v) sodium azide and 2 % sucrose.
Preservative:	Sodium azide
Precaution of Use:	This product contains Sodium azide: a POISONOUS AND HAZARDOUS SUBSTANCE which should be handled by trained staff only.
Handling Advice:	Avoid repeated freeze-thaw cycles.
Storage:	-20 °C
Storage Comment:	For short term use, store at 2-8°C up to 1 week. For long term storage, store at -20°C in small aliquots to prevent freeze-thaw cycles.



Western Blotting

**Image 1.** WB Suggested Anti-ZCRB1 Antibody Titration: 0.2-1 ug/ml ELISA Titer: 1:312500 Positive Control: Human Spleen