



Datasheet for ABIN2776604
anti-RBM18 antibody (Middle Region)



[Go to Product page](#)

1 Image

Overview

Quantity:	100 µL
Target:	RBM18
Binding Specificity:	Middle Region
Reactivity:	Human, Cow, Dog, Horse, Mouse, Pig, Rabbit, Rat, Guinea Pig
Host:	Rabbit
Clonality:	Polyclonal
Conjugate:	This RBM18 antibody is un-conjugated
Application:	Western Blotting (WB)

Product Details

Immunogen:	The immunogen is a synthetic peptide directed towards the middle region of human RBM18
Sequence:	VRWAHAQVQR YDHNKNDKIL PISLEPSSST EPTQSNLSVT AKIKAIEAKL
Predicted Reactivity:	Cow: 100%, Dog: 100%, Guinea Pig: 93%, Horse: 100%, Human: 100%, Mouse: 100%, Pig: 100%, Rabbit: 100%, Rat: 100%
Characteristics:	This is a rabbit polyclonal antibody against RBM18. It was validated on Western Blot.
Purification:	Affinity Purified

Target Details

Target:	RBM18
Alternative Name:	RBM18 (RBM18 Products)

Target Details

Background: The function of RBM18 remains unknown.
Alias Symbols: MGC2734
Protein Interaction Partner: TMEM27, GCNT3, TAP2, NDUFAB1, EPHA3,
Protein Size: 190

Molecular Weight: 22 kDa

Gene ID: 92400

NCBI Accession: [NM_033117](#), [NP_149108](#)

UniProt: [Q96H35](#)

Application Details

Application Notes: Optimal working dilutions should be determined experimentally by the investigator.

Comment: Antigen size: 190 AA

Restrictions: For Research Use only

Handling

Format: Liquid

Concentration: Lot specific

Buffer: Liquid. Purified antibody supplied in 1x PBS buffer with 0.09 % (w/v) sodium azide and 2 % sucrose.

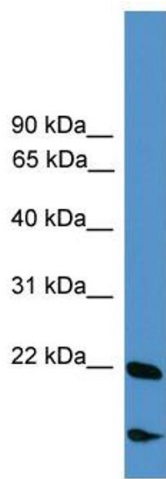
Preservative: Sodium azide

Precaution of Use: This product contains Sodium azide: a POISONOUS AND HAZARDOUS SUBSTANCE which should be handled by trained staff only.

Handling Advice: Avoid repeated freeze-thaw cycles.

Storage: -20 °C

Storage Comment: For short term use, store at 2-8°C up to 1 week. For long term storage, store at -20°C in small aliquots to prevent freeze-thaw cycles.



Western Blotting

Image 1. WB Suggested Anti-RBM18 Antibody Titration:
0.2-1 ug/ml ELISA Titer: 1:312500 Positive Control:
COLO205 cell lysate