

Datasheet for ABIN2776606
anti-LARP1 antibody (N-Term)[Go to Product page](#)

1 Image

1 Publication

Overview

Quantity:	100 µL
Target:	LARP1
Binding Specificity:	N-Term
Reactivity:	Human, Rabbit
Host:	Rabbit
Clonality:	Polyclonal
Conjugate:	This LARP1 antibody is un-conjugated
Application:	Western Blotting (WB)

Product Details

Immunogen:	The immunogen is a synthetic peptide directed towards the N terminal region of human LARP1
Sequence:	KGEPGPNDVR GGEPDGSARR PRPPCAKPHK EGTGQQERES PRPLQLPGAE
Predicted Reactivity:	Human: 100%, Rabbit: 93%
Characteristics:	This is a rabbit polyclonal antibody against LARP1. It was validated on Western Blot using a cell lysate as a positive control.
Purification:	Affinity Purified

Target Details

Target:	LARP1
Alternative Name:	LARP1 (LARP1 Products)

Target Details

Background:	<p>LARP1 belongs to the LARP family and it contains 1 HTH La-type RNA-binding domain. The exact function of LARP1 remains unknown.</p> <p>Alias Symbols: KIAA0731, LARP, MGC19556</p> <p>Protein Interaction Partner: CCDC155, AURKA, IVNS1ABP, UBC, LIN28A, SUZ12, RNF2, EZH2, EIF3L, EIF3K, EIF3C, EIF3A, RPS3A, RPS29, RPS18, RPS16, RPS14, RPS13, RPS12, RPS10, RPS9, RPS8, RPS5, RPS4X, RPS3, EIF3E, TARDBP, YWHAB, SRPK1, CLK3, YWHAE, SOX2, ITGA4, CSNK2A1, BARD1, PAXIP1, ECT</p> <p>Protein Size: 1096</p>
Molecular Weight:	123 kDa
Gene ID:	23367
NCBI Accession:	NM_033551 , NP_291029
UniProt:	Q6PKG0
Pathways:	SARS-CoV-2 Protein Interactome , The Global Phosphorylation Landscape of SARS-CoV-2 Infection

Application Details

Application Notes:	Optimal working dilutions should be determined experimentally by the investigator.
Comment:	Antigen size: 1096 AA
Restrictions:	For Research Use only

Handling

Format:	Liquid
Concentration:	Lot specific
Buffer:	Liquid. Purified antibody supplied in 1x PBS buffer with 0.09 % (w/v) sodium azide and 2 % sucrose.
Preservative:	Sodium azide
Precaution of Use:	This product contains Sodium azide: a POISONOUS AND HAZARDOUS SUBSTANCE which should be handled by trained staff only.
Handling Advice:	Avoid repeated freeze-thaw cycles.
Storage:	-20 °C

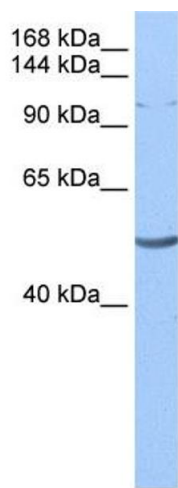
Handling

Storage Comment: For short term use, store at 2-8°C up to 1 week. For long term storage, store at -20°C in small aliquots to prevent freeze-thaw cycles.

Publications

Product cited in: Takeshita, Ichikawa, Nitta, Goyama, Asai, Ogawa, Chiba, Kurokawa: "AML1-Evi-1 specifically transforms hematopoietic stem cells through fusion of the entire Evi-1 sequence to AML1." in: **Leukemia**, Vol. 22, Issue 6, pp. 1241-9, (2008) ([PubMed](#)).

Images



Western Blotting

Image 1. WB Suggested Anti-LAntibody Titration: 0.2-1 ug/ml Positive Control: 721_B cell lysate Lis strongly supported by BioGPS gene expression data to be expressed in Human 721_B cells