

Datasheet for ABIN2776611  
**anti-SRSF10 antibody (C-Term)**[Go to Product page](#)

## 4 Images

## Overview

Quantity:	100 µL
Target:	SRSF10
Binding Specificity:	C-Term
Reactivity:	Human, Mouse, Rat, Guinea Pig, Rabbit, Horse
Host:	Rabbit
Clonality:	Polyclonal
Conjugate:	This SRSF10 antibody is un-conjugated
Application:	Western Blotting (WB), Immunohistochemistry (IHC)

## Product Details

Immunogen:	The immunogen is a synthetic peptide directed towards the C terminal region of human FUSIP1
Sequence:	TDSKTHYKSG SRYEKESRKK EPPRSKSQSR SQSRSRSKSR SRSWTSPKSS
Predicted Reactivity:	Guinea Pig: 100%, Horse: 100%, Human: 100%, Mouse: 100%, Rabbit: 100%, Rat: 100%
Characteristics:	This is a rabbit polyclonal antibody against FUSIP1. It was validated on Western Blot and immunohistochemistry.
Purification:	Affinity Purified

## Target Details

Target:	SRSF10
Alternative Name:	FUSIP1 ( <a href="#">SRSF10 Products</a> )

## Target Details

Background:	<p>FUSIP1 is a member of the serine-arginine (SR) family of proteins, which is involved in constitutive and regulated RNA splicing. Members of this family are characterized by N-terminal RNP1 and RNP2 motifs, which are required for binding to RNA, and multiple C-terminal SR/RS repeats, which are important in mediating association with other cellular proteins. This protein can influence splice site selection of adenovirus E1A pre-mRNA. It interacts with the oncoprotein TLS, and abrogates the influence of TLS on E1A pre-mRNA splicing. This gene product is a member of the serine-arginine (SR) family of proteins, which is involved in constitutive and regulated RNA splicing. Members of this family are characterized by N-terminal RNP1 and RNP2 motifs, which are required for binding to RNA, and multiple C-terminal SR/RS repeats, which are important in mediating association with other cellular proteins. This protein can influence splice site selection of adenovirus E1A pre-mRNA. It interacts with the oncoprotein TLS, and abrogates the influence of TLS on E1A pre-mRNA splicing. Alternative splicing of this gene results in at least two transcript variants encoding different isoforms. In addition, transcript variants utilizing alternative polyA sites exist.</p> <p>Alias Symbols: FUSIP2, NSSR, SFRS13, SRp38, SRp40, TASR, TASR1, TASR2, FUSIP1, SFRS13A</p> <p>Protein Interaction Partner: STAU1, WWOX, SUZ12, EED, RNF2, EZH2, HECW2, TRA2B, SRSF4, SRSF1, CSNK2A1, EIF4A3, MAGOH, PAXIP1, BARD1, SAP18, VTN, TCOF1, SRSF6, S100A9, PRKDC, NHP2L1, NFIA, SEPT2, MSH2, IK, EPRS, DHX15, BCAS2, TRIM55, THOC6, ZNF687, SMU1, TRMT112, TRA2A, PHGDH, NCSTN,</p> <p>Protein Size: 262</p>
Molecular Weight:	29 kDa
Gene ID:	10772
NCBI Accession:	<a href="#">NM_054016</a> , <a href="#">NP_473357</a>
UniProt:	<a href="#">O75494</a>
Pathways:	<a href="#">Ribonucleoprotein Complex Subunit Organization</a>

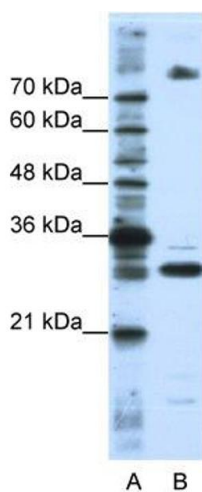
## Application Details

Application Notes:	Optimal working dilutions should be determined experimentally by the investigator.
Comment:	Antigen size: 262 AA
Restrictions:	For Research Use only

## Handling

Format:	Liquid
Concentration:	Lot specific
Buffer:	Liquid. Purified antibody supplied in 1x PBS buffer with 0.09 % (w/v) sodium azide and 2 % sucrose.
Preservative:	Sodium azide
Precaution of Use:	This product contains Sodium azide: a POISONOUS AND HAZARDOUS SUBSTANCE which should be handled by trained staff only.
Handling Advice:	Avoid repeated freeze-thaw cycles.
Storage:	-20 °C
Storage Comment:	For short term use, store at 2-8°C up to 1 week. For long term storage, store at -20°C in small aliquots to prevent freeze-thaw cycles.

## Images



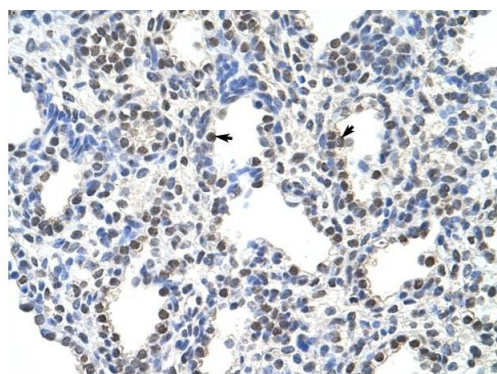
### Western Blotting

#### Image 1. WB Suggested Anti-FUSIP1

Antibody Titration: 0.2-1 µg/mL

Positive Control: HepG2 cell lysate

FUSIP1 is supported by BioGPS gene expression data to be expressed in HepG2



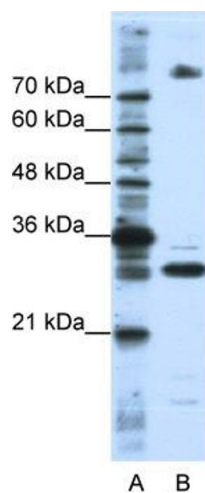
### Immunohistochemistry

#### Image 2. Rabbit Anti-FUSIP1 Antibody Paraffin Embedded

Tissue: Human Lung Cellular Data: Alveolar cells Antibody

Concentration: 4.0-8.0 ug/ml Magnification: 400

Rabbit Anti-FUSIP1 Antibody  
Catalog Number: ARP41082  
Lot Number: QC10000  
Paraffin Embedded Tissue: Human Lung  
Cells with Positive label: Alveolar cells (Indicated with Arrows)  
Antibody Concentration: 4.0-8.0 µg/ml  
Magnification: 400X



#### Western Blotting

**Image 3.** WB Suggested Anti-FUSIP1 Antibody Titration: 0.2-1 ug/ml Positive Control: HepG2 cell lysate FUSIP1 is supported by BioGPS gene expression data to be expressed in HepG2

Please check the [product details page](#) for more images. Overall 4 images are available for ABIN2776611.