

Datasheet for ABIN2776614
anti-EXOSC6 antibody (N-Term)[Go to Product page](#)

3 Images

Overview

Quantity:	100 µL
Target:	EXOSC6
Binding Specificity:	N-Term
Reactivity:	Human, Mouse, Rat, Cow, Pig
Host:	Rabbit
Clonality:	Polyclonal
Conjugate:	This EXOSC6 antibody is un-conjugated
Application:	Western Blotting (WB), Immunohistochemistry (IHC)

Product Details

Immunogen:	The immunogen is a synthetic peptide directed towards the N terminal region of human EXOSC6
Sequence:	MPGDHRRIRG PEESQPPQLY AADEEEAPGT RDPTRLRPVY ARAGLLSQAK
Predicted Reactivity:	Cow: 93%, Human: 100%, Mouse: 88%, Pig: 86%, Rat: 93%
Characteristics:	This is a rabbit polyclonal antibody against EXOSC6. It was validated on Western Blot and immunohistochemistry.
Purification:	Protein A purified

Target Details

Target:	EXOSC6
---------	--------

Target Details

Alternative Name: EXOSC6 ([EXOSC6 Products](#))

Background: EXOSC6 constitutes one of the subunits of the multisubunit particle called exosome, which mediates mRNA degradation. The composition of human exosome is similar to its yeast counterpart. This protein is homologous to the yeast Mtr3 protein. Its exact function is not known, however, it has been shown using a cell-free RNA decay system that the exosome is required for rapid degradation of unstable mRNAs containing AU-rich elements (AREs), but not for poly(A) shortening. The exosome does not recognize ARE-containing mRNAs on its own, but requires ARE-binding proteins that could interact with the exosome and recruit it to unstable mRNAs, thereby promoting their rapid degradation. This gene product constitutes one of the subunits of the multisubunit particle called exosome, which mediates mRNA degradation. The composition of human exosome is similar to its yeast counterpart. This protein is homologous to the yeast Mtr3 protein. Its exact function is not known, however, it has been shown using a cell-free RNA decay system that the exosome is required for rapid degradation of unstable mRNAs containing AU-rich elements (AREs), but not for poly(A) shortening. The exosome does not recognize ARE-containing mRNAs on its own, but requires ARE-binding proteins that could interact with the exosome and recruit it to unstable mRNAs, thereby promoting their rapid degradation.

Alias Symbols: p11, EAP4, MTR3, Mtr3p, hMtr3p

Protein Interaction Partner: CEP250, DCP1B, EXOSC6, CHPF, MIF4GD, XRN1, NDUFA13, MRPL4, EXOSC1, MRPS18B, UPF2, RAB3GAP2, SKIV2L2, GSE1, EXOSC7, EXOSC8, ZFP36, TUFM, EXOSC10, MAN2C1, ESRRA, C1QBP, AICDA, DIS3L, EXOSC4, EXOSC3, CUL3, ELAVL1, HDGF, UBC, EXOSC5, DNAJC30, MOCS3, MPP6, EXO

Protein Size: 272

Molecular Weight: 30 kDa

Gene ID: 118460

NCBI Accession: [NM_058219](#), [NP_478126](#)

UniProt: [Q5RKV6](#)

Pathways: [Regulation of Leukocyte Mediated Immunity](#), [Positive Regulation of Immune Effector Process](#), [Production of Molecular Mediator of Immune Response](#)

Application Details

Application Notes: Optimal working dilutions should be determined experimentally by the investigator.

Comment: Antigen size: 272 AA

Application Details

Restrictions: For Research Use only

Handling

Format: Liquid

Concentration: Lot specific

Buffer: Liquid. Purified antibody supplied in 1x PBS buffer with 0.09 % (w/v) sodium azide and 2 % sucrose.

Preservative: Sodium azide

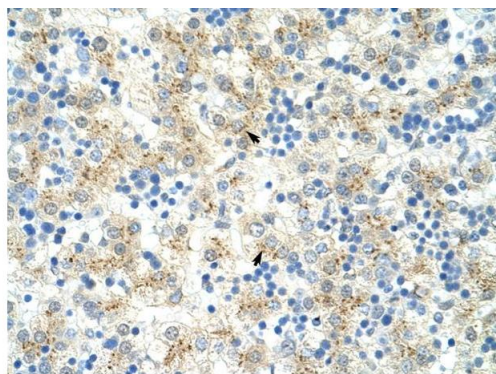
Precaution of Use: This product contains Sodium azide: a POISONOUS AND HAZARDOUS SUBSTANCE which should be handled by trained staff only.

Handling Advice: Avoid repeated freeze-thaw cycles.

Storage: -20 °C

Storage Comment: For short term use, store at 2-8°C up to 1 week. For long term storage, store at -20°C in small aliquots to prevent freeze-thaw cycles.

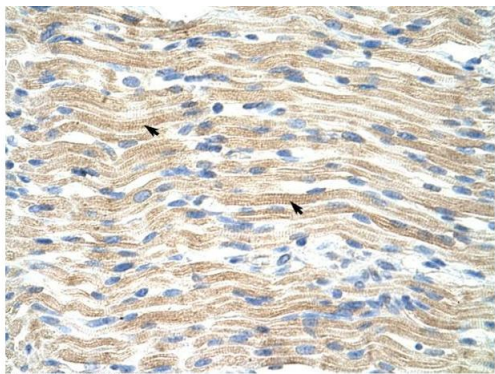
Images



Rabbit Anti-EXOSC6 Antibody
Catalog Number: ARP41087
Lot Number: QC10159
Paraffin Embedded Tissue: Human Liver
Cells with Positive label: Hepatocytes (Indicated with Arrows)
Antibody Concentration: 4.0-8.0 µg/ml
Magnification: 400X

Immunohistochemistry

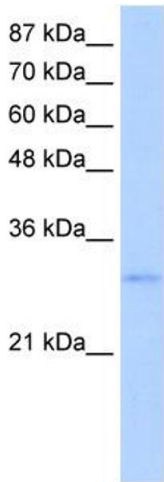
Image 1. Rabbit Anti-EXOSC6 Antibody Paraffin Embedded Tissue: Human Liver Cellular Data: Hepatocytes Antibody Concentration: 4.0-8.0 ug/ml Magnification: 400X



Rabbit Anti-EXOSC6 Antibody
Catalog Number: ARP41087
Lot Number: QC10159
Paraffin Embedded Tissue: Human Muscle
Cells with Positive label: Skeletal muscle cells (Indicated with Arrows)
Antibody Concentration: 4.0-8.0 µg/ml
Magnification: 400X

Immunohistochemistry

Image 2. Rabbit Anti-EXOSC6 Antibody Paraffin Embedded
Tissue: Human Muscle Cellular Data: Skeletal muscle cells
Antibody Concentration: 4.0-8.0 ug/ml Magnification: 400X



Western Blotting

Image 3. WB Suggested Anti-EXOSC6 Antibody Titration:
5.0ug/ml Positive Control: Jurkat cell lysate