

Datasheet for ABIN2776616
anti-SRSF12 antibody (Middle Region)



[Go to Product page](#)

1 Image

1 Publication

Overview

Quantity:	100 µL
Target:	SRSF12
Binding Specificity:	Middle Region
Reactivity:	Human, Cow, Guinea Pig, Horse, Rabbit, Dog, Mouse, Rat
Host:	Rabbit
Clonality:	Polyclonal
Conjugate:	This SRSF12 antibody is un-conjugated
Application:	Western Blotting (WB)

Product Details

Immunogen:	The immunogen is a synthetic peptide directed towards the middle region of human SRp35
Sequence:	RSRSKSLQKR SKSIGKSQSS SPQKQTSSGT KRSRHGRHSD SIARSPCKSP
Predicted Reactivity:	Cow: 100%, Dog: 100%, Guinea Pig: 100%, Horse: 100%, Human: 100%, Mouse: 85%, Rabbit: 100%, Rat: 100%
Characteristics:	This is a rabbit polyclonal antibody against SRp35. It was validated on Western Blot using a cell lysate as a positive control.
Purification:	Affinity Purified

Target Details

Target:	SRSF12
---------	--------

Target Details

Alternative Name:	SRrp35 (SRSF12 Products)
Background:	<p>SRrp35 is a splicing factor that seems to antagonize SR proteins in pre-mRNA splicing regulation.</p> <p>Alias Symbols: FLJ14459, FLJ33484, FLJ41221, RP11-63L7.3, SFRS19, SRrp35, SFRS13B</p> <p>Protein Interaction Partner: SRPK2, SRPK1, CDK6, MAGOH,</p> <p>Protein Size: 261</p>
Molecular Weight:	30 kDa
Gene ID:	135295
NCBI Accession:	NM_080743 , NP_542781
UniProt:	Q8WXF0
Pathways:	Ribonucleoprotein Complex Subunit Organization

Application Details

Application Notes:	Optimal working dilutions should be determined experimentally by the investigator.
Comment:	Antigen size: 261 AA
Restrictions:	For Research Use only

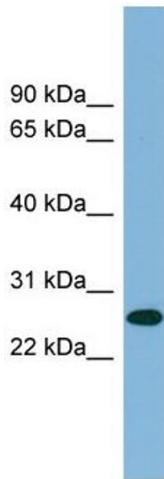
Handling

Format:	Liquid
Concentration:	Lot specific
Buffer:	Liquid. Purified antibody supplied in 1x PBS buffer with 0.09 % (w/v) sodium azide and 2 % sucrose.
Preservative:	Sodium azide
Precaution of Use:	This product contains Sodium azide: a POISONOUS AND HAZARDOUS SUBSTANCE which should be handled by trained staff only.
Handling Advice:	Avoid repeated freeze-thaw cycles.
Storage:	-20 °C
Storage Comment:	For short term use, store at 2-8°C up to 1 week. For long term storage, store at -20°C in small aliquots to prevent freeze-thaw cycles.

Publications

Product cited in: Suzuki, Fujisawa, Ando, Niino, Ohsawa, Shimokata, Ohta: "Alcohol dehydrogenase 2 variant is associated with cerebral infarction and lacunae." in: **Neurology**, Vol. 63, Issue 9, pp. 1711-3, (2004) ([PubMed](#)).

Images



Western Blotting

Image 1. WB Suggested Anti-SRrp35 Antibody Titration: 0.2-1 ug/ml ELISA Titer: 1:312500 Positive Control: PANC1 cell lysate