



[Go to Product page](#)

Datasheet for ABIN2776618

## anti-RAVER1 antibody (Middle Region)

### 1 Image

#### Overview

Quantity:	100 µL
Target:	RAVER1
Binding Specificity:	Middle Region
Reactivity:	Human, Guinea Pig, Mouse, Rabbit, Cow, Dog, Horse, Pig, Rat
Host:	Rabbit
Clonality:	Polyclonal
Conjugate:	This RAVR1 antibody is un-conjugated
Application:	Western Blotting (WB)

#### Product Details

Immunogen:	The immunogen is a synthetic peptide directed towards the middle region of human RAVR1
Sequence:	ALLQLALQTQ GQKKPGILGD SPLGALQPGA QPANPLL GEL PAGGGLPPEL
Predicted Reactivity:	Cow: 93%, Dog: 93%, Guinea Pig: 79%, Horse: 93%, Human: 100%, Mouse: 93%, Pig: 93%, Rabbit: 93%, Rat: 86%
Characteristics:	This is a rabbit polyclonal antibody against RAVR1. It was validated on Western Blot using a cell lysate as a positive control.
Purification:	Affinity Purified

#### Target Details

Target:	RAVER1
---------	--------

## Target Details

---

Alternative Name:	RAVER1 ( <a href="#">RAVER1 Products</a> )
Background:	<p>RAVER1 contains 3 RRM (RNA recognition motif) domains. It cooperates with PTBP1 to modulate regulated alternative splicing events and promotes exon skipping. It cooperates with PTBP1 to modulate switching between mutually exclusive exons during maturation of the TPM1 pre-mRNA.</p> <p>Alias Symbols: KIAA1978</p> <p>Protein Interaction Partner: FUS, NEDD1, CEP76, CEP72, HAUS2, CEP250, AURKB, TUBG1, TP53, PPP2R1A, LGALS3BP, CDKN1A, CDC20, AIRE, STAU1, UBC, RPA3, RPA2, RPA1, WHSC1, VCAM1, FN1, MCAT, DYNLT1, SDHA, PHKB, ABCC1, AK2, ELAVL1, SUMO2, Cnot3, TERF2, PTBP1, VCL, ACTN1, ACTN2,</p> <p>Protein Size: 756</p>
Molecular Weight:	79 kDa
Gene ID:	125950
NCBI Accession:	<a href="#">NM_133452</a> , <a href="#">NP_597709</a>
UniProt:	<a href="#">Q8IY67</a>

## Application Details

---

Application Notes:	Optimal working dilutions should be determined experimentally by the investigator.
Comment:	Antigen size: 756 AA
Restrictions:	For Research Use only

## Handling

---

Format:	Liquid
Concentration:	Lot specific
Buffer:	Liquid. Purified antibody supplied in 1x PBS buffer with 0.09 % (w/v) sodium azide and 2 % sucrose.
Preservative:	Sodium azide
Precaution of Use:	This product contains Sodium azide: a POISONOUS AND HAZARDOUS SUBSTANCE which should be handled by trained staff only.
Handling Advice:	Avoid repeated freeze-thaw cycles.

## Handling

---

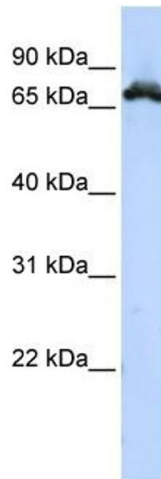
Storage: -20 °C

---

Storage Comment: For short term use, store at 2-8°C up to 1 week. For long term storage, store at -20°C in small aliquots to prevent freeze-thaw cycles.

## Images

---



### Western Blotting

**Image 1.** WB Suggested Anti-RAVER1 Antibody Titration: 0.2-1 ug/ml ELISA Titer: 1:1562500 Positive Control: HepG2 cell lysate