

Datasheet for ABIN2776619
anti-RAVER1 antibody (N-Term)[Go to Product page](#)

2 Images

Overview

Quantity:	100 µL
Target:	RAVER1
Binding Specificity:	N-Term
Reactivity:	Human, Guinea Pig, Rabbit, Cow, Dog, Horse
Host:	Rabbit
Clonality:	Polyclonal
Conjugate:	This RAVR1 antibody is un-conjugated
Application:	Western Blotting (WB), Immunohistochemistry (IHC)

Product Details

Immunogen:	The immunogen is a synthetic peptide directed towards the N terminal region of human RAVR1
Sequence:	VTHRPPLSPK SGAEVEAGDA AERRAPEEEL PPLDPEEIRK RLEHTERQFR
Predicted Reactivity:	Cow: 86%, Dog: 79%, Guinea Pig: 79%, Horse: 86%, Human: 100%, Rabbit: 86%
Characteristics:	This is a rabbit polyclonal antibody against RAVR1. It was validated on Western Blot and immunohistochemistry.
Purification:	Protein A purified

Target Details

Target:	RAVER1
---------	--------

Target Details

Alternative Name:	RAVER1 (RAVER1 Products)
Background:	<p>RAVER1 contains 3 RRM (RNA recognition motif) domains. It cooperates with PTBP1 to modulate regulated alternative splicing events and promotes exon skipping. It cooperates with PTBP1 to modulate switching between mutually exclusive exons during maturation of the TPM1 pre-mRNA.</p> <p>Protein Interaction Partner: FUS, NEDD1, CEP76, CEP72, HAUS2, CEP250, AURKB, TUBG1, TP53, PPP2R1A, LGALS3BP, CDKN1A, CDC20, AIRE, STAU1, UBC, RPA3, RPA2, RPA1, WHSC1, VCAM1, FN1, MCAT, DYNLT1, SDHA, PHKB, ABCC1, AK2, ELAVL1, SUMO2, Cnot3, TERF2, PTBP1, VCL, ACTN1, ACTN2,</p> <p>Protein Size: 606</p>
Molecular Weight:	67 kDa
Gene ID:	125950
NCBI Accession:	NM_133452 , NP_597709
UniProt:	Q8IY67

Application Details

Application Notes:	Optimal working dilutions should be determined experimentally by the investigator.
Comment:	Antigen size: 606 AA
Restrictions:	For Research Use only

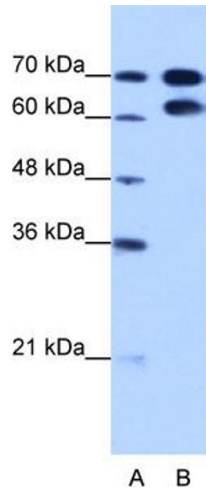
Handling

Format:	Liquid
Concentration:	Lot specific
Buffer:	Liquid. Purified antibody supplied in 1x PBS buffer with 0.09 % (w/v) sodium azide and 2 % sucrose.
Preservative:	Sodium azide
Precaution of Use:	This product contains Sodium azide: a POISONOUS AND HAZARDOUS SUBSTANCE which should be handled by trained staff only.
Handling Advice:	Avoid repeated freeze-thaw cycles.
Storage:	-20 °C

Handling

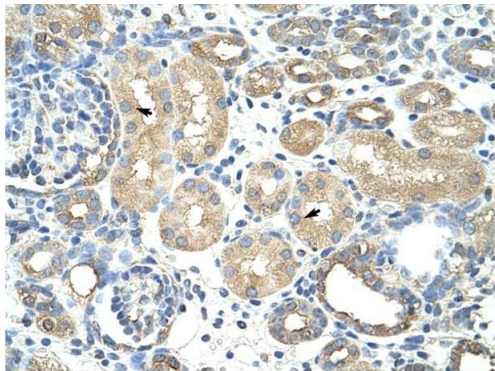
Storage Comment: For short term use, store at 2-8°C up to 1 week. For long term storage, store at -20°C in small aliquots to prevent freeze-thaw cycles.

Images



Western Blotting

Image 1. WB Suggested Anti-RAVER1 Antibody Titration: 1.25ug/ml Positive Control: HepG2 cell lysate



Rabbit Anti-RAVER1 Antibody
Catalog Number: ARP41099
Lot Number: QC10163
Paraffin Embedded Tissue: Human Kidney
Cells with Positive label: Epithelial cells of renal tubule (Indicated with Arrows)
Antibody Concentration: 4.0-8.0 µg/ml
Magnification: 400X

Immunohistochemistry

Image 2. Rabbit Anti-RAVER1Antibody Paraffin Embedded Tissue: Human Kidney Cellular Data: Epithelial cells of renal tubule Antibody Concentration: 4.0-8.0 ug/ml Magnification: 400X