



Datasheet for ABIN2776633
anti-KLHL23 antibody (Middle Region)



[Go to Product page](#)

1 Image

Overview

Quantity:	100 µL
Target:	KLHL23
Binding Specificity:	Middle Region
Reactivity:	Human, Mouse, Rat, Rabbit, Cow, Dog, Guinea Pig, Horse
Host:	Rabbit
Clonality:	Polyclonal
Conjugate:	This KLHL23 antibody is un-conjugated
Application:	Western Blotting (WB)

Product Details

Immunogen:	The immunogen is a synthetic peptide directed towards the middle region of human KLHL23
Sequence:	TYDKVQSYNS DINEWSLITS SPHPEYGLCS VPFENKLYLV GGQTTITECY
Predicted Reactivity:	Cow: 100%, Dog: 100%, Guinea Pig: 100%, Horse: 100%, Human: 100%, Mouse: 100%, Rabbit: 100%, Rat: 100%
Characteristics:	This is a rabbit polyclonal antibody against KLHL23. It was validated on Western Blot using a cell lysate as a positive control.
Purification:	Affinity Purified

Target Details

Target:	KLHL23
---------	--------

Target Details

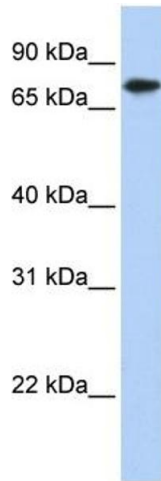
Alternative Name:	KLHL23 (KLHL23 Products)
Background:	This protein mediates protein binding. Alias Symbols: DITHP, FLJ37812, MGC22679, MGC2610 Protein Interaction Partner: UBC, HSP90AA1, DCUN1D1, COPS5, CUL3, TK1, CDKN1A, BNIP3L, ANXA7, ANXA1, USP22, Protein Size: 558
Molecular Weight:	64 kDa
Gene ID:	151230
NCBI Accession:	NM_144711 , NP_653312
UniProt:	Q8NBE8

Application Details

Application Notes:	Optimal working dilutions should be determined experimentally by the investigator.
Comment:	Antigen size: 558 AA
Restrictions:	For Research Use only

Handling

Format:	Liquid
Concentration:	Lot specific
Buffer:	Liquid. Purified antibody supplied in 1x PBS buffer with 0.09 % (w/v) sodium azide and 2 % sucrose.
Preservative:	Sodium azide
Precaution of Use:	This product contains Sodium azide: a POISONOUS AND HAZARDOUS SUBSTANCE which should be handled by trained staff only.
Handling Advice:	Avoid repeated freeze-thaw cycles.
Storage:	-20 °C
Storage Comment:	For short term use, store at 2-8°C up to 1 week. For long term storage, store at -20°C in small aliquots to prevent freeze-thaw cycles.



Western Blotting

Image 1. WB Suggested Anti-KLHL23 Antibody Titration:
0.2-1 ug/ml ELISA Titer: 1:62500 Positive Control:
Transfected 293T