

Datasheet for ABIN2776645  
**anti-RPUSD2 antibody (N-Term)**



[Go to Product page](#)

2 Images

## Overview

Quantity:	100 µL
Target:	RPUSD2
Binding Specificity:	N-Term
Reactivity:	Human, Mouse, Rat, Cow, Dog, Horse, Rabbit, Guinea Pig, Zebrafish (Danio rerio)
Host:	Rabbit
Clonality:	Polyclonal
Conjugate:	This RPUSD2 antibody is un-conjugated
Application:	Western Blotting (WB), Immunohistochemistry (IHC)

## Product Details

Immunogen:	The immunogen is a synthetic peptide directed towards the N terminal region of human RPUSD2
Sequence:	LKDNDFLRNT VHRHEPPVTA EPIRLLAENE DVVVVDKPSS IPVHPCGRFR
Predicted Reactivity:	Cow: 100%, Dog: 93%, Guinea Pig: 100%, Horse: 100%, Human: 100%, Mouse: 100%, Rabbit: 100%, Rat: 100%, Zebrafish: 86%
Characteristics:	This is a rabbit polyclonal antibody against RPUSD2. It was validated on Western Blot and immunohistochemistry.
Purification:	Protein A purified

## Target Details

Target:	RPUSD2
---------	--------

## Target Details

---

Alternative Name:	RPUSD2 ( <a href="#">RPUSD2 Products</a> )
Background:	The function remains unknown. Alias Symbols: C18B11, C15orf19 Protein Interaction Partner: UBC, AARSD1, ACBD3, SH3GLB2, WDR12, LZTFL1, GORASP2, SNF8, EFTUD2, UGDH, TTC1, TBCD, ME1, HARS, GTF2E1, GTF2A1, APP, Protein Size: 545
Molecular Weight:	60 kDa
Gene ID:	27079
NCBI Accession:	<a href="#">NM_152260</a> , <a href="#">NP_689473</a>
UniProt:	<a href="#">Q8IZ73</a>

## Application Details

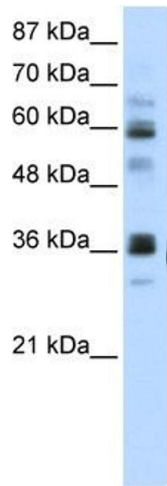
---

Application Notes:	Optimal working dilutions should be determined experimentally by the investigator.
Comment:	Antigen size: 545 AA
Restrictions:	For Research Use only

## Handling

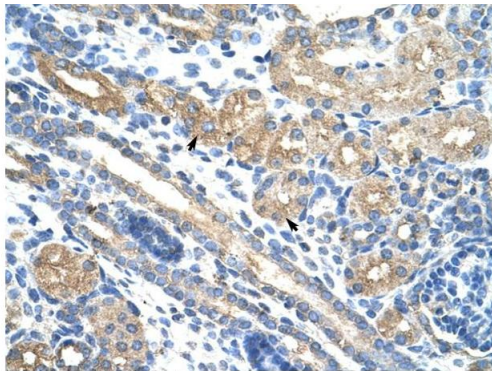
---

Format:	Liquid
Concentration:	Lot specific
Buffer:	Liquid. Purified antibody supplied in 1x PBS buffer with 0.09 % (w/v) sodium azide and 2 % sucrose.
Preservative:	Sodium azide
Precaution of Use:	This product contains Sodium azide: a POISONOUS AND HAZARDOUS SUBSTANCE which should be handled by trained staff only.
Handling Advice:	Avoid repeated freeze-thaw cycles.
Storage:	-20 °C
Storage Comment:	For short term use, store at 2-8°C up to 1 week. For long term storage, store at -20°C in small aliquots to prevent freeze-thaw cycles.



### Western Blotting

**Image 1.** WB Suggested Anti-RPUSD2 Antibody Titration:  
5.0ug/ml Positive Control: HepG2 cell lysate



### Immunohistochemistry

**Image 2.** Rabbit Anti-RPUSD2 Antibody Paraffin Embedded  
Tissue: Human Kidney Cellular Data: Epithelial cells of renal  
tubule Antibody Concentration: 4.0-8.0 ug/ml Magnification:  
400X

Rabbit Anti-RPUSD2 Antibody  
Catalog Number: ARP41140  
Lot Number: QC11022  
Paraffin Embedded Tissue: Human Kidney  
Cells with Positive label: Epithelial cells of renal tubule (Indicated with Arrows)  
Antibody Concentration: 4.0-8.0 µg/ml  
Magnification: 400X