

Datasheet for ABIN2776647

anti-RG9MTD2 antibody (Middle Region)



[Go to Product page](#)

1 Image

Overview

Quantity:	100 µL
Target:	RG9MTD2
Binding Specificity:	Middle Region
Reactivity:	Human, Mouse, Pig, Cow, Rat, Dog, Rabbit, Guinea Pig, Horse
Host:	Rabbit
Clonality:	Polyclonal
Conjugate:	This RG9MTD2 antibody is un-conjugated
Application:	Western Blotting (WB)

Product Details

Immunogen:	The immunogen is a synthetic peptide directed towards the middle region of human RG9MTD2
Sequence:	EDLIYLTSDS PNILKELDES KAYVIGGLVD HNHHKGLTYK QASDYGINHA
Predicted Reactivity:	Cow: 100%, Dog: 100%, Guinea Pig: 93%, Horse: 92%, Human: 100%, Mouse: 79%, Pig: 100%, Rabbit: 93%, Rat: 93%
Characteristics:	This is a rabbit polyclonal antibody against RG9MTD2. It was validated on Western Blot using a cell lysate as a positive control.
Purification:	Protein A purified

Target Details

Target:	RG9MTD2
---------	---------

Target Details

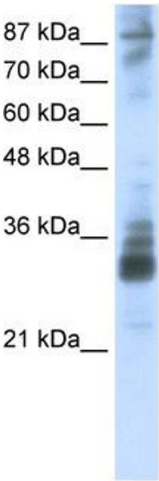
Alternative Name:	RG9MTD2 (RG9MTD2 Products)
Background:	The function remains unknown. Alias Symbols: TRM10, RG9MTD2 Protein Interaction Partner: PPP2R5E, CALU, ARPC5L, AARSD1, ARPC3, SAE1, SH3GL1, PRKACA, ARPC1A, Protein Size: 339
Molecular Weight:	37 kDa
Gene ID:	93587
NCBI Accession:	NM_152292 , NP_689505
UniProt:	Q8TBZ6

Application Details

Application Notes:	Optimal working dilutions should be determined experimentally by the investigator.
Comment:	Antigen size: 339 AA
Restrictions:	For Research Use only

Handling

Format:	Liquid
Concentration:	Lot specific
Buffer:	Liquid. Purified antibody supplied in 1x PBS buffer with 0.09 % (w/v) sodium azide and 2 % sucrose.
Preservative:	Sodium azide
Precaution of Use:	This product contains Sodium azide: a POISONOUS AND HAZARDOUS SUBSTANCE which should be handled by trained staff only.
Handling Advice:	Avoid repeated freeze-thaw cycles.
Storage:	-20 °C
Storage Comment:	For short term use, store at 2-8°C up to 1 week. For long term storage, store at -20°C in small aliquots to prevent freeze-thaw cycles.



Western Blotting

Image 1. WB Suggested Anti-RG9MTD2 Antibody Titration:
2.5ug/ml Positive Control: HepG2 cell lysate