

Datasheet for ABIN2776648
anti-DIS3L2 antibody (N-Term)[Go to Product page](#)

2 Images

Overview

Quantity:	100 µL
Target:	DIS3L2
Binding Specificity:	N-Term
Reactivity:	Human, Mouse, Rat, Dog, Cow, Guinea Pig, Horse, Rabbit, Pig
Host:	Rabbit
Clonality:	Polyclonal
Conjugate:	This DIS3L2 antibody is un-conjugated
Application:	Western Blotting (WB), Immunohistochemistry (IHC)

Product Details

Immunogen:	The immunogen is a synthetic peptide directed towards the N terminal region of human MGC42174
Sequence:	WKVVKPESND KETEAAYESD IPEELCGHHL PQQSLKSYND SPDVIVEAQF
Predicted Reactivity:	Cow: 93%, Dog: 86%, Guinea Pig: 86%, Horse: 86%, Human: 100%, Mouse: 86%, Pig: 93%, Rabbit: 79%, Rat: 86%
Characteristics:	This is a rabbit polyclonal antibody against MGC42174. It was validated on Western Blot and immunohistochemistry.
Purification:	Protein A purified

Target Details

Target:	DIS3L2
---------	--------

Target Details

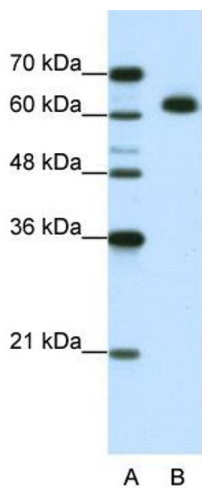
Abstract:	DIS3L2 Products
Background:	The function remains unknown. Alias Symbols: FAM6A, MGC42174 Protein Interaction Partner: RELA, UBC, BMI1, CBX2, CBX4, COPS6, FEZ1, VIM, Protein Size: 619
Molecular Weight:	68 kDa
Gene ID:	129563
NCBI Accession:	NM_152383 , NP_689596
UniProt:	Q8IYB7
Pathways:	Stem Cell Maintenance

Application Details

Application Notes:	Optimal working dilutions should be determined experimentally by the investigator.
Comment:	Antigen size: 619 AA
Restrictions:	For Research Use only

Handling

Format:	Liquid
Concentration:	Lot specific
Buffer:	Liquid. Purified antibody supplied in 1x PBS buffer with 0.09 % (w/v) sodium azide and 2 % sucrose.
Preservative:	Sodium azide
Precaution of Use:	This product contains Sodium azide: a POISONOUS AND HAZARDOUS SUBSTANCE which should be handled by trained staff only.
Handling Advice:	Avoid repeated freeze-thaw cycles.
Storage:	-20 °C
Storage Comment:	For short term use, store at 2-8°C up to 1 week. For long term storage, store at -20°C in small aliquots to prevent freeze-thaw cycles.



Western Blotting

Image 1. WB Suggested Anti-MGC42174 Antibody Titration:
1.25ug/ml ELISA Titer: 1:62500 Positive Control: Jurkat cell lysate



Rabbit Anti-MGC42174 Antibody
Catalog Number: ARP41145
Lot Number: QC9863
Paraffin Embedded Tissue: Human Heart
Cells with Positive label: Myocardial cells (Indicated with Arrows)
Antibody Concentration: 4.0-8.0 µg/ml
Magnification: 400X

Immunohistochemistry

Image 2. Rabbit Anti-MGC42174 Antibody Paraffin
Embedded Tissue: Human Heart Cellular Data: Myocardial
cells Antibody Concentration: 4.0-8.0 ug/ml Magnification:
400X