

Datasheet for ABIN2776650
anti-APOBEC3D antibody (N-Term)



[Go to Product page](#)

2 Images

Overview

Quantity:	100 µL
Target:	APOBEC3D
Binding Specificity:	N-Term
Reactivity:	Human
Host:	Rabbit
Clonality:	Polyclonal
Conjugate:	This APOBEC3D antibody is un-conjugated
Application:	Western Blotting (WB), Immunohistochemistry (IHC)

Product Details

Immunogen:	The immunogen is a synthetic peptide directed towards the N terminal region of human APOBEC3D
Sequence:	SYTWLCYEVK IKRGRSNLLW DTGVFRGPVL PKRQSNHRQE VYFRFENHAE
Predicted Reactivity:	Human: 100%
Characteristics:	This is a rabbit polyclonal antibody against APOBEC3D. It was validated on Western Blot and immunohistochemistry.
Purification:	Affinity Purified

Target Details

Target:	APOBEC3D
---------	----------

Target Details

Alternative Name: [APOBEC3D \(APOBEC3D Products\)](#)

Background: This gene is a member of the cytidine deaminase gene family. It is one of seven related genes or pseudogenes found in a cluster, thought to result from gene duplication, on chromosome 22. Members of the cluster encode proteins that are structurally and functionally related to the C to U RNA-editing cytidine deaminase APOBEC1 and inhibit retroviruses, such as HIV, by deaminating cytosine residues in nascent retroviral cDNA. This gene is a member of the cytidine deaminase gene family. It is one of seven related genes or pseudogenes found in a cluster, thought to result from gene duplication, on chromosome 22. Members of the cluster encode proteins that are structurally and functionally related to the C to U RNA-editing cytidine deaminase APOBEC1 and inhibit retroviruses, such as HIV, by deaminating cytosine residues in nascent retroviral cDNA.

Alias Symbols: ARP6, APOBEC3E, APOBEC3DE

Protein Interaction Partner: FN1, UBC,

Protein Size: 271

Molecular Weight: 30 kDa

Gene ID: 140564

NCBI Accession: [NM_152426](#), [NP_689639](#)

UniProt: [Q96AK3](#)

Application Details

Application Notes: Optimal working dilutions should be determined experimentally by the investigator.

Comment: Antigen size: 271 AA

Restrictions: For Research Use only

Handling

Format: Liquid

Concentration: Lot specific

Buffer: Liquid. Purified antibody supplied in 1x PBS buffer with 0.09 % (w/v) sodium azide and 2 % sucrose.

Preservative: Sodium azide

Precaution of Use: This product contains Sodium azide: a POISONOUS AND HAZARDOUS SUBSTANCE which

Handling

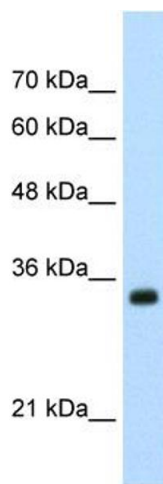
should be handled by trained staff only.

Handling Advice: Avoid repeated freeze-thaw cycles.

Storage: -20 °C

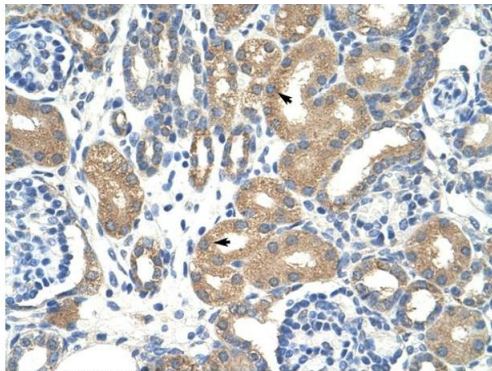
Storage Comment: For short term use, store at 2-8°C up to 1 week. For long term storage, store at -20°C in small aliquots to prevent freeze-thaw cycles.

Images



Western Blotting

Image 1. WB Suggested Anti-APOBEC3D Antibody Titration:
0.2-1 ug/ml Positive Control: HepG2 cell lysate



Rabbit Anti-APOBEC3D Antibody
Catalog Number: ARP41147
Lot Number: QC10701
Paraffin Embedded Tissue: Human Kidney
Cells with Positive label: Epithelial cells of renal tubule (Indicated with Arrows)
Antibody Concentration: 12.0 µg/ml
Magnification: 400X

Immunohistochemistry

Image 2. Rabbit Anti-APOBEC3D Antibody Paraffin
Embedded Tissue: Human Kidney Cellular Data: Epithelial
cells of renal tubule Antibody Concentration: 4.0-8.0 ug/ml
Magnification: 400X