



[Go to Product page](#)

Datasheet for ABIN2776653
anti-DRB1 antibody (N-Term)

1 Image

Overview

Quantity:	100 µL
Target:	DRB1
Binding Specificity:	N-Term
Reactivity:	Mouse, Rat, Dog, Human, Rabbit, Cow, Guinea Pig, Horse
Host:	Rabbit
Clonality:	Polyclonal
Conjugate:	This DRB1 antibody is un-conjugated
Application:	Western Blotting (WB)

Product Details

Immunogen:	The immunogen is a synthetic peptide directed towards the N terminal region of human DRB1
Sequence:	MDEAGSSASG GGF RPGVDSL DEPPNSRIFL VISKYTPESV LRERFSPFGD
Predicted Reactivity:	Cow: 93%, Dog: 100%, Guinea Pig: 100%, Horse: 93%, Human: 100%, Mouse: 100%, Rabbit: 100%, Rat: 100%
Characteristics:	This is a rabbit polyclonal antibody against DRB1. It was validated on Western Blot using a cell lysate as a positive control.
Purification:	Protein A purified

Target Details

Target:	DRB1
---------	------

Target Details

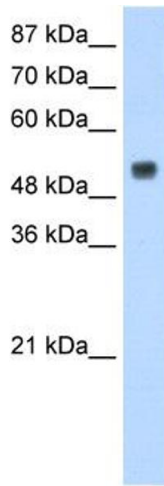
Alternative Name:	DRB1 (DRB1 Products)
Background:	DRB1 is RNA-binding protein with binding specificity for poly(C) and may play an important role in neural development. Alias Symbols: DRB1 Protein Interaction Partner: RBM45, FANCL, MEMO1, TXN2, TRAF1, TARDBP, CAND1, CUL3, UBC, USP21, KEAP1, Protein Size: 328
Molecular Weight:	36 kDa
Gene ID:	129831
NCBI Accession:	NM_152945, NP_694453
Pathways:	TCR Signaling , Positive Regulation of Peptide Hormone Secretion , Production of Molecular Mediator of Immune Response , CXCR4-mediated Signaling Events

Application Details

Application Notes:	Optimal working dilutions should be determined experimentally by the investigator.
Comment:	Antigen size: 328 AA
Restrictions:	For Research Use only

Handling

Format:	Liquid
Concentration:	Lot specific
Buffer:	Liquid. Purified antibody supplied in 1x PBS buffer with 0.09 % (w/v) sodium azide and 2 % sucrose.
Preservative:	Sodium azide
Precaution of Use:	This product contains Sodium azide: a POISONOUS AND HAZARDOUS SUBSTANCE which should be handled by trained staff only.
Handling Advice:	Avoid repeated freeze-thaw cycles.
Storage:	-20 °C
Storage Comment:	For short term use, store at 2-8°C up to 1 week. For long term storage, store at -20°C in small aliquots to prevent freeze-thaw cycles.



Western Blotting

Image 1. WB Suggested Anti-DRB1 Antibody Titration:
1.25ug/ml Positive Control: HepG2 cell lysate