

Datasheet for ABIN2776655
anti-RBM24 antibody (Middle Region)[Go to Product page](#)

2 Images

Overview

Quantity:	100 µL
Target:	RBM24
Binding Specificity:	Middle Region
Reactivity:	Human, Mouse, Zebrafish (Danio rerio), Rat, Cow, Guinea Pig, Horse, Dog
Host:	Rabbit
Clonality:	Polyclonal
Conjugate:	This RBM24 antibody is un-conjugated
Application:	Western Blotting (WB), Immunohistochemistry (IHC)

Product Details

Immunogen:	The immunogen is a synthetic peptide directed towards the middle region of human RBM24
Sequence:	VTAGGYGYAV QQPITAAAPG TAAAAAAAAA AAAAFGQYQP QQLQTDRMQ
Predicted Reactivity:	Cow: 100%, Dog: 79%, Guinea Pig: 100%, Horse: 100%, Human: 100%, Mouse: 100%, Rat: 100%, Zebrafish: 86%
Characteristics:	This is a rabbit polyclonal antibody against RBM24. It was validated on Western Blot using a cell lysate as a positive control.
Purification:	Affinity Purified

Target Details

Target:	RBM24
---------	-------

Target Details

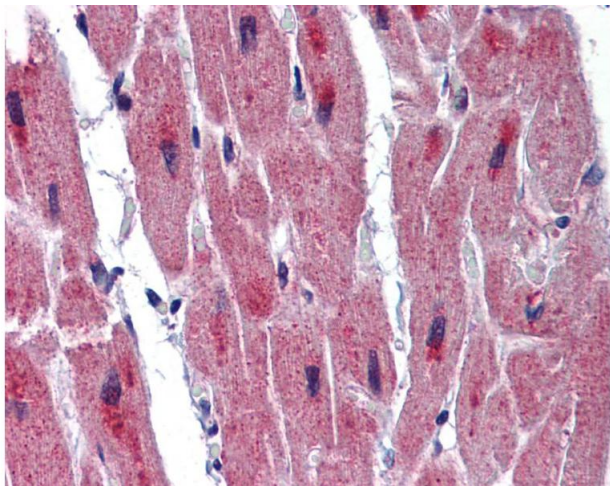
Alternative Name:	RBM24 (RBM24 Products)
Background:	<p>The function of this protein remains unknown.</p> <p>Alias Symbols: FLJ26355, FLJ30829, FLJ37697, RNPC6, dJ259A10.1</p> <p>Protein Interaction Partner: RBFOX1, UBC,</p> <p>Protein Size: 191</p>
Molecular Weight:	19 kDa
Gene ID:	221662
NCBI Accession:	NM_153020 , NP_694565
Pathways:	Regulation of Muscle Cell Differentiation , Skeletal Muscle Fiber Development

Application Details

Application Notes:	Optimal working dilutions should be determined experimentally by the investigator.
Comment:	Antigen size: 191 AA
Restrictions:	For Research Use only

Handling

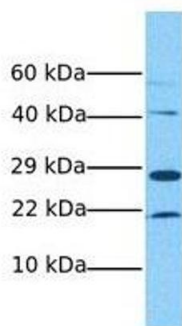
Format:	Liquid
Concentration:	Lot specific
Buffer:	Liquid. Purified antibody supplied in 1x PBS buffer with 0.09 % (w/v) sodium azide and 2 % sucrose.
Preservative:	Sodium azide
Precaution of Use:	This product contains Sodium azide: a POISONOUS AND HAZARDOUS SUBSTANCE which should be handled by trained staff only.
Handling Advice:	Avoid repeated freeze-thaw cycles.
Storage:	-20 °C
Storage Comment:	For short term use, store at 2-8°C up to 1 week. For long term storage, store at -20°C in small aliquots to prevent freeze-thaw cycles.



Immunohistochemistry

Image 1.

RBM24



Western Blotting

Image 2. Host: Rabbit Target Name: RBM24 Sample Tissue: Human MCF7 Antibody Dilution: 1.0ug/ml