

Datasheet for ABIN2776658  
**anti-SLA antibody (N-Term)**[Go to Product page](#)

## 2 Images

## Overview

|                      |   |
|----------------------|---|
| Quantity:            | 100 µL  |
| Target:              | SLA   |
| Binding Specificity: | N-Term  |
| Reactivity:          | Human, Mouse, Rat, Rabbit, Cow, Dog, Guinea Pig, Horse, Zebrafish (Danio rerio) |
| Host:                | Rabbit  |
| Clonality:           | Polyclonal  |
| Conjugate:           | This SLA antibody is un-conjugated  |
| Application:         | Western Blotting (WB), Immunohistochemistry (IHC)                               |

## Product Details

|                       |  |
|-----------------------|--|
| Immunogen:            | The immunogen is a synthetic peptide directed towards the N terminal region of human SLA/LP                            |
| Sequence:             | MDSNNFLGNC GVGEREGRVA SALVARRHYR FIHGIGRSGD ISAVQPKAAG   |
| Predicted Reactivity: | Cow: 100%, Dog: 100%, Guinea Pig: 100%, Horse: 100%, Human: 100%, Mouse: 100%, Rabbit: 100%, Rat: 100%, Zebrafish: 93% |
| Characteristics:      | This is a rabbit polyclonal antibody against SLA/LP. It was validated on Western Blot and immunohistochemistry.        |
| Purification:         | Affinity Purified  |

## Target Details

|         |     |
|---------|-----|
| Target: | SLA |
|---------|-----|

## Target Details

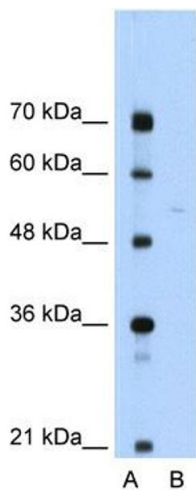
|                   |   |
|-------------------|---|
| Alternative Name: | SLA ( <a href="#">SLA Products</a> )  |
| Background:       | SLA/LP converts O-phosphoseryl-tRNA(Sec) to selenocysteinyl-tRNA(Sec) required for selenoprotein biosynthesis.<br>Alias Symbols: LP, SLA, PCH2D, SLA/LP<br>Protein Interaction Partner: SOX2, gag,<br>Protein Size: 441 |
| Molecular Weight: | 49 kDa  |
| Gene ID:          | 51091   |
| NCBI Accession:   | <a href="#">NM_153825</a> , <a href="#">NP_722547</a>   |
| UniProt:          | <a href="#">A1A4F3</a>  |

## Application Details

|                    |  |
|--------------------|--|
| Application Notes: | Optimal working dilutions should be determined experimentally by the investigator. |
| Comment:           | Antigen size: 441 AA   |
| Restrictions:      | For Research Use only  |

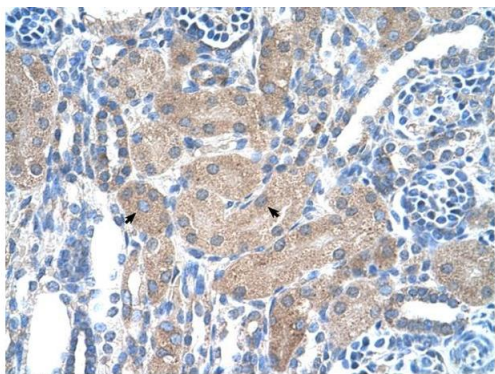
## Handling

|                    |   |
|--------------------|---|
| Format:            | Liquid  |
| Concentration:     | Lot specific  |
| Buffer:            | Liquid. Purified antibody supplied in 1x PBS buffer with 0.09 % (w/v) sodium azide and 2 % sucrose.                                     |
| Preservative:      | Sodium azide  |
| Precaution of Use: | This product contains Sodium azide: a POISONOUS AND HAZARDOUS SUBSTANCE which should be handled by trained staff only.                  |
| Handling Advice:   | Avoid repeated freeze-thaw cycles.  |
| Storage:           | -20 °C  |
| Storage Comment:   | For short term use, store at 2-8°C up to 1 week. For long term storage, store at -20°C in small aliquots to prevent freeze-thaw cycles. |



### Western Blotting

**Image 1.** WB Suggested Anti-SLA Antibody Titration: 0.2-1 ug/ml ELISA Titer: 1:312500 Positive Control: Jurkat cell lysate



### Immunohistochemistry

**Image 2.** Rabbit Anti-SLA/LP Antibody Paraffin Embedded Tissue: Human Kidney Cellular Data: Epithelial cells of renal tubule Antibody Concentration: 4.0-8.0 ug/ml Magnification: 400X