

Datasheet for ABIN2776663
anti-EIF4E3 antibody (Middle Region)[Go to Product page](#)

2 Images

1 Publication

Overview

Quantity:	100 µL
Target:	EIF4E3
Binding Specificity:	Middle Region
Reactivity:	Human, Mouse, Rat, Cow, Dog, Guinea Pig, Horse, Rabbit, Zebrafish (Danio rerio)
Host:	Rabbit
Clonality:	Polyclonal
Conjugate:	This EIF4E3 antibody is un-conjugated
Application:	Western Blotting (WB)

Product Details

Immunogen:	The immunogen is a synthetic peptide directed towards the middle region of human EIF4E3
Sequence:	VQVWNVNASL VGEATVLEKI YELLPHITFK AVFYKPHEEH HAFEGGRGKH
Predicted Reactivity:	Cow: 100%, Dog: 100%, Guinea Pig: 100%, Horse: 100%, Human: 100%, Mouse: 100%, Rabbit: 100%, Rat: 100%, Zebrafish: 100%
Characteristics:	This is a rabbit polyclonal antibody against EIF4E3. It was validated on Western Blot using a cell lysate as a positive control.
Purification:	Affinity Purified

Target Details

Target:	EIF4E3
---------	--------

Target Details

Alternative Name:	EIF4E3 (EIF4E3 Products)
Background:	<p>EIF4E3 belongs to the EIF4E family of translational initiation factors that interact with the 5-prime cap structure of mRNA and recruit mRNA to the ribosome.</p> <p>Alias Symbols: MGC39820, MGC86971</p> <p>Protein Interaction Partner: ELAVL1, DCC,</p> <p>Protein Size: 224</p>
Molecular Weight:	24 kDa
Gene ID:	317649
NCBI Accession:	NM_001134649 , NP_001128123
UniProt:	Q8N5X7

Application Details

Application Notes:	Optimal working dilutions should be determined experimentally by the investigator.
Comment:	Antigen size: 224 AA
Restrictions:	For Research Use only

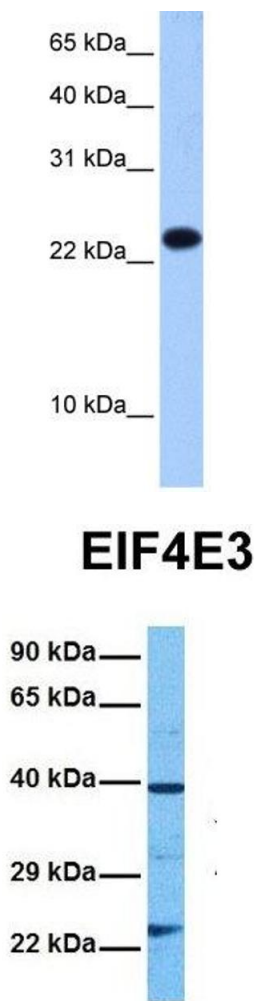
Handling

Format:	Liquid
Concentration:	Lot specific
Buffer:	Liquid. Purified antibody supplied in 1x PBS buffer with 0.09 % (w/v) sodium azide and 2 % sucrose.
Preservative:	Sodium azide
Precaution of Use:	This product contains Sodium azide: a POISONOUS AND HAZARDOUS SUBSTANCE which should be handled by trained staff only.
Handling Advice:	Avoid repeated freeze-thaw cycles.
Storage:	-20 °C
Storage Comment:	For short term use, store at 2-8°C up to 1 week. For long term storage, store at -20°C in small aliquots to prevent freeze-thaw cycles.

Publications

Product cited in: Gerhard, Wagner, Feingold, Shenmen, Grouse, Schuler, Klein, Old, Rasooly, Good, Guyer, Peck, Derge, Lipman, Collins, Jang, Sherry, Feolo, Misquitta, Lee, Rotmistrovsky, Greenhut, Schaefer, Buetow et al.: "The status, quality, and expansion of the NIH full-length cDNA project: the Mammalian Gene Collection (MGC). ..." in: **Genome research**, Vol. 14, Issue 10B, pp. 2121-7, (2004) ([PubMed](#)).

Images



Western Blotting

Image 1. WB Suggested Anti-EIF4E3 Antibody Titration: 0.2-1 ug/ml Positive Control: Human Liver

Western Blotting

Image 2. Host: Rabbit Target Name: EIF4E3 Sample Tissue: Human DLD1 Antibody Dilution: 1.0ug/ml