



Datasheet for ABIN2776665  
**anti-RALYL antibody (C-Term)**



[Go to Product page](#)

1 Image

1 Publication

### Overview

Quantity:	100 µL
Target:	RALYL
Binding Specificity:	C-Term
Reactivity:	Human, Mouse, Cow, Guinea Pig, Pig, Rabbit, Dog, Horse
Host:	Rabbit
Clonality:	Polyclonal
Conjugate:	This RALYL antibody is un-conjugated
Application:	Western Blotting (WB)

### Product Details

Immunogen:	The immunogen is a synthetic peptide directed towards the C terminal region of human RALYL
Sequence:	AQKKQLEESL VLIQEECVSE IADHSTEEPA EGGPDADGEE MTDGIEEDFD
Predicted Reactivity:	Cow: 93%, Dog: 100%, Guinea Pig: 86%, Horse: 93%, Human: 100%, Mouse: 79%, Pig: 100%, Rabbit: 93%
Characteristics:	This is a rabbit polyclonal antibody against RALYL. It was validated on Western Blot using a cell lysate as a positive control.
Purification:	Affinity Purified

### Target Details

Target:	RALYL
---------	-------

## Target Details

---

Alternative Name:	RALYL ( <a href="#">RALYL Products</a> )
Background:	<p>RALYL belongs to the RRM HNRPC family, RALY subfamily. It contains 1 RRM (RNA recognition motif) domain. The functions of RALYL remain unknown.</p> <p>Alias Symbols: HNRPCL3</p> <p>Protein Interaction Partner: RALYL, AEN, RBM41, THAP1, HNRNPC, BYSL, CEP170P1, PSMF1, UBC, TSNAX, LRRK2, SUMO1, VHL, ZNF408, C20orf27, AEBP2, CCDC85B, LMO3, MCRS1, FXR2, EWSR1,</p> <p>Protein Size: 291</p>
Molecular Weight:	32 kDa
Gene ID:	138046
NCBI Accession:	<a href="#">NM_173848</a> , <a href="#">NP_776247</a>
UniProt:	<a href="#">Q86SE5</a>

## Application Details

---

Application Notes:	Optimal working dilutions should be determined experimentally by the investigator.
Comment:	Antigen size: 291 AA
Restrictions:	For Research Use only

## Handling

---

Format:	Liquid
Concentration:	Lot specific
Buffer:	Liquid. Purified antibody supplied in 1x PBS buffer with 0.09 % (w/v) sodium azide and 2 % sucrose.
Preservative:	Sodium azide
Precaution of Use:	This product contains Sodium azide: a POISONOUS AND HAZARDOUS SUBSTANCE which should be handled by trained staff only.
Handling Advice:	Avoid repeated freeze-thaw cycles.
Storage:	-20 °C
Storage Comment:	For short term use, store at 2-8°C up to 1 week. For long term storage, store at -20°C in small aliquots to prevent freeze-thaw cycles.

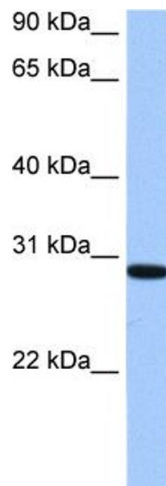
## Publications

---

Product cited in: Takeshita, Ichikawa, Nitta, Goyama, Asai, Ogawa, Chiba, Kurokawa: "AML1-Evi-1 specifically transforms hematopoietic stem cells through fusion of the entire Evi-1 sequence to AML1." in: **Leukemia**, Vol. 22, Issue 6, pp. 1241-9, (2008) ([PubMed](#)).

## Images

---



### Western Blotting

**Image 1.** WB Suggested Anti-RALYL Antibody Titration: 0.2-1 ug/ml Positive Control: HepG2 cell lysate