

Datasheet for ABIN2776668

anti-MRPL21 antibody (Middle Region)[Go to Product page](#)**1** Image

Overview

Quantity:	100 µL
Target:	MRPL21
Binding Specificity:	Middle Region
Reactivity:	Human, Mouse, Rat, Cow, Dog, Guinea Pig, Horse
Host:	Rabbit
Clonality:	Polyclonal
Conjugate:	This MRPL21 antibody is un-conjugated
Application:	Western Blotting (WB)

Product Details

Immunogen:	The immunogen is a synthetic peptide corresponding to a region of Mouse
Sequence:	LPDPVEETRH HAEVVKRVNE LIATGQYGRL FAVVHFASHQ WKVTAEDLIL
Predicted Reactivity:	Cow: 86%, Dog: 93%, Guinea Pig: 93%, Horse: 93%, Human: 100%, Mouse: 93%, Rat: 100%
Characteristics:	This is a rabbit polyclonal antibody against Mrpl21. It was validated on Western Blot.
Purification:	Affinity Purified

Target Details

Target:	MRPL21
Alternative Name:	Mrpl21 (MRPL21 Products)
Background:	The function of this protein remains unknown.

Target Details

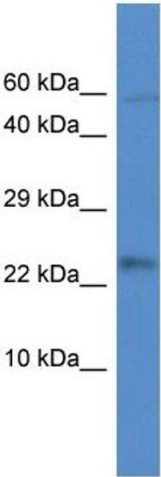
	Alias Symbols: BC028768, MGC41352
	Protein Size: 216
Molecular Weight:	24 kDa
Gene ID:	353242
NCBI Accession:	NM_172252 , NP_758456
UniProt:	A8Y5G2

Application Details

Application Notes:	Optimal working dilutions should be determined experimentally by the investigator.
Comment:	Antigen size: 216 AA
Restrictions:	For Research Use only

Handling

Format:	Liquid
Concentration:	Lot specific
Buffer:	Liquid. Purified antibody supplied in 1x PBS buffer with 0.09 % (w/v) sodium azide and 2 % sucrose.
Preservative:	Sodium azide
Precaution of Use:	This product contains Sodium azide: a POISONOUS AND HAZARDOUS SUBSTANCE which should be handled by trained staff only.
Handling Advice:	Avoid repeated freeze-thaw cycles.
Storage:	-20 °C
Storage Comment:	For short term use, store at 2-8°C up to 1 week. For long term storage, store at -20°C in small aliquots to prevent freeze-thaw cycles.



Western Blotting

Image 1. WB Suggested Anti-Mrpl21 Antibody Titration: 1.0 ug/ml Positive Control: Mouse Liver