

Datasheet for ABIN2776669
anti-CPEB2 antibody (Middle Region)[Go to Product page](#)

2 Images

Overview

Quantity:	100 µL
Target:	CPEB2
Binding Specificity:	Middle Region
Reactivity:	Human, Mouse, Rat, Guinea Pig, Dog, Cow, Horse, Rabbit
Host:	Rabbit
Clonality:	Polyclonal
Conjugate:	This CPEB2 antibody is un-conjugated
Application:	Western Blotting (WB)

Product Details

Immunogen:	The immunogen is a synthetic peptide directed towards the middle region of human CPEB2
Sequence:	SNTLLPLQVR SSLQLPAWGS DSLQDSWCTA AGTSRIDQDR SRMYDSLNMH
Predicted Reactivity:	Cow: 100%, Dog: 100%, Guinea Pig: 100%, Horse: 100%, Human: 100%, Mouse: 100%, Rabbit: 100%, Rat: 100%
Characteristics:	This is a rabbit polyclonal antibody against CPEB2. It was validated on Western Blot using a cell lysate as a positive control.
Purification:	Affinity Purified

Target Details

Target:	CPEB2
---------	-------

Target Details

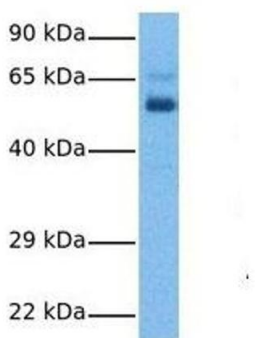
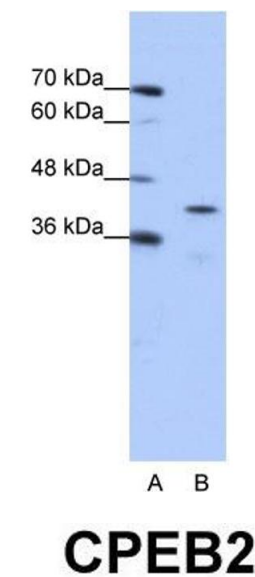
Alternative Name:	CPEB2 (CPEB2 Products)
Background:	<p>CPEB2 is highly similar to cytoplasmic polyadenylation element binding protein (CPEB), an mRNA-binding protein that regulates cytoplasmic polyadenylation of mRNA as a trans factor in oogenesis and spermatogenesis. Studies of the similar gene in mice suggested a possible role of this protein in transcriptionally inactive haploid spermatids.</p> <p>Alias Symbols: CPEB-2, CPE-BP2, hCPEB-2</p> <p>Protein Size: 589</p>
Molecular Weight:	65 kDa
Gene ID:	132864
NCBI Accession:	XM_940329 , XP_945422
UniProt:	Q7Z5Q1

Application Details

Application Notes:	Optimal working dilutions should be determined experimentally by the investigator.
Comment:	Antigen size: 589 AA
Restrictions:	For Research Use only

Handling

Format:	Liquid
Concentration:	Lot specific
Buffer:	Liquid. Purified antibody supplied in 1x PBS buffer with 0.09 % (w/v) sodium azide and 2 % sucrose.
Preservative:	Sodium azide
Precaution of Use:	This product contains Sodium azide: a POISONOUS AND HAZARDOUS SUBSTANCE which should be handled by trained staff only.
Handling Advice:	Avoid repeated freeze-thaw cycles.
Storage:	-20 °C
Storage Comment:	For short term use, store at 2-8°C up to 1 week. For long term storage, store at -20°C in small aliquots to prevent freeze-thaw cycles.



Western Blotting

Image 1. WB Suggested Anti-CPEB2 Antibody Titration: 0.2-1 ug/ml ELISA Titer: 1:312500 Positive Control: Jurkat cell lysate

Western Blotting

Image 2. Host: Rabbit Target Name: CPEB2 Sample Tissue: Human Ovary Tumor Antibody Dilution: 1.0ug/ml